

天津协力国际贸易有限公司

Sinoquest International Trade Ltd.

An Experienced Professional
Comprehensive Outsourcing
Service Company

Your One-Stop China Sourcing Partner

Winson Plaza, A17E, 146 Weidi Road, Tianjin, China 300201

Tel: 86-22-88238523 Fax: 86-22-88238759

Email: sales@sinoquest.cn; sinoquest@china.com

Web: <http://www.sinoquest.cn>

Company General

Founded in 1993

Tianjin Headquarter

Shanghai Office

US Sales Representatives

Japan Sales Representative

We specialize in supplying custom manufactured parts:

Castings, Machined Parts, Screw Machined Parts

Stampings, Forgings

Plastic Molded Parts, Rubber Molded Parts

PCBs, Magnets, Assemblies, etc.

Company History

Sinoquest has been endeavoring with sourcing and supplying various parts from carefully selected China quality factories for US and European OEM companies since 1989, and accumulated professional technical and quality experiences and skills for over 20 years.

What We Do

We accept samples, drawings, specifications and any concepts available to design and manufacture.

Our engineers immediately analyze the given specifications and select the best capable and suitable factory from factories all over China.

We offer the best prices, sample lead time and production lead time, along with necessary documentations such as PPAP: Flow Chart, Control Plan, FMEA at your request.

During production, our engineers conduct on site quality control at every process point start from incoming materials per ISO9001 standard. And apply necessary Cpk control on critical dimensions when needed.

We deliver products via ocean, air, and express shipping method to your nearest port, and can deliver right to your receiving dock at your request.

When necessary, our local agents in your country can solve problems on site in time if there are any urgent issues.

Products

Sinoquest supplies various types of products



Sinoquest——天津协力国际贸易有限公司

Castings

We have been supplying parts of cast iron, cast steel, malleable iron casting, centrifugal casting, investment castings, non-ferrous metal castings.



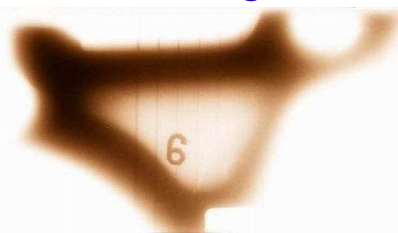
Aluminum
castings



Iron
castings



Investment
castings



X-Ray Analysis



Plastics and Rubber Molding

We supply various sized and high-precision plastic injection molded, blow molded and extruded plastic parts.



Injection Molding Parts



Electric Applications



Plastic and Rubber



Speaker Housing

Stampings

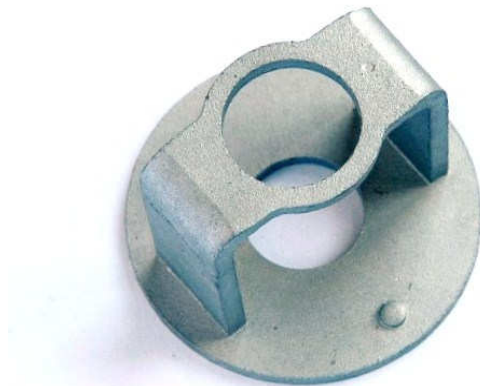
Including cold forming, shaping, drawn, and deep drawn parts.
Materials are steel, brass, copper, aluminum, etc.



Deep
drawn

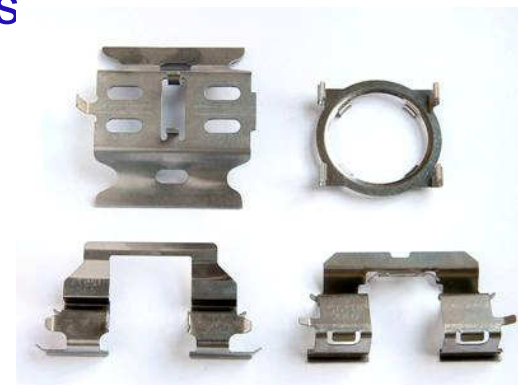


Laminations



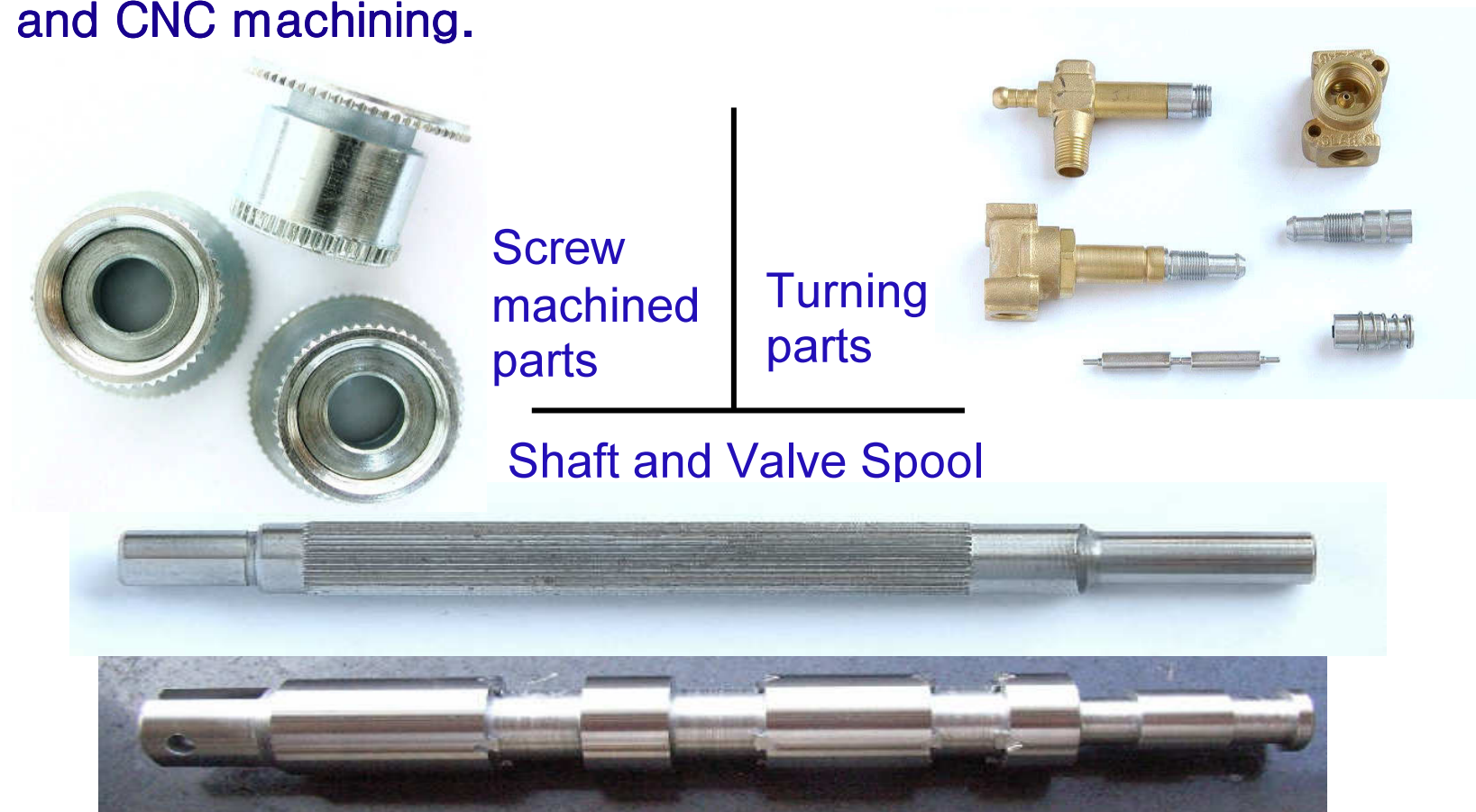
Fine
Blanking

Pad
Clips



Machinings

We supply various machined parts from stocks and cast blanks. Including various sized turning, milling, grinding, screw machining and CNC machining.



Assemblies



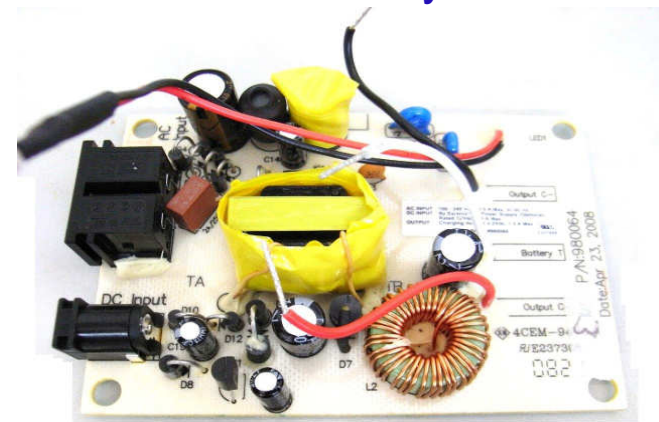
Speaker Assembly

Guide Plunger Assembly



Clamp Assembly

PCB Assembly

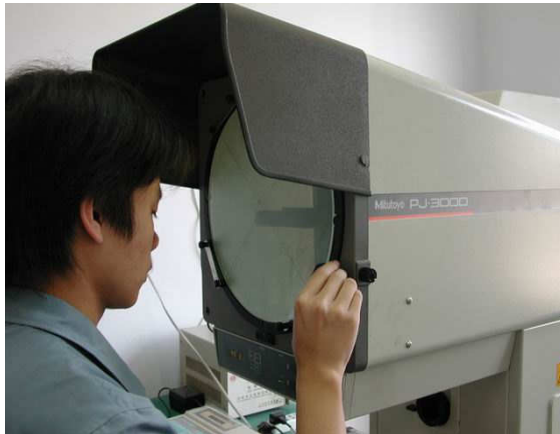


Main Customers

- **Motorola/CTS Wireless**
- **Danaher Motion**
- **Koll Morgan**
- **Elwood**
- **Soloflex**
- **Kurz-Kasch Inc.**
- **Premier Manufacturing**
- **Peerless Industries Inc.**
- **Domino Printing Sciences PLC UK**
- **Dynex Semiconductor Ltd UK**
- **Mitsubishi Components**

Quality Control

- Sinoquest has many years of experiences in quality control for various customers, including automotive industry.
- With years of experiences of ISO9001 and QS9000/TS16949 quality management.
- Capable of PPAP, SPC quality control.

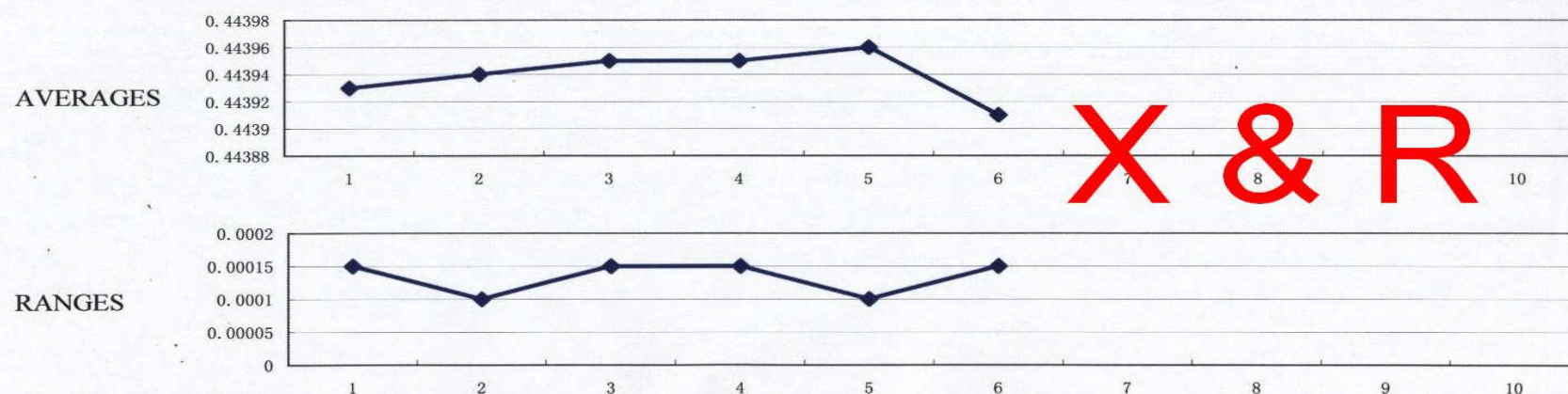


Statistic Process Control

VARIABLES CONTROL CHART (X&R)
STATISTICAL PROCESS CONTROL (CP&CPK) Cpk 生产在线控制表

VENDER 供货单位:	SinoTECH/NB		P/N部件号	544-004-4	尺寸上限 Upper Limit		0.4442	INSPECTOR 检验员:	
CUSTOMER 用户:	FASCO		被测尺寸 Dim	DIA0.4437	尺寸下限 Lower Limit		0.4437	DATE 日期	
Range R 变动范围	0.0001	Average X 平均值	0.44394	Sigma σ 标准差	0.00006	CP	1.5212	CPK	1.4346
DATE 取样日期	11-05-2002	11-05-2002	11-06-2002	11-06-2002	11-07-2002	11-07-2002			
TIME 取样时间	08:20	14:20	08:40	14:40	07:30	13:30			
样件测量结果 SAMPLE MEASUREMTS	1	0.4439	0.4439	0.4439	0.4440	0.4439	0.4440		
	2	0.4440	0.4440	0.4440	0.4440	0.4440	0.4439		
	3	0.4440	0.4439	0.4440	0.4439	0.4440	0.4439		
	4	0.4439	0.4439	0.4439	0.4439	0.4439	0.4439		
	5	0.4439	0.4440	0.4440	0.4440	0.4440	0.4439		
Sigma σ : 方差		0.00006	0.00005	0.00006	0.00006	0.00005	0.00005		
Average X 平均值		0.44393	0.44394	0.44395	0.44395	0.44396	0.44391		
Range R 变动范围		0.00015	1E-04	0.00015	0.00015	1E-04	0.00015		
CP		1.3889	1.7010	1.3176	1.3176	1.7010	1.7010		
CPK		1.2778	1.6330	1.3176	1.3176	1.6330	1.4289		

CP &
Cpk



Control Plan

The Control Plan prepared as the basics of quality control

CONTROL PLAN 控制计划

☒ Prototype
 ☐ Pre-launch
 ☒ Production

Control Plan Number		Key Contact/Phone		Date (Orig.) 2008-3-10		Date (Rev.)	
		Qin Zaiyun 021-32120359				Rev1	
Part Number/Latest Change Level		Core Team		Customer Engineering Approval/Date (If Req'd.)			
3E+06 02版		Qin Zaiyun, Wang Xiaobo 021-32120359					
Part Name/Description		Supplier/Plant Approval/Date		Customer Quality Approval/Date (If Req'd.)			
Supplier/Plant		Supplier Code		Other Approval/Date (If Req'd.)		Other Approval/Date (If Req'd.)	
Sinoquest Ltd/Ningbo Chibo Precise Shafts Manufacturing Factory							

PART/ PROCESS NUMBER	PROCESS NAME OPERATION	MACHINE, DEVICE, JIG, TOOLS, FOR MFG.	CHARACTERISTICS			SPECIAL CHAR. CLASS	METHODS				REACTION PLAN	
			NO.	PRODUCT	PROCESS		PRODUCT/PROCESS SPECIFICATION/ TOLERANCE	EVALUATION/ MEASUREMENT TECHNIQUE	SAMPLE			CONTROL METHOD
	DESCRIPTION								SIZE	FREQ.		
1	Purchasing bar stock 采购棒料		1	Physico-chemical analysis 理化分析			Conform with GB3077-88 符合GB3077-88	Metallographic analysis 金相分析	1	Per lot 每批	Report of analysis 分析报告	Reject 退货
							Physico-chemical index requirement 理化指标要求		1	Per lot 每批	Report of analysis 分析报告	Reject 退货
			2	OD 外径			No damage on surface 表面烂丝,裂丝	Magnifier 放大镜	1	Per lot 每批	Report of analysis 分析报告	Reject 退货
2	Blanking 下料	stamp machine 冲床	1	Length 长度			17.38+2/+1.5	Vernier caliper 游标卡尺	3	5 times/h 5次/1h	Record of inspection 检查记录	Scrap 报废
3	Pre- grinding 粗磨	Centerless grinder 无心磨	1	OD 外径			6.05 +/-0.005	OD micrometer 外径千分尺	3	5 times/h 5次/1h	Record of inspection 检查记录	Quarantine/wait for arrangement 隔离/待调
4	Surface grinding overall length 平磨总长	Surface grinder 大平磨	1	Length 长度			17.38 +/-0.05	Micrometer 千分尺	5	1次/每盘	Record of inspection 检查记录	Quarantine/wait for arrangement 隔离/待调

Problem Solving, Corrective Action

Problem Solving, CAR

Corrective Action Report:

Discipline Report:

A standard format of corrective action documentation to be issued timely while an error occurring.

SIEMENS VDO		8D Report		28.May.2002	
Project		Failure Category		Resp. Q-Planer	
Problem title		8D-Report number	Date of beginning:		
		<input type="checkbox"/> opened <input type="checkbox"/> closed	Update:		
1. Team	Phone	2. Problem description - product name: Failure Category - failure description: - date of first detection:			
3. Short-term containment actions		Who	Implementation Date	Efficiency	
4. Define and verify root causes		Who	When	Contribution	
5. Select permanent corrective actions		Who	When	Efficiency	
6. Implement permanent corrective actions <input type="checkbox"/> FME(C)A up-dated <input type="checkbox"/> Product technical documentation up-dated		Who	Implementation Date	Efficiency	
7. Actions to prevent problem recurrence		Who	Implementation Date		
8. Problem solved Signatures of team members		Date:			
Other Documents Analysis sheet (is / is not method): <input type="checkbox"/> Others:					

Page 1 of 1 Copyright © by Siemens VDO Automotive AG

Sinoquest——天津协力国际贸易有限公司

Location

Sinoquest headquarter is located in Tianjin, a port city 75 miles southeast of Beijing, the 3rd largest industrial and trading city of China. World big companies such as Motorola, Schneider, American Standard, Toyota, Yamaha, Samsung, LG, Airbus, etc. have their manufacturing facilities in Tianjin.

Sinoquest has office in Shanghai to closely cover the activities with the factories in Shanghai/Ningbo area.

