



GLOBALMOLDE

HUMAN POWERED
mould&plastics solutions

GLOBALMOLDE

ABOUT US

- Specialized in design and manufacture of moulds for the plastics industry
- Based in Marinha Grande, Portugal - worldwide recognized mould making excellence centre
- Started as a commercial department of a regular mouldmaking company
- Established as an independent company since 1996 - 14 years ago
- Awarded with ISO 9001:2000 certification since 2005



OUR OFFER

- MOULDS FOR THE PLASTICS INDUSTRY
- INTEGRATED SERVICES
 - product development
 - production and final assemblage



OUR COMPETENCIES

WAS BRAUCHEN SIE? WHAT DO YOU NEED?	UNSER ANGEBOT WE OFFER YOU				
	Idee idea	F&E i+d	Formen moulds	Kunststoffteile plastics	Montage assembling
Nur Formen? just moulds?	●	●	●	●	●
Kunststoffteile? plastics?	●	●	●	●	●
Montiertes Endprojekt? final assembled project?	●	●	●	●	●
Einen integrierten Service? an integrated service?	●	●	●	●	●

In resume:

We are a company specialized in moulds and plastics, able to offer an integrated service for plastic based products

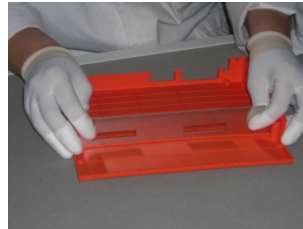
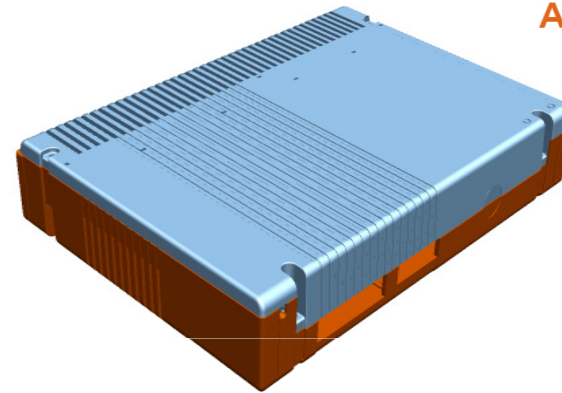
Following we will present some examples of 14 years of success cooperation's...

GLOBALMOLDE

ELECTRIC/ELECTRONIC

TELVENT

ABENGOA



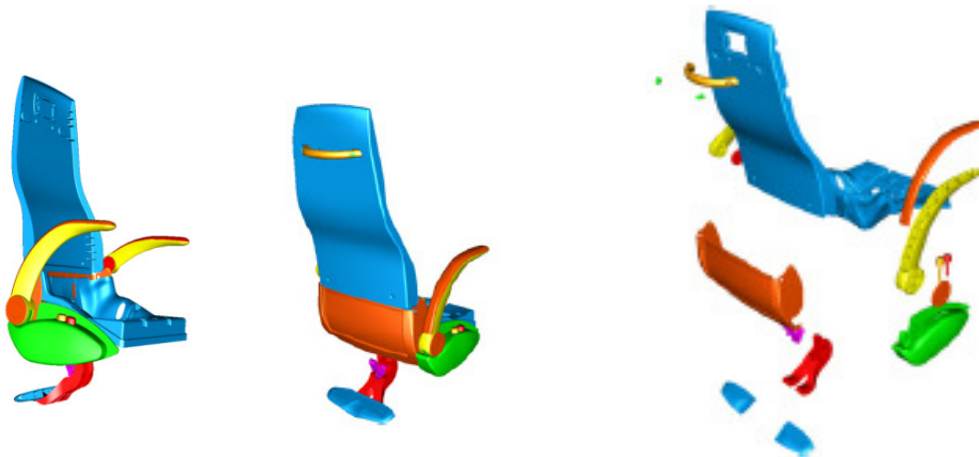
ELECTRONIC INPUT/OUTPUT BOX

GLOBALMOLDE's input:

Research and product development/ mould design and manufacturing/ production of plastic parts/ incorporation of metal parts (laser cut aluminium, cut and adapted steel plate, special screws etc)/ quality control, final assembly and packaging/ logistics

GLOBALMOLDE

AUTOMOTIVE



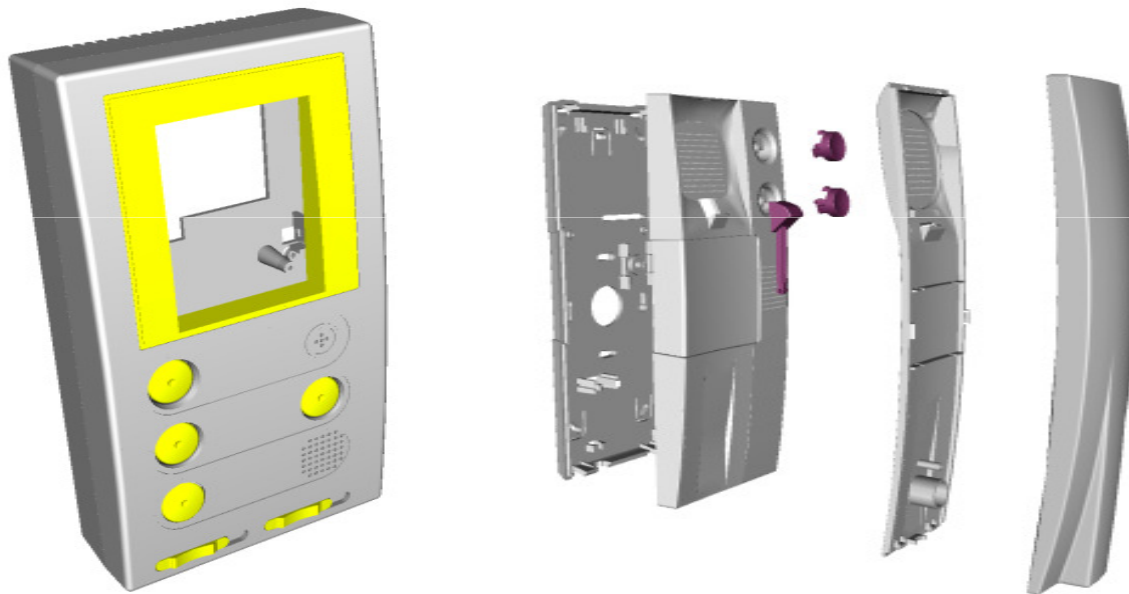
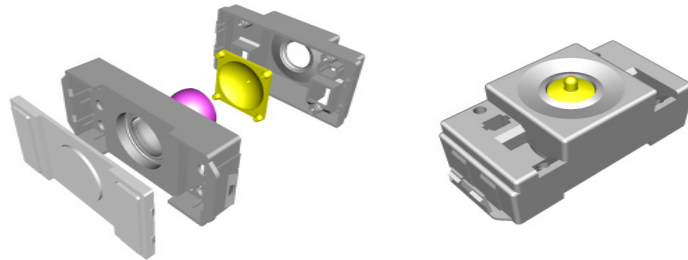
AUTOBUS SEAT – project ROUTER

38 tools

GLOBALMOLDE's input: cooperation in product development/ design and manufacture in a short delivery time/ pre-series production

GLOBALMOLDE

ELECTRIC/ELECTRONIC



GUINAZ



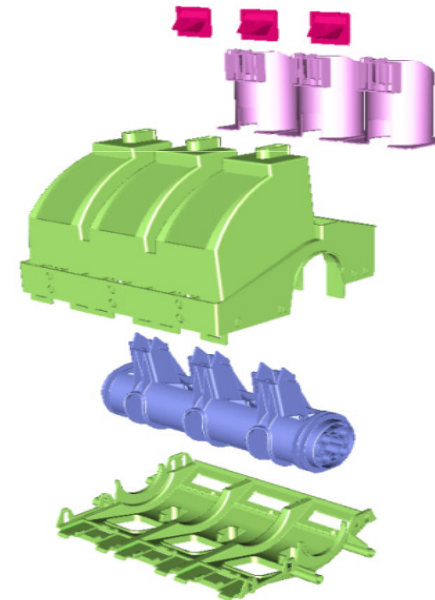
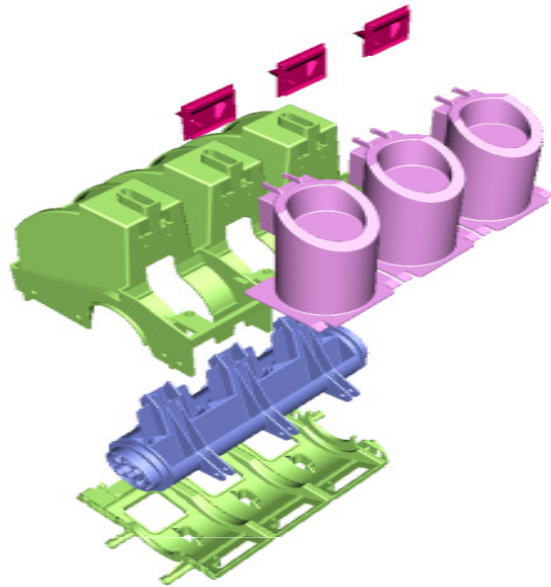
VIDEO SURVEILLANCE SYSTEM

GLOBALMOLDE's input:

cooperation in product development/ large production mould design and manufacture/ pre-series production

GLOBALMOLDE

ELECTRIC/ELECTRONIC



MEDIUM VOLTAGE SWITCH GEAR

GLOBALMOLDE input:

cooperation in product development/ mould design and manufacturing/ pre-series production



GLOBALMOLDE

SOUND SUPERVISOR

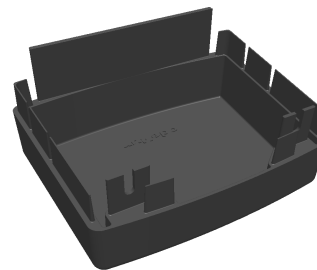
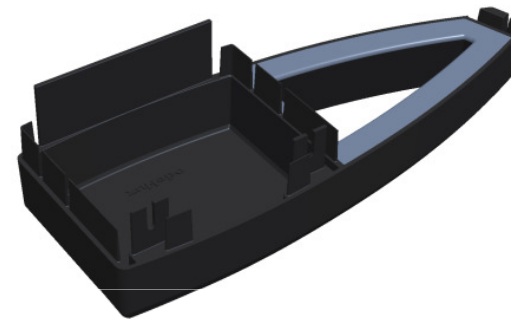


SYSTEM FOR NOISE SUPERVISION

GLOBALMOLDE's input : Research material/ Mould project & construction/ pre-series/ quality control

GLOBALMOLDE

ILLUMINATION

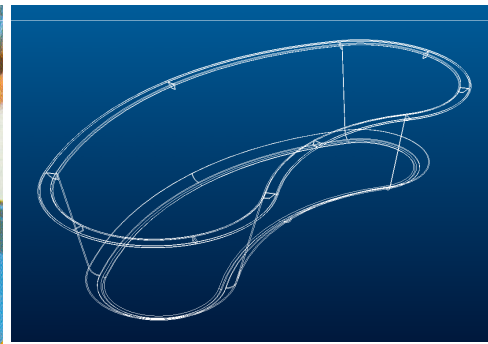
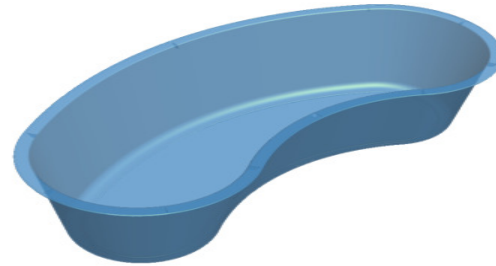


INDOOR LIGHTING SYSTEM

GLOBALMOLDE's added value: cooperation in product design/ conception and development of aluminium prototype mould, using interchangeable inserts, in order to produce 9 different versions in the same mould/ plastic parts injection

GLOBALMOLDE

PHARMA/MEDICAL/HOSPITAL



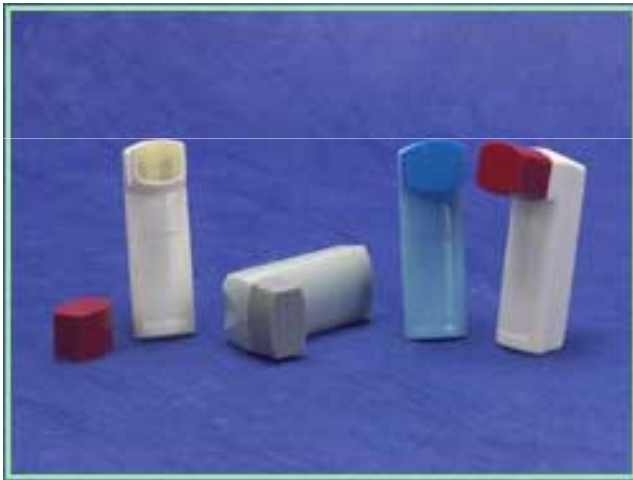
HOSPITAL SETS range of disposable non-reusable products

GLOBALMOLDE's added value: Research and product development - Thin wall plastic parts research/development till optimized wall thickness below 0.5mm / mould design and manufacture/ production of plastic parts/ quality control and packaging/ logistics and distribution

GLOBALMOLDE

MEDICAL INDUSTRY

INHALERS

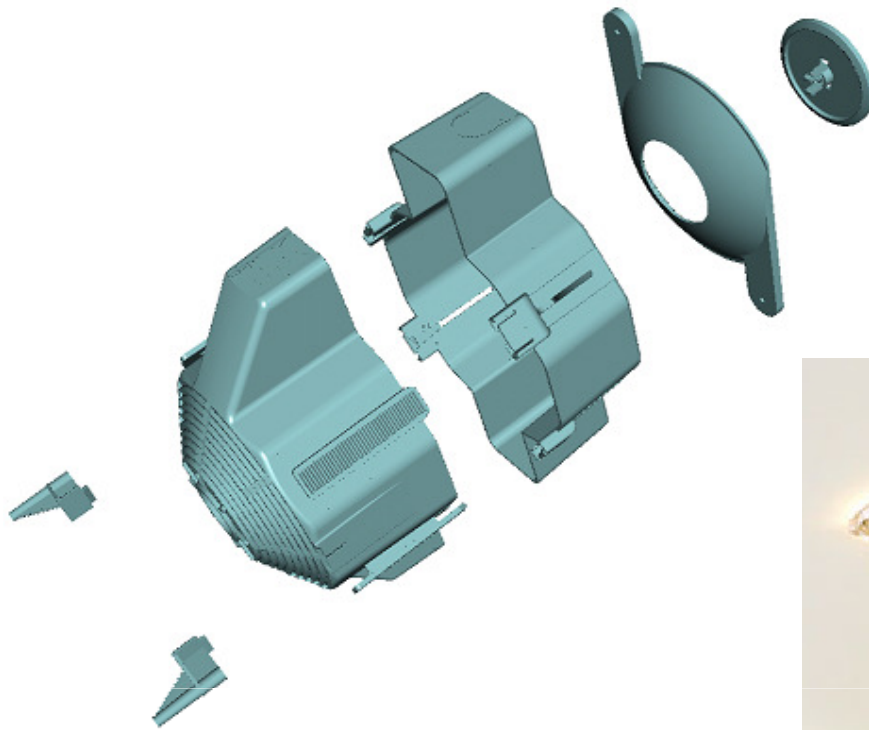


GLOBALMOLDE's added value:
Optimization of the internal spray
dispenser

WASTE CONTAINERS



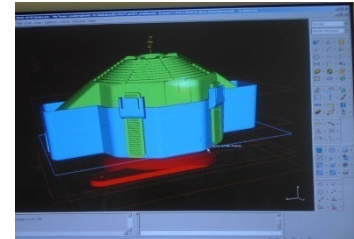
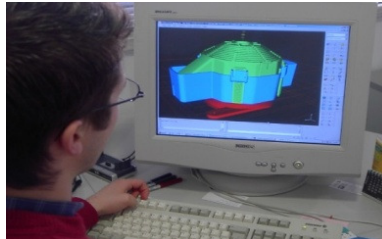
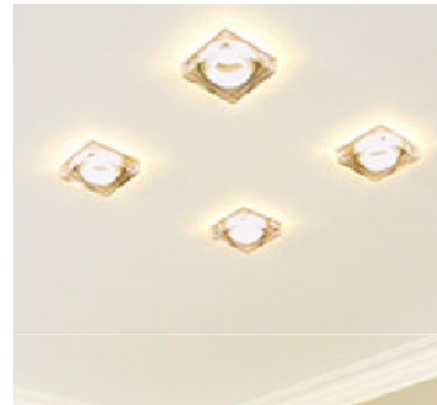
Globalmolde's added value:
product development/ design



GLOBALMOLDE

ILLUMINATION

inno



CEILING PROJECTOR FIXING SYSTEM

GLOBALMOLDE's added value: research and product development/ mould design and manufacture/ production of plastic parts/ quality control, packaging and assemblage/ logistics

GLOBALMOLDE

HOUSE WARE

REFRIGERATORS



SIEMENS



GLOBALMOLDE's added value: cooperation in product development/ large production mould design and manufacture/ pre-series production

GLOBALMOLDE

HOUSEWARE

WASHING MACHINES



CONTROL PANELS

GLOBALMOLDE's input: cooperation in product development/ design and manufacture of moulds for producing different versions per mould, using interchangeable inserts/ pre-series production



B/S/H/

GLOBALMOLDE

HOUSE WARE



SIEMENS



STEAM IRON

Globalmolde's input:

cooperation in product development/ large production moulds design and manufacture/ pre-series production

GLOBALMOLDE

AUTOMOTIVE

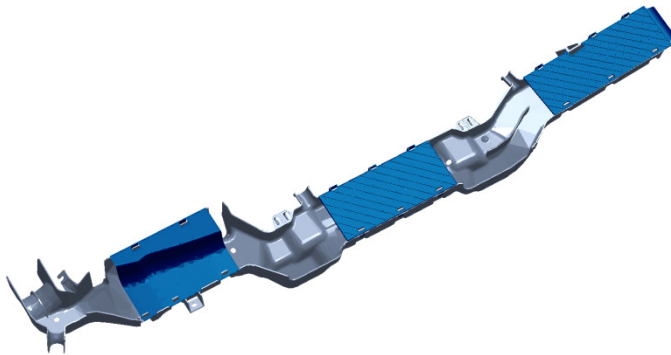
Lighting

GLOBALMOLDE's added value: cooperation in product development/
large production moulds design and manufacture/ pre-series
production



Cable Channel

GLOBALMOLDE's added value: cooperation and project management / manufacturing
mould

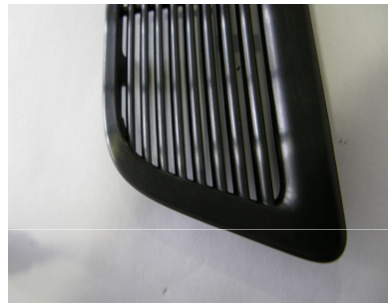


GLOBALMOLDE

AUTOMOTIVE

Interior

GLOBALMOLDE's added value: cooperation in product development/ large production moulds design and manufacture/ pre-series production



Exterior

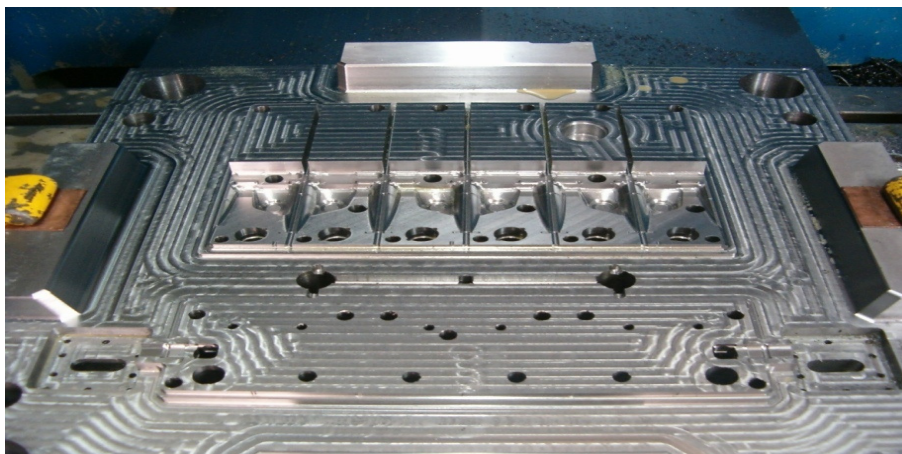
GLOBALMOLDE's added value: cooperation and project management / manufacturing mould



GLOBALMOLDE

AUTOMOTIVE

alRowad



AUTO BATTERY

GLOBALMOLDE's input:

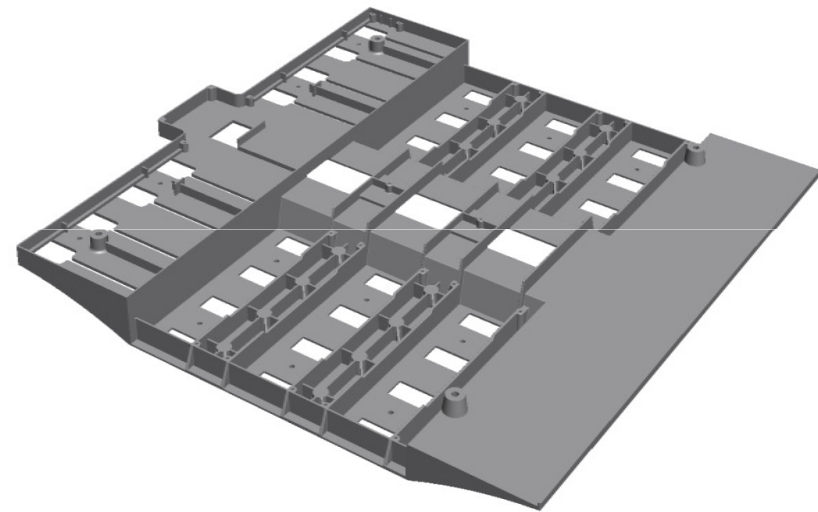
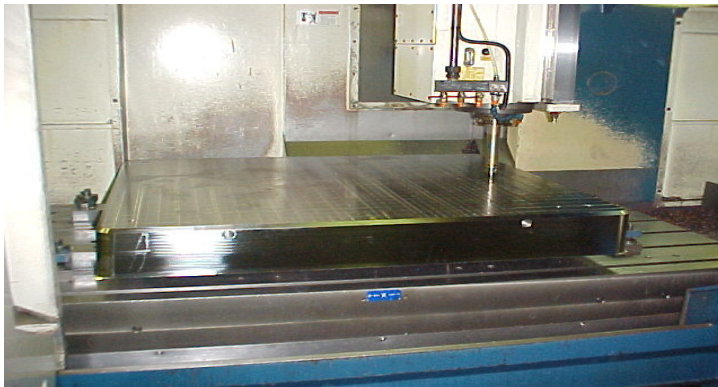
cooperation in product development/ large production moulds design and manufacture/ pre-series production

GLOBALMOLDE

ELECTRIC/ELECTRONIC



GRUPO ORMAZABAL



ELECTRICAL CABINET (compression tool)

SMC material

GLOBALMOLDE's input:

cooperation in product development/ mould design and manufacturing

GLOBALMOLDE

BUILDING INDUSTRY
Pool Filter

ASTRAL



GLOBALMOLDE's added value: cooperation in product development/ design and manufacture



GLOBALMOLDE

OFFICE FURNITURE INDUSTRY



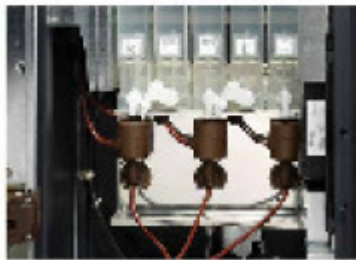
AKABA

Globalmolde's added value:
Cooperation in product development/
moulds design and manufacture



GLOBALMOLD

ALIMENTARY



FOOD POWDER CONTAINER

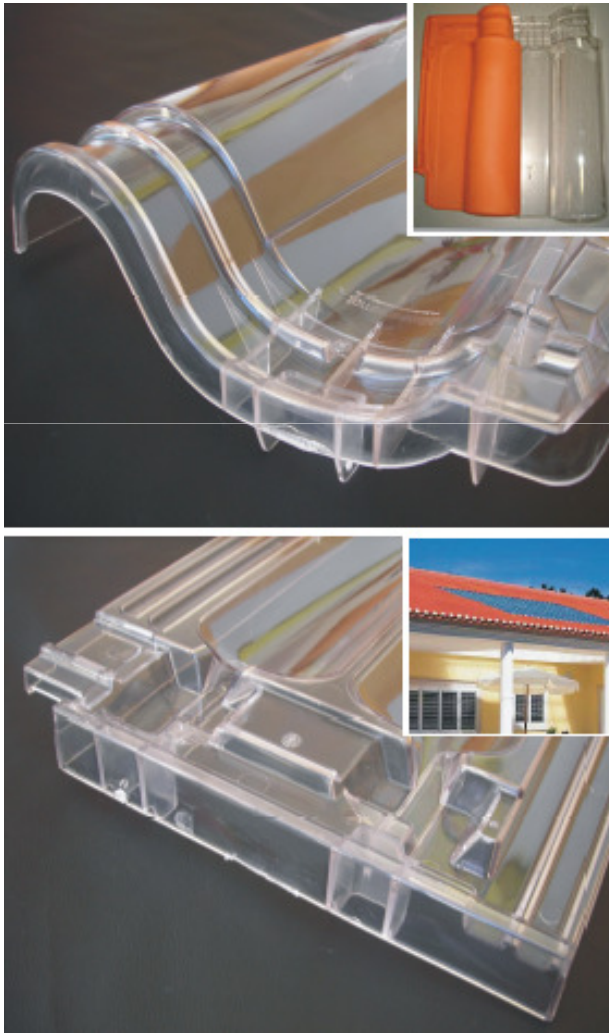
GLOBALMOLDE's input:

Cooperation in product development/ moulds design and manufacture/ production of plastic parts/ quality control and packaging/ logistics

GLOBALMOLDE

BUILDING INDUSTRY

PC roof tiles, substitute to glass roof tiles



POLICARBONATE ROOF TILES

GLOBALMOLDE input: Research and product development/
mould design and manufacture/ production of plastic parts/
quality control and packaging/ logistics

GLOBALMOLDE

Our customers are our best advertisement
but there is only one way for evaluating how reliable we are...
...work together!
We are looking for that opportunity.

Thank you for your time

GLOBALMOLDE
Zona Industrial Moita, 11H
2430 MARINHA GRANDE

Tel +351 244 555 030
Fax +351 244 541 215
www.globalmolde.com

Ana.paula@globalmolde.pt
Ana Paula Silva
Commercial Manager

