
GLOBALMOLDE

a **SGS** company

Historical Overview



COMPANY PROFILE

GLOBALMOLDE SHORT HISTORY

GLOBALMOLDE started in a commercial department of a regular mould maker, with more than 25 years.

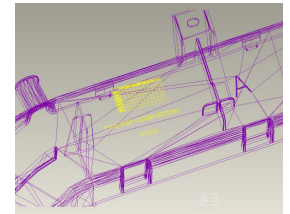
12 years ago, was decided to create GLOBALMOLDE as an independent company, and the founders was some commercial and technical people, and also, the mother company. The strategy was to expand the capacity of managing projects with large dimensions, namely, those that involves a significant quantity of different moulds and plastic parts.

Based on a central engineering dept, and in specialized technicians working together with the mother plant, GLOBALMOLDE offers a capacity higher than usual and the ability of managing large quantity of moulds at the same time, assuring high levels of quality, achieving the better prices and very short times of delivery.

In 2001 GLOBALMOLDE was integrated in SSGS GROUP OF COMPANIES and a new impulse was given to our strategy.

In 2002 GLOBALMOLDE moves into a new building with better facilities and area

Since 2004 we work in a TURN KEY SERVICE philosophy, making use of all our skills and offer a complete service to the costumer.



GLOBALMOLDE VISION

From product design... to series production, assemblage and logistics... ..we offer you a TURN KEY SERVICE....

GLOBALMOLDE began as a traditional mould maker, but nowadays, market needs a new approach, exigency is higher and demands optimal solutions

We realised that, and prepared ourselves to offer a different service, larger and embracing, using our skills to solve costumer's needs, and concentrate actions in one company, assuming all the responsibility and avoiding problems.

Our experience assures our commitment, and our customers can tell how trustable we are



GLOBALMOLDE PHILOSOPHY

GLOBALMOLDE is not only a tool making company.
A regular toolmaker is a company able to assure all mould making manufacture process inside house.
So, a regular toolmaker is limited by their capacity, in terms of dimensions, specifications and in terms of number of tools.
By other way, they can only supply moulds.

... WORKING TOGHETER / THE BEST RESULTS

The moulds business for us is not a real and independent business; it makes part of a bigger business which is PLASTICS.
PLASTICS business starts on the idea of a new product, the design and development of the new product until achieving the final parts to be moulded; in that point a regular mould maker starts his job.

GLOBALMOLDE starts earlier; as mould makers, we have lots of years of experience, and we know that is very important to develop the product to achieve the best moulding conditions, the fastest cycle times and, optimal prices for tools.

This cooperation between our designers (with mould making experience) and the customer designers (with costumer product experience) or with injection companies (with injection experience) will be always an added value, saving lots of money and time.

... ACT BEFORE THE PROBLEM

During mould making process, a regular mould maker only be able to produce moulds with sizes that can be manufactured in their machines, and, in quantities possible to produce at the same time, so, if costumer product has more moulds than the regular mould maker is able to produce ate the same time, they need to be separated in two or three companies.

GLOBALMOLDE also solved this problem; with our skills as mould makers we know exactly the problems that can occur during production, and all the critical areas.

In a central engineering dep., we develop all parts, all designs are made, all critical areas identified, all CAD CAM programs are made, all electrodes and other machining programs are prepared and all production time is calculated.

After that, using our associated companies (mainly) or other certified suppliers around us, we manage all production of all tools at the same time, allowing us to supply samples at the same time, and with a quality assured by our central engineering development.

The knowledge about Marinha Grande companies, allow us to identify the specialized company for each tool, and our Quality Management System force us to a very accurate Supplier Certification Program.

...COMMITMENT TO QUALITY

After producing the moulds, a regular toolmaker finish is job; of course, they are responsible for maintenance and warranty, but



no more than this.

GLOBALMOLDE is also different; we understand costumers problem with the relation between mould makers and plastic moulders – if anything is not OK is very difficult to define the responsibility, can be an injection problem, or can be a mould problem – costumer only needs his product in the right quality.

Assuming the responsibility of supplying final plastic parts to the costumer or working in cooperation with the injection company, GLOBALMOLDE act to solve all eventual problems between moulds and injection, guaranteeing the final quality.

Packaging and logistics is a complement of all this process and closes the range of services around PLASTICS business.

... PEOPLE WITH COSTUMER FOCUS

We believe in people, and we believe that a good team is the base of a good company.

Very well trained people, based on theory learned from schools, and working directly with people with lots of years of experience that teach them all secrets and details of mould making manufacture, assures the exchange of knowledge, and the maintenance of Portuguese mould making quality.

We are proud of joining together with success the most high technology, with the knowledge of lots of years of hand working. With continuous motivation and training programs, we offer a qualified and motivated team, assuring that you can always count on us.

At GLOBALMOLDE people work as a real TEAM, knowing very well that:

Together **wE** **A**chieve **M**ore

So, we are not just a mould maker

We assume costumers business as a part of our own business

Our way of work is based in commitment and cooperation.

We are not a big company, but we are a trustable company, knowing is way and following a strategy, believing that with knowledge, creativity, imagination and hard work is possible to achieve targets, no matter how far they seem to be.



GLOBALMOLDE CORE COMPETENCES

Product development

Product design or cooperation with your designers, putting our skills as mould makers, to find the best solutions to produce your product, achieving better prices, fast deliveries and improving quality.

Moulds design and production

design and manufacture of moulds, with the capacity of handling with large quantities of moulds at the same time, assuring short and guaranteed delivery time and the best quality, based on 50 years of mould making industry in Marinha Grande – Portugal

Quality

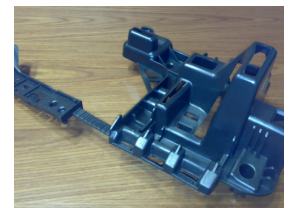
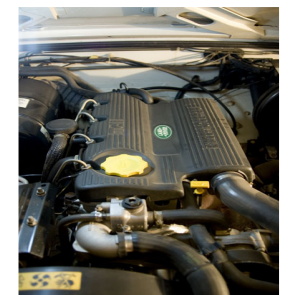
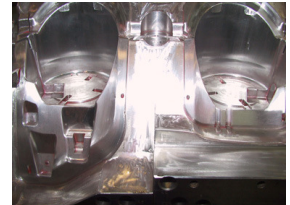
We are a CERTIFIED COMPANY for production of plastic parts and moulds, under NP EN ISO 9001:2000

Production and assembling

final production of plastic parts, and assemblage of final product

Logistic management

We can handle with all the transportation matters, since package to the delivery directly to your costumers, in any place in the world



GLOBALMOLDE FIGURES

FACILITIES

Office plant: 500m2

Qualified toolmakers: 1 associated companies (37 employees)

Project engineers: GlobalMolde: 4 - Associated companies: 4/4

Costumer support: 5

Design and CAD capabilities:

- Software: UNIGRAPHICS / SOLID WORKS / AUTOCAD / CIMATRON / PRO-ENG.

Quality certification: ISO9001:2000

GLOBALMOLDE QUALITY POLICY

In order to assure the quality and guaranteeing the costumer total satisfaction, our Quality Management System is certified for production of plastic parts and moulds, under NP EN ISO 9001:2000,

QUALITY POLICY

COSTUMER TOTAL SATISFACTION



Assuring all the needs of the costumers, in a continuous way, acting actively and in cooperation, advancing problems and solutions, giving to the costumers confidence and commitment in achieving the best results

INNOVATION

Act with creativity to solve costumers problems, with new technologies, procedures and attitude, in order to achieve a high performance, finding optimised solutions and procedures

PARTNERSHIP

Establish and maintain solid and strong partnerships, with customers and suppliers, with the best relations and cooperation, in order to obtain the best results

RIGOUR

Assure rigour in accomplishment of our quality management system, in order to guaranteeing the supplying quality products and services, in a systematic way

EMBRACEMENT

Improve work conditions allowing and motivate the human and professional growth, generating team spirit and cooperation, assuring the embracement of all around the targets

GLOBAL MOLDE LEAD TIMES

Lead times depends on the complexion of the tools, but we can assure, usually, very short lead times

We are based in Marinha Grande, a town with almost 250 companies working in moulds; this reality offer us facilities in all the manufacture process of moulds and allow us to offer our own capacity, and the capacity of other companies around us.

With a very accurate and safe subcontract management system, we are able to assure the quality and accuracy of lead times, and also, the possibility of handling with large quantity of tools at the same time, and with the same time of delivery (this is quite impossible in a regular toolmaker)



GLOBALMOLDE PROJECT MANAGEMENT

For each project, a project responsible will be defined

The project management will follow some steps:

- Responsible project engineer definition (this project leader is the responsible for all project since the beginning; in certain areas, as moulds manufacture and plastic production, technical people will join to discuss technical details with Tec. Dept. of costumer)
- commercial briefing and guide lines
- technical briefing and guide lines
- Production
- Production control
- Quality control
- Information management
- Costumer management

Referring to Information Management,

All project process is controlled and all information registered and filled.

We are able to send to costumer all the required information with the required frequency; anyway, for tools production, usually the information sent is as follows:

- Before production:
 - o preliminary mould project
 - o final drawings of mould
- During production (every 2 weeks)
 - o Progress report
 - o Fotos
 - o Vídeos
- During 1st sampling
 - o Samples of plastic part
 - o Dimensional report
 - o Quality report
 - o Actions plan
- After 1st sampling (every test)
 - o Samples
 - o Dimensional report
 - o Quality report
 - o Actions plan
 - o Report of modifications done
 - o Report of corrections done
- After final approval
 - o Set of final samples for costumer

certification

INFORMATION

All details related with design, development and manufacture of tools, as well as all exchanged information, technical details and technical data will be safely filed with us and remain available for any consultation



With tolls you will receive all technical details: mould drawings (including detailed drawings for inserts, cams etc), refrigeration circuits, hydraulic circuits, electric circuits, connections and security system, safety instructions, working instructions and maintenance manual.

Also you will receive, steels quality certificates, as well as, all technical information related to heat treatments, surface treatments Tc, with related quality certificates, and a set of final samples



GLOBALMOLDE HOLDING GROUP

GLOBALMOLDE is member of SSGS GROUP

SSGS is a group of companies operating in the following fields:

- Moulds and plastics
- Tourism
- Textile
- Consulting

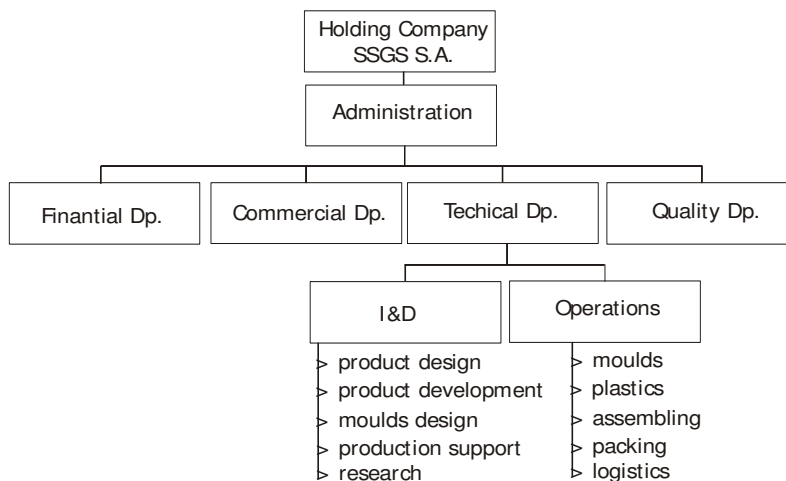
GLOBALMOLDE makes part of moulds and plastics division

GLOBALMOLDE is an SSGS COMPANY since 2001

More information can be found at: www.ssgs.sa.com



GLOBALMOLDE STRUCTURE



GLOBALMOLDE MARKETS

GLOBALMOLDE acts in different markets, with a defined strategy and a partnership bases.

In this moment, GLOBALMOLDE main markets are:

UK: 40%

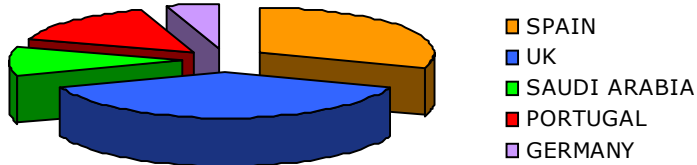
Spain: 30%

Saudi Arabia: 10%

Portugal: 15%

Germany: 5%

MARKETS

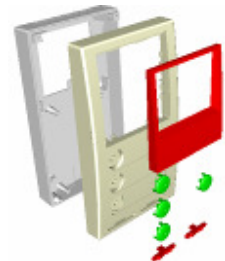
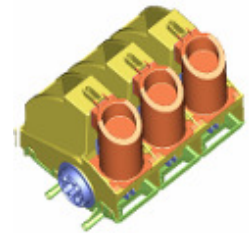


As futures targets:

- increase Saudi Arabian markets, as well as all Middle East markets
- north Europe markets
- Brazil market

EXPORTS

90% export: Spain / UK / Germany/ Saudi Arabia



OBALMOLDE ADRESS AND CONTACTS

ADRESS

Zona Industrial Moita 11H
PO BOX 177
2430 MARINHA GRANDE
PORTUGAL

Nearest Airport : LISBON AIRPORT (+- 1 hour by car)
Lisbon > Motorway A8 > Marinha Grande Industrial Area

CONTACTS

Telef. +351 244 555 030
Fax: +351 244 541 215
www.globalmolde.com
global@globalmolde.pt

General Manager: Antonio Santos
(asantos@globalmolde.pt)
Comercial Manager: Ana Paula Silva
(Ana.paula@globalmolde.pt)
Technical Manager: Adriano Luis (adrluis@globalmolde.pt)

