

SMART *line*

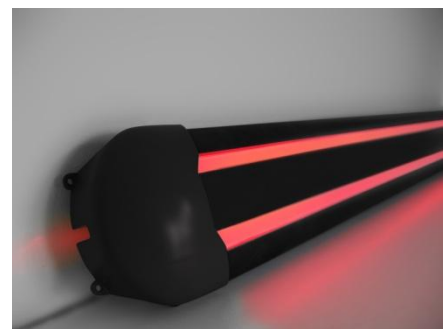
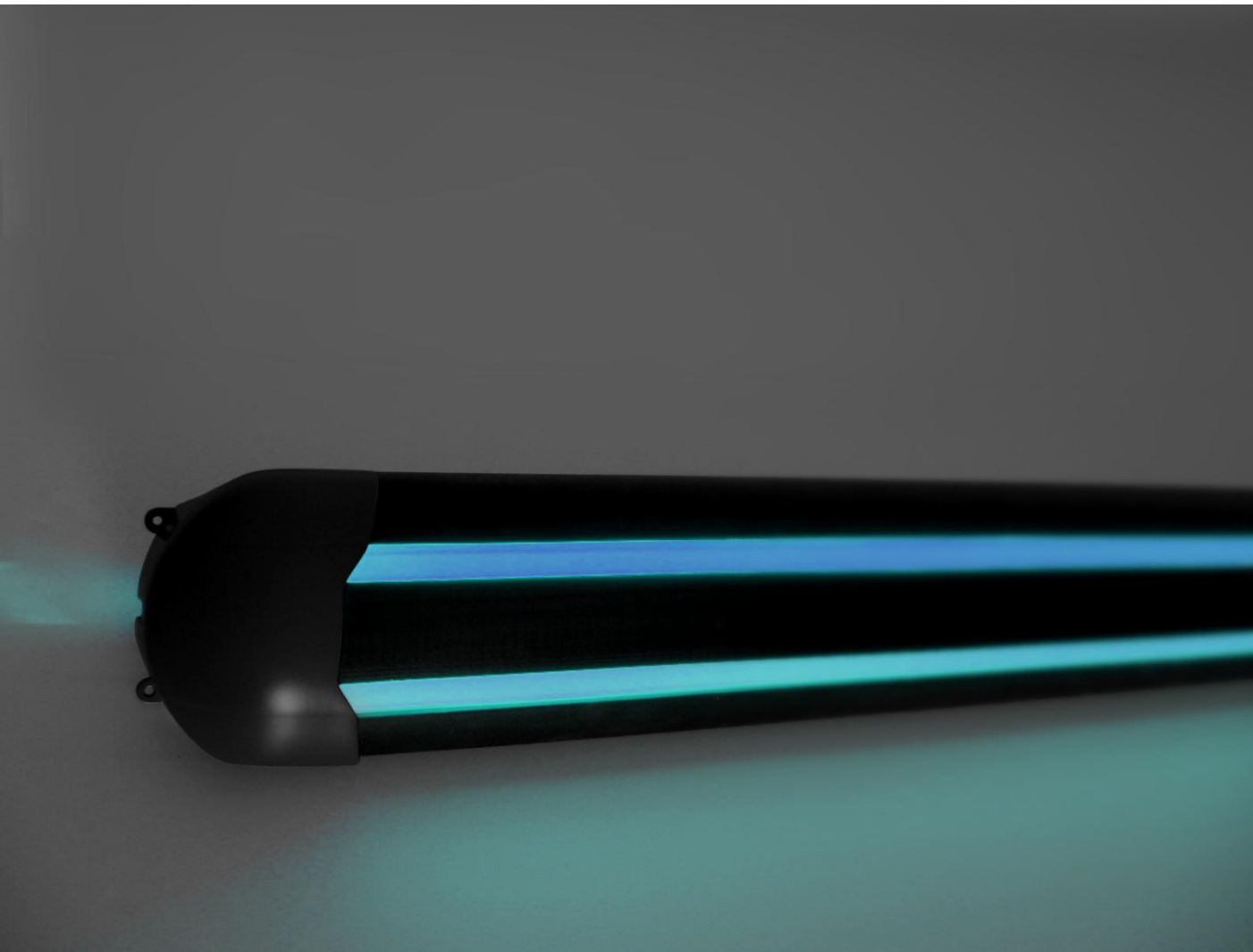


presents

SMARTLINE®

flexible lighting

SMART *line*



flexible lighting

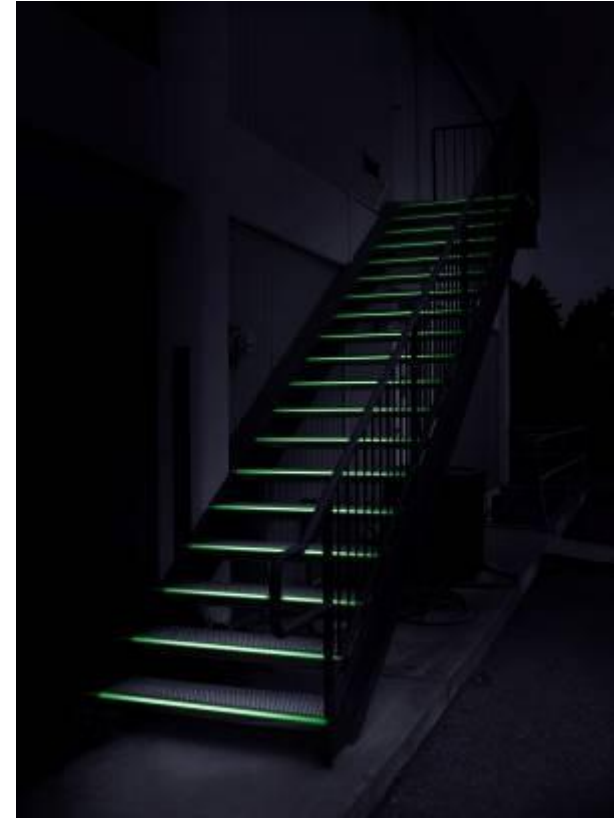
Applications



Public Transportation

flexible lighting

Applications



Guidance lights

flexible lighting

Flexible

The image features a dark blue background with several bright, glowing white and light blue curved lines that sweep across the frame from the top left towards the bottom right. The lines have a soft, ethereal glow, creating a sense of movement and depth. The overall aesthetic is modern and minimalist.

Applications



Marine

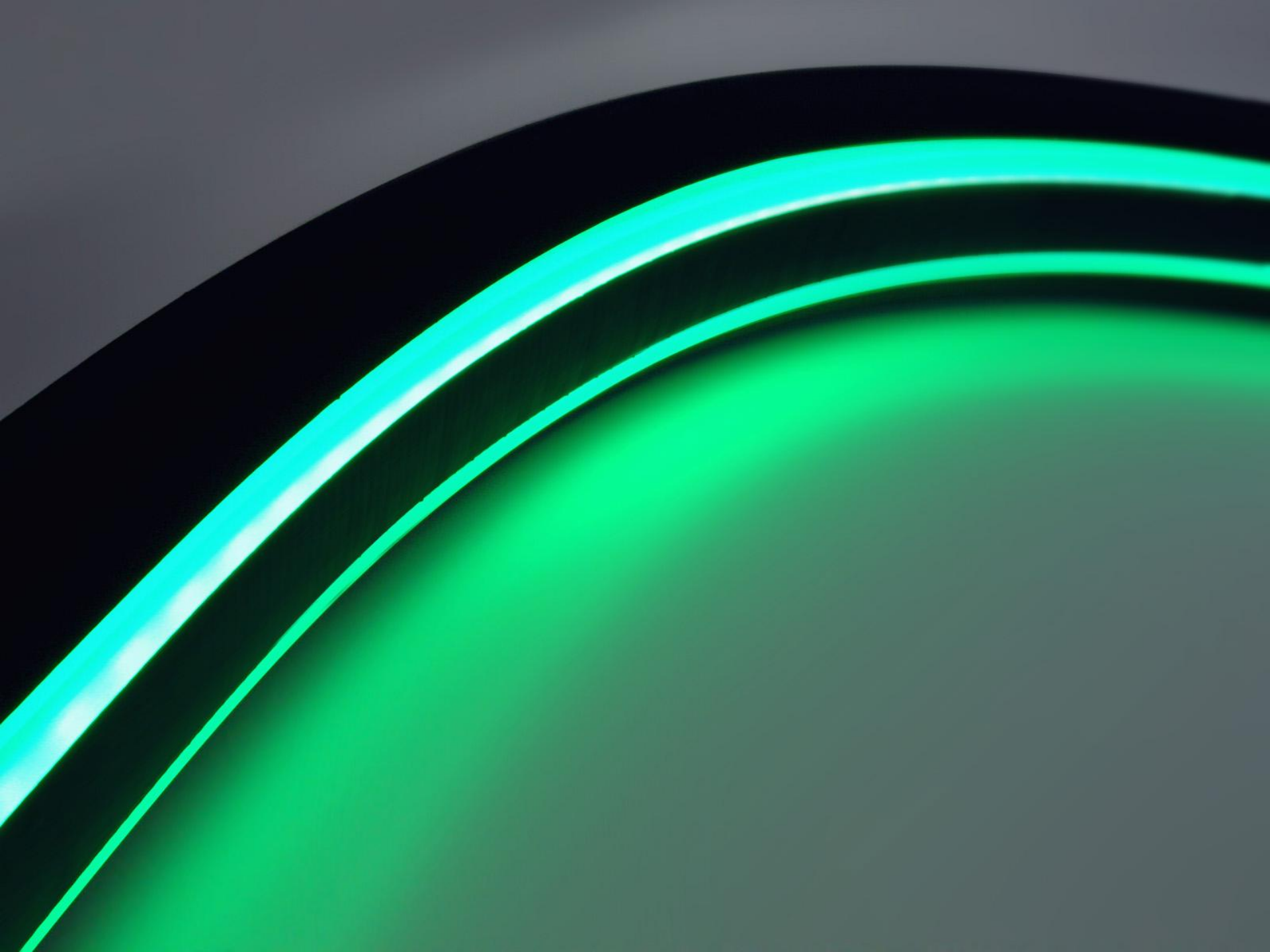
flexible lighting

Applications



Supermarket (check out)

flexible lighting



Applications



Emergency indicators

flexible lighting

Applications



Ergonomic support

flexible lighting



Applications



Hospital

flexible lighting

Applications



Parking garage

flexible lighting

Smart-line is an innovative combination of advanced rubber and LED technology.

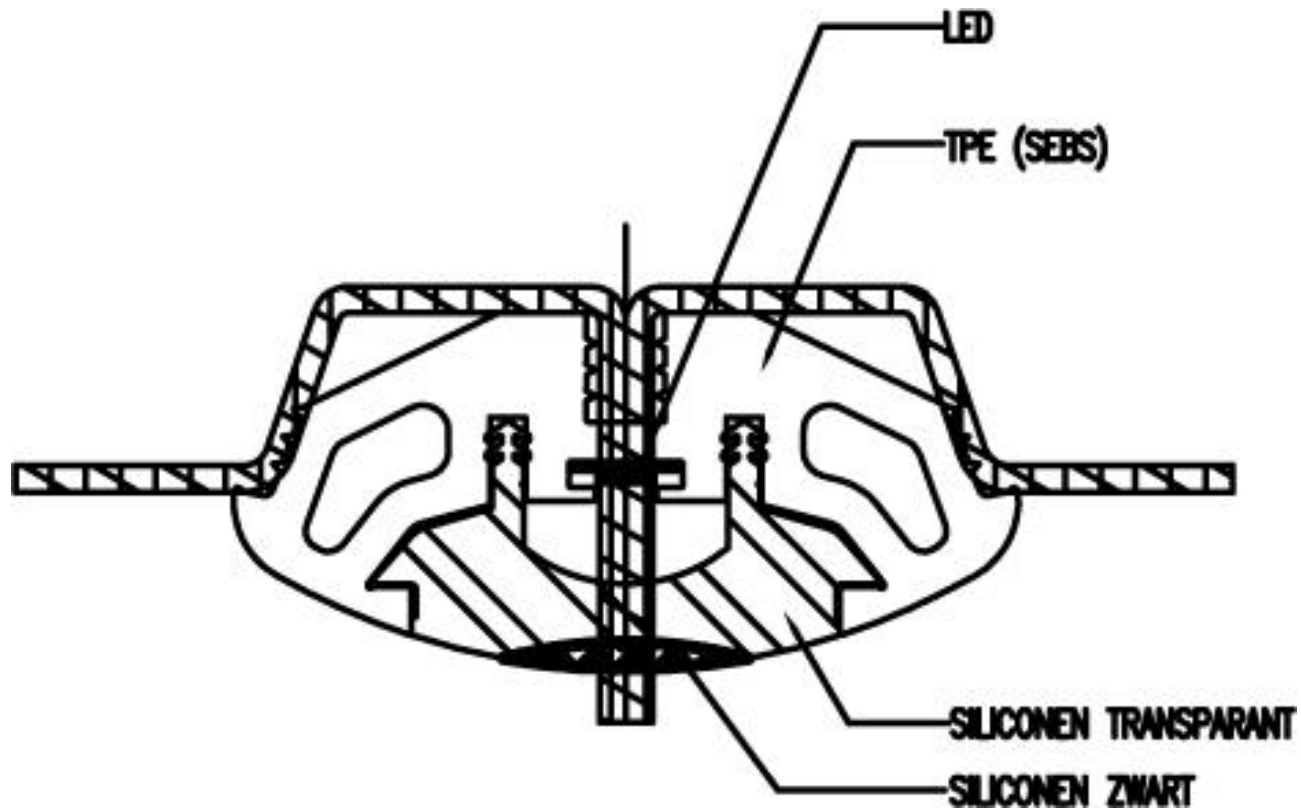
- **Flexible** can be bended/formed any way you want
- **Customizable** extrusion or 3D formed: any shape and color you like
- **Interactive** RGB LED technology offers endless possibilities
- **Design** Perfect integration with existing or new products (bump/ watertight)

Customizable



flexible lighting

Concept layout



SMART *line*



We thank you for your time and attention

SMARTLINE®

flexible lighting