

A high-speed photograph of a bright red sphere splashing into clear blue water. The sphere is partially submerged, with a large splash of water and many small droplets rising around it. The background is a clear blue sky with a bright sun in the upper right corner, creating a lens flare effect. The overall scene is clean and dynamic.

R | E | N | A | .

RENA Poland

Presentation of a core competence

Mechanical plastic processing – production of containers, basins and tanks

RENA

Company structure

R|E|N|A|



Karsten Robel
Managing Director
Administration
Wykroty / Łódź



Zbigniew Moskal
Managing Director
Production
Wykroty



Ulrich Schwellinger
Managing Director
Production
Łódź

RENA GmbH (HQ), Gütenbach (D)

RENA Polska Sp. z o.o. (PL)

Production area: 17.500 m²

Number of employees: 150

RENA Łódź Sp. z o.o. (PL)

Production area: 2.500 m²

Number of employees: 200

RENA Group in figures:

- turnover 2011: ca. 393 mln €
- over 1.300 employees worldwide

Business units:

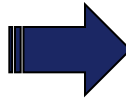
- Solar
- Semiconductor
- Medical
- Circuit boards





Assembly

- OEM products
- assembly groups
- instruments
- devices



- mechanical
- mechatronics
- metal
- plastic



Mechanical plastic processing



Plastic components & devices



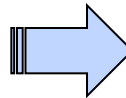
Services





Assembly

- OEM products
- assembly groups
- instruments
- devices



- mechanical
- mechatronics
- metal
- plastic



Mechanical plastic processing



Plastic components & devices



Services



Mechanical plastic processing



- Turning, milling, bending, cutting, sawing, sticking, welding, drilling, measuring & testing
- Working on thermoplastics such as: PP, PVC, PVDF, PE, POM
- Certified welding of thermoplastics ensuring high tightness



Mechanical plastic processing

Plant - overview



- 10 CNC plates milling machines (Reichenbacher/Portatec) max working area 6000x1500x80 mm
- 10 CNC turning machines (DMG/HAAS) max length 200 mm, max diameter \varnothing 300 mm, max pole diameter \varnothing 75 mm
- 4 CNC milling machines (HAAS) max working area 1016x508x102 mm
- 8 IR welding machines up to diameter \varnothing 63 mm
- 3 butt welding machines up to diameter \varnothing 400 mm
- laser marking machine (150x150 mm), engraving machine (250x250 mm), saws (1500x3000x100 mm), furnace up to 300°C (1000x780x450 mm), bending machine
- butt welding machine for thermoplastic plates and edging machine (max width 4000 mm)



Mechanical plastic processing

Plant - examples



CNC plates milling machines
(Companies: Reichenbacher / Portatec)
=> max working area 6000x1500x80 mm



Mechanical plastic processing

Plant - examples



Butt welding machines for thermoplastic plates
with sheet rolling device (Companies Herz, Wegener)
=> max width 4000 mm, max thickness of material 40 mm

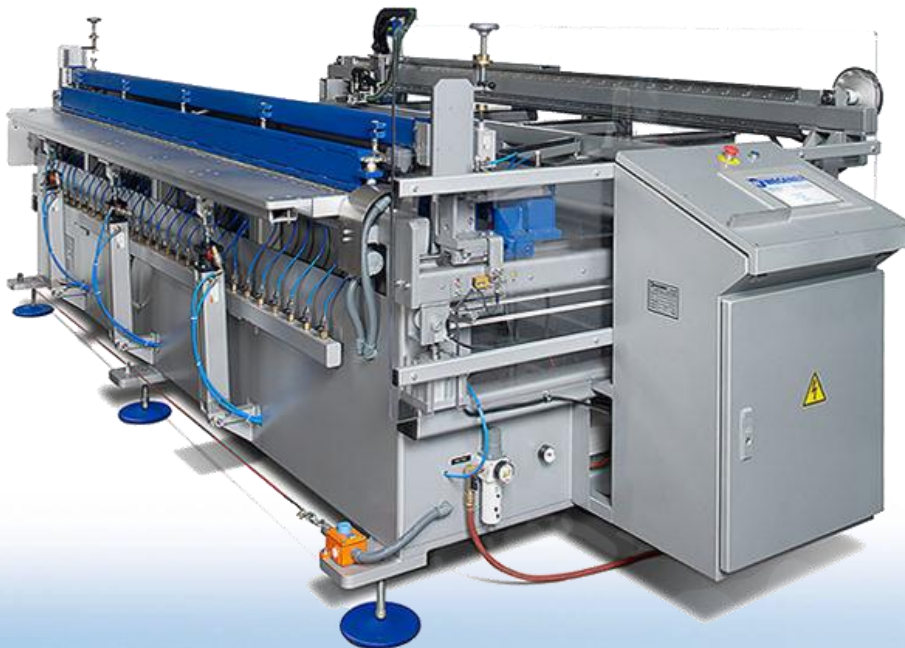


Mechanical plastic processing

Plant - examples



Bending machines (Companies: Wegener, Herz)
=> max width 3000 mm, max thickness of a plate 25 mm
min canal cross-section: 200 x 200 mm



Mechanical plastic processing

Plant - examples



Format saw



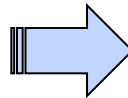
Rotating and lifting device for container and tank production





Assembly

- OEM products
- assembly groups
- instruments
- devices



- mechanical
- mechatronics
- metal
- plastic



Mechanical plastic processing



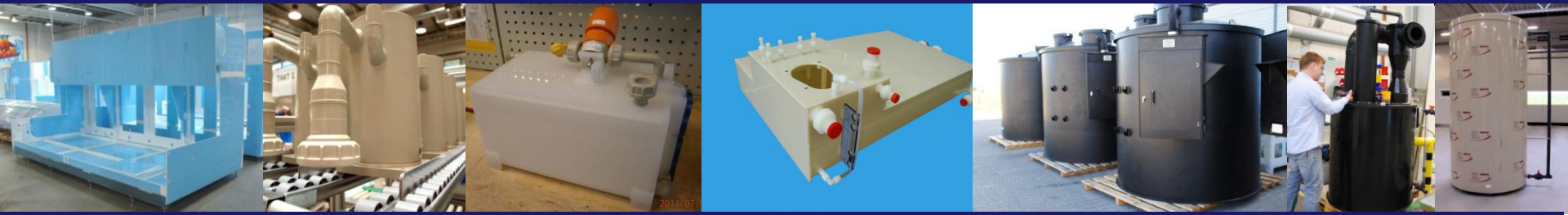
Plastic components & devices



Services

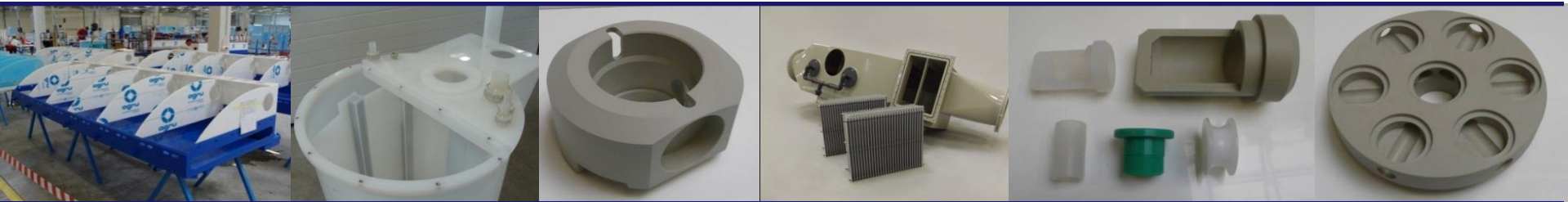


Plastic components & devices



- Product examples:

bodies, basins, air outlet conduit, containers, filters/pumps, scrubber, transport rollers and transport systems, covers, dosing devices, etc.



Plastic components & devices

Product examples



Process tank



Dosing tank



Dosing device



Plastic components & devices

Product examples



Dosing cabinets



Complete pipe system
wet chemical machine



Plastic components & devices

Product examples



Scrubber



Suction inlet



Plastic components & devices

Product examples



Separator



Plastic components & devices

Product examples



Petrochemical tank, 6 m³



Round tank, 14m³

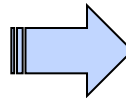
Air outlet conduit, 30 m³



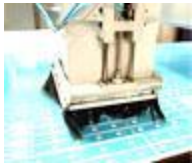


Assembly

- OEM products
- assembly groups
- instruments
- devices



- mechanical
- mechatronics
- metal
- plastic



Mechanical plastic processing



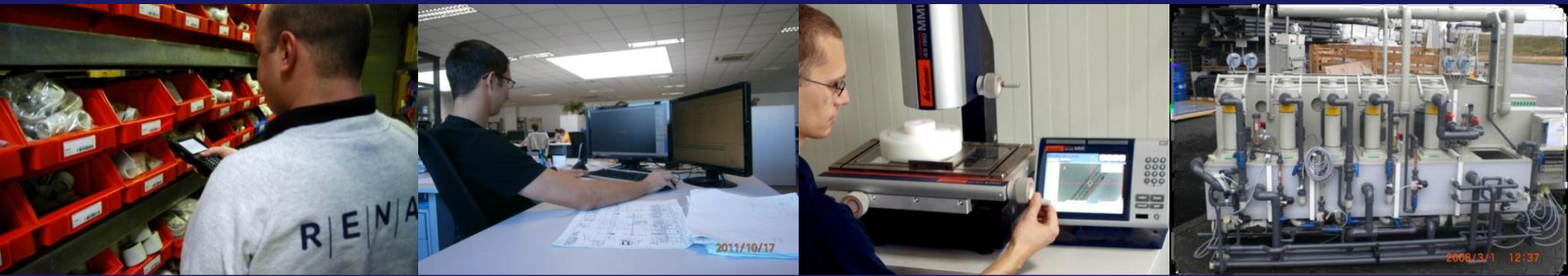
Plastic components & devices



Services



Services



- Working out of technical drawings by our design engineers (CAD System: ME 10, Solid Works; CAM System: AlphaCam, Master Cam, Radu, Esprit)
- Experienced and client-oriented project managers
- Assembly possible also at your or your client's place
- Modern stock management system
- Worldwide delivery and installation



Certified quality



- Companies with Quality Management Certificate according to ISO 9001:2008
- Constant quality of products and services guaranteed
- TÜV SÜD certified welders of synthetic materials
- Continuous Improvement, Lean Manufacturing (5S, KVP, SMED, TPM)
- WHG certificate
- Fully integrated ERP system ABAS
- High delivery reliability, short throughput times and high product acceptance owing to QM



Our advantages for you...



- Ca. 20.000 m² production area
- Over 350 highly qualified and motivated employees
- Possible three shift work
- International customers
- Understanding and ability to work as a direct supplier on production lines
- Over 10 years production according to German quality standards
- Cost reduction by outsourcing
- Prevention of capacity bottlenecks



Contact us



RENA Łódź Sp. z o.o.



Andrzej Grodzki

Phone: +48 42 25 36 775

Mobile: +48 601 944 930

E-Mail: andrzej.grodzki@rena.com



Zbigniew Friedel

Phone: +48 42 25 36 746

Mobile: +48 60 50 40 560

E-Mail: zbigniew.friedel@rena.com



Zbigniew Moskal

Phone: +48 75 64 93 110

Mobile: +48 601 944 080

E-Mail: zbigniew.moskal@rena.com



Sławomir Dudek

Phone: +48 75 64 93 115

Mobile: +48 601 944 116

E-Mail: slawomir.dudek@rena.com



RENA Poland

R|E|N|A|

Wykroty



We are looking forward to your inquiry!

Łódź

