

ricos

Your **Tube** comes true

From customer design

Focus on process:

- **ISO EN 9001 certification (as usual)**
- **ISO EN 9606 certification (in case)**

Focus on the best design guideline:

- **Take care about material propriety**
- **Take care about coupling**
- **Take care about process**

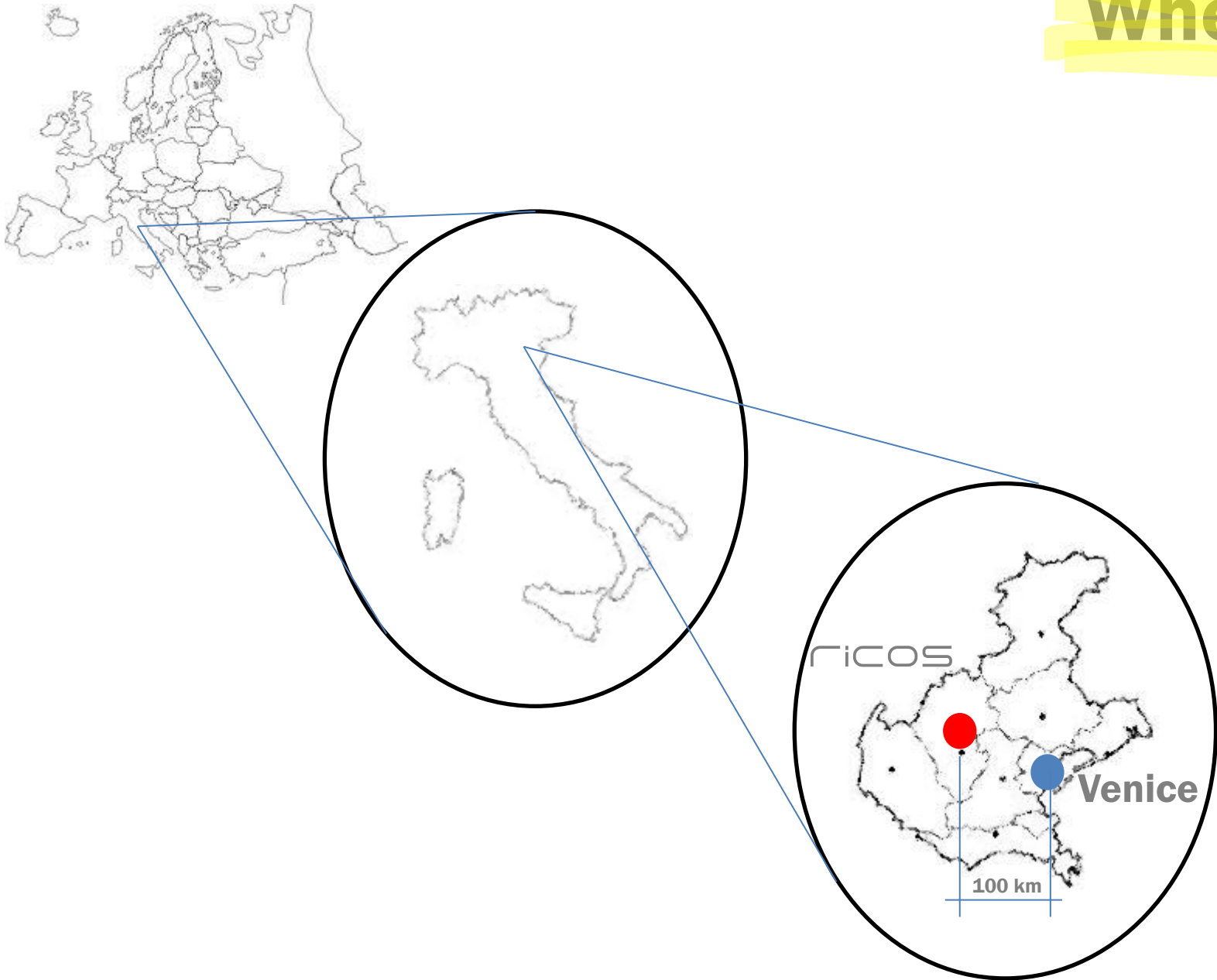
Focus on the material:

- **Normal steel**
- **Stainless steel**
- **Aluminium**

Focus on the process:

***Satisfy the balance between
technical feasibility and cheap process***

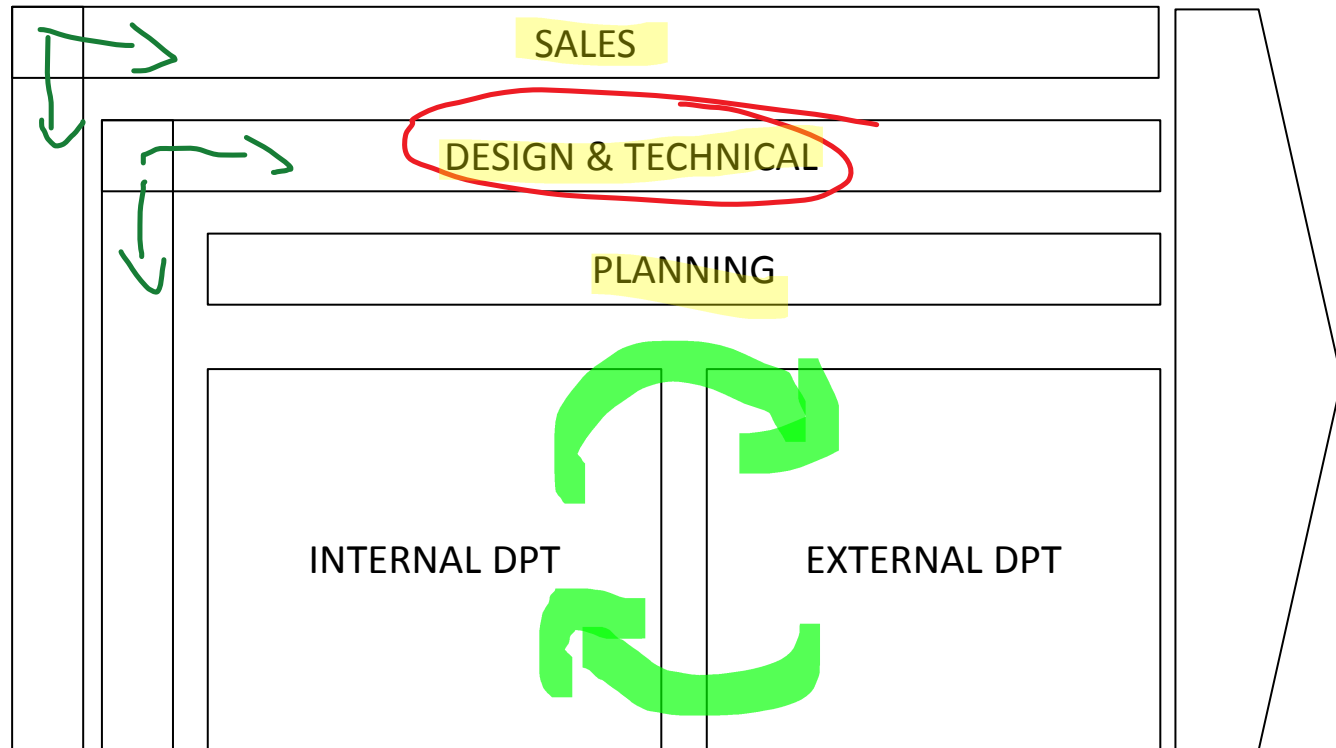
Where



Who

- **Sales Dpt and Design Dpt involved together**
- **High skill in production**
- **Flexibility and quick reply to changes**

RICOS: different processes flexible people

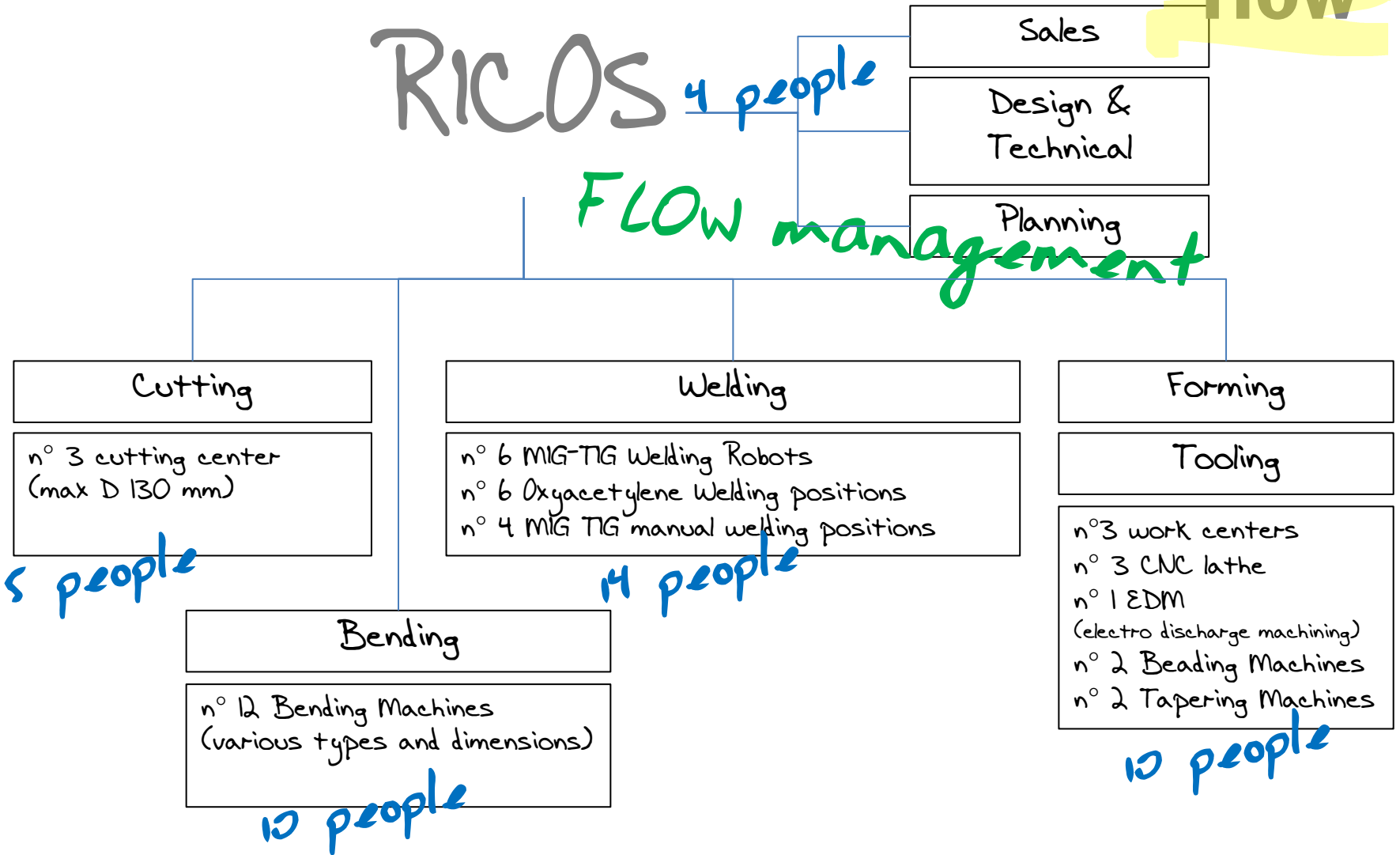


- **Sales & Design Dpt**
- **4 specialized manufacturing Dpt**
- **Balance between knowledge and equipment**
- **40 people involved**

How

RICLOS 4 people

FLOW management



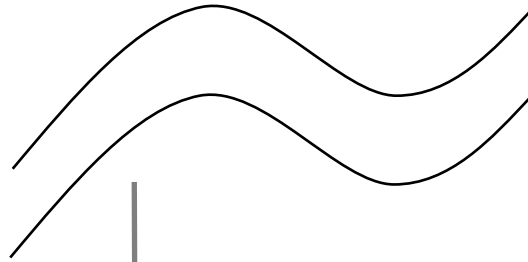
Manufacturing in SPECIALIZED departments

How



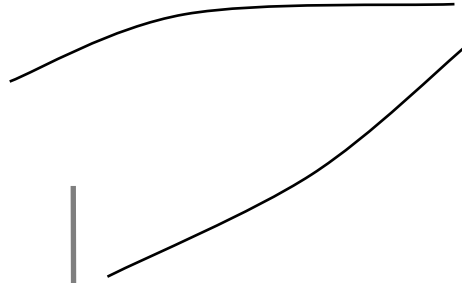
What

- Bending



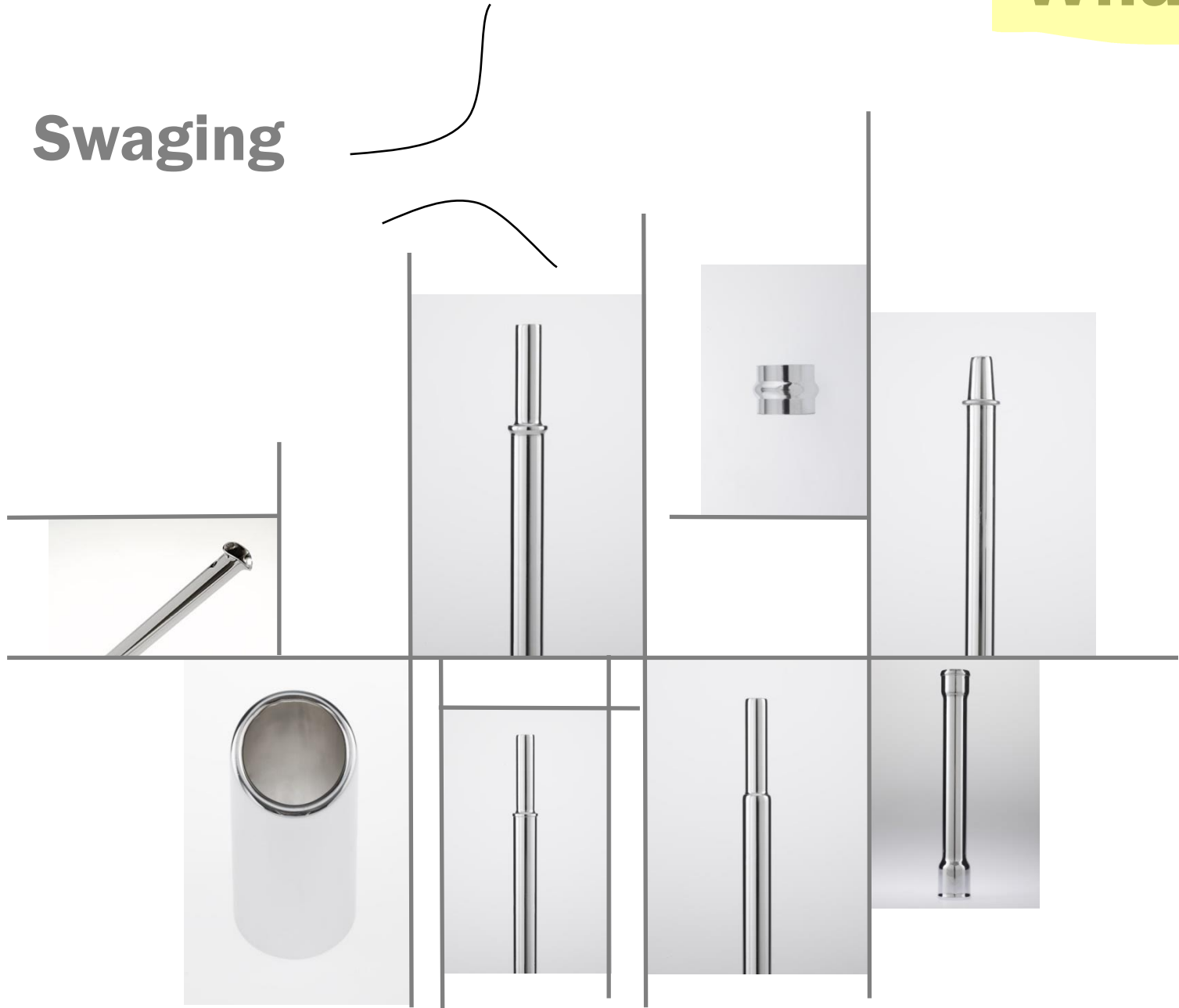
What

- Tapering

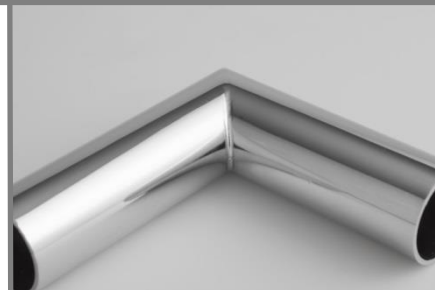


What

- Swaging

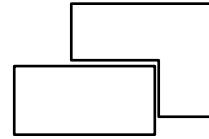


- Welding



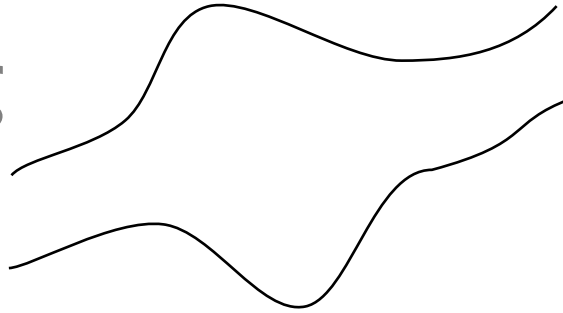
What

- Assembling/joining



What

- Forming



And the one that you think impossible!

ricos

Your **Tube** comes true

soon!