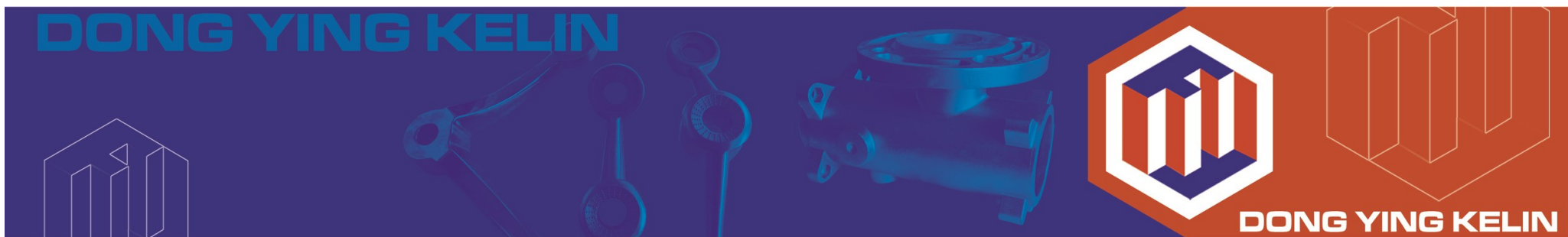


中国铸造协会精密铸造分会会员单位  
China Foundry Association Membership

Mold development Precision casting Precision machining

模具开发 精密铸造 精密加工



**东营科林精密金属有限公司**  
DONGYING KELIN PRECISION METAL CO.,LTD.



东营科林精密金属有限公司  
地址：山东省东营市西城区胜利工业园临清路12号  
电话：0546-7777668 8180216 8180276  
传真：0546-7777618  
邮箱：info@kelincast.com  
网址：www.kelincast.com

Dongying Kelin Precision Metal Co.,Ltd.  
No.12,Linqing Road,Shengli Industrial Zone,  
257000,Dongying,Shandong Province,China.  
Tel: 0086-546-7777668 8180216 8180276  
Fax: 0086-546-7777618  
Email: info@kelincast.com  
Internet: www.kelincast.com

**产品目录**  
Product Catalogue

铸 铸 铸  
诚 品 发  
信 牌 展



ISO9001:2008质量体系认证



ISO9001:2008Certificate

## Company introduction 企业简介

东营科林精密金属有限公司成立于2005年，位于山东省东营市胜利工业园区。本公司采用硅溶胶型壳工艺生产各类精密铸件。公司下设模具厂、精铸厂和加工、抛光厂，是一家集模具开发、精密铸造、精密加工和表面处理为一体的综合型生产企业。

公司主要产品包括泵阀零件、仪表零件、食品、纺织、石油化工等各类机械设备零部件，建筑五金，船舶装备配件等，材质以不锈钢、碳钢、合金钢为主，90%以上的产品出口至欧洲、北美、澳洲、日本及新加坡等国家和地区。

专业的生产、技术及管理团队，严谨的质量控制体系，良好的公司信誉，多年的出口产品生产经验，使得科林公司可以持续不断的向国内外客户提供优质的产品和服务。

公司竭诚欢迎国内外新老客户莅临指导，携手合作，降低成本，共创双赢。

Dongying Kelin Precision Metal Co., Ltd. was established in 2005, is located in Shengli Industrial Zone, Dongying City, Shandong Province. Kelin produces various precision steel castings (investment castings) by Silica sol shell making process. The company consists of a Tooling factory, Precision foundry and Machining & Polishing factory, it is an integrated enterprise with Mold Development, Precision Castings, Precision Machining and Surface treatment.

The main products are pumps & valves fittings, instrument parts, machinery parts involve in food, textile, petro-chemical industries, etc. and construction hardware, marine equipments' fittings. The materials are stainless steel, carbon steel and alloy steel. More than 90% of the products are exported to Europe, North America, Australia, Japan, Singapore, and so on.

The professional team of production, engineering and management, strict quality control & management system, excellent reputation, and many years export experience makes us could supply the best products and services to the customers domestic and abroad. Kelin sincerely welcome new and old customers domestic and abroad to visit and cooperate, to reduce cost and create win-win future.



☆压蜡/Wax Injection



☆组树/Wax Assembly



☆制壳/Shell Making



☆脱蜡/Dewaxing



☆浇注/Pouring



☆光谱检测/Materials Analysis



☆抛丸/Shot Blasting



☆毛坯检验/Casting Inspection



☆加工/Machining



☆加工检验/Machining Inspection



☆表面处理/Surface Treatment

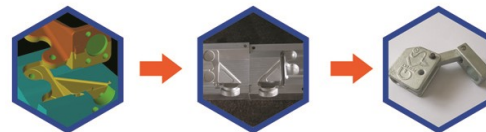


☆表面处理检验/Surface treatment Inspection



☆包装发货/Packaging

## Manufacturing capacity and Quality control 制造能力及质量控制



### 1. 产品研发及模具设计制造

在接到客户的图纸或者样品后，我们专业的工程技术团队会对此进行全面的分析及研讨，并在过程中不断和客户沟通，以确保100%理解客户对产品的各项质量要求。然后我们会由专业的模具设计及制作团队进行模具的分型设计及制作。这样既充分掌握了产品的质量要求又能快速的制作出品质优良的模具，以适合今后的批量生产。

### 2. 样品及批量生产

模具制作完成后，我们会用最快的速度进行样品的试制，并采用多种工艺方案同步进行试验，以便确认出最好最合理的工艺方案，为样品确认后进行批量生产做好准备。

我们的批量生产不仅仅能满足客户的少种类、大批量、多循环的采购模式，我们也能进行多种类、小批量的生产，另外我们也能提供产品的组装服务，以最大限度的满足客户对于不同产品的采购需求。

### 3. 质量控制及管理

为了给广大客户提供最优质的产品，我们严格按照质量管理体系的要求进行产品生产过程中的控制及管理。我们在产品生产过程中的每个环节都有专业的质检人员进行严格的检查，以避免不合格的产品流转到下一工序。最终产品完成后，我们还会在发货之前安排产品进行最后一次全面的检查，以确保客户收到的每一批次货物都是按照产品的质量要求进行生产的。

对于产品的材质成分，我们有着更为严格的控制。在每次浇注之前，我们都会对电炉中的钢水进行材质分析，在确保熔炼的钢水材质成分达标后，我们才会进行浇注。每次进行的材质分析，我们都会将样块进行妥善的保存，并做好编号和记录，以待客户对材质有异议时进行追溯和查证。

对于产品的机械性能要求和各项试验及检测。我们不仅通过自己已有的部分检测设备进行检测，同时我们也会通过专业的实验室和第三方检测机构针对产品的各项要求进行检测，并获取具有资质的专业检测报告提供给客户。

### 1. Products research & development and mould design & fabrication

After receiving customers' drawings or samples, our professional technical team will make comprehensive analysis and discussion, and communicate with customers at the same time, to make sure we absolutely understand quality requirements of the product. Then we will arrange our professional mould design & fabrication team to design and manufacture mould. In this way, we can grasp the product quality requirements and produce high quality mould quickly to meet batch production in the future.

### 2. Samples and batch production

After mould is finished, we will try to produce samples as quickly as possible, and various process plans are tried, in order to choose the best process plan to prepare for batch production after samples are confirmed.

Our batch production can meet both rare-species, high-volumes, multi-cycle and multi-species, low-volumes purchasing models. In addition, we can also offer products assembly service, to satisfied customers' purchasing requirements of different products.

### 3. Quality control and management

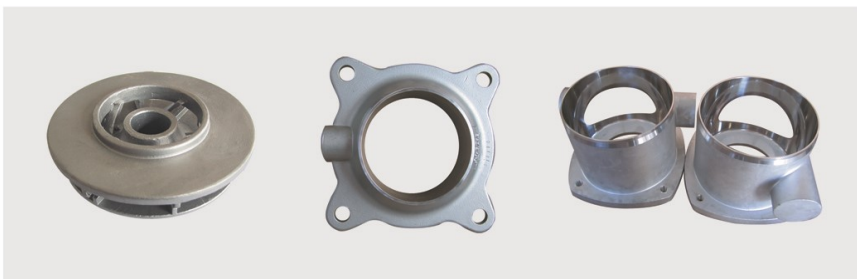
In order to offer customers the highest quality products, the production process is controlled and managed in accordance with quality management system. Every step of our production process is inspected by our professional quality control personnel, in order to avoid defective products are entered into the next production process. After the final products are finished, we will arrange the last comprehensive inspection before shipment, to make sure every product is produced in accordance with quality requirements.

For the material composition of the product, we have a stricter control system. We will make material analysis for the molten steel of every electric furnace before pouring, only the material composition can meet the standard, then we begin pouring. We will save and number sample of each material analysis, if customer have different opinions of the material, we can reference it.

For the mechanical property and various tests and inspections of products, we can not only inspect by our own equipment, but also we can arrange the professional laboratories and the third party institution to inspect each requirement, and offer customers qualified professional inspection report.

## 产品分类及照片/Products Catalogs and photos

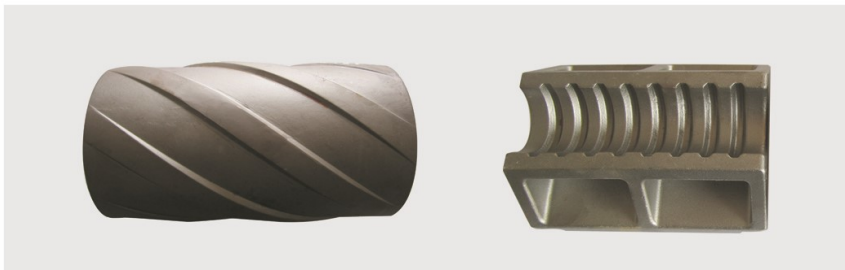
### 泵零件/ Pump Components



### 仪表零件/Instrument Parts



## 石油装备零部件/Oil equipment spare parts



## 手工工具/Hand Tool



## 阀门零件及管件/Valve Components and Pipe Fittings



## 各类机械零件/Machinery Components



## 建筑五金/Architectural Hardware



## 船舶装备配件/Marine Hardware

