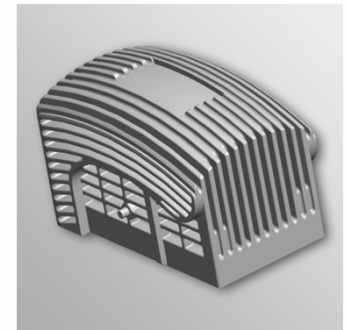
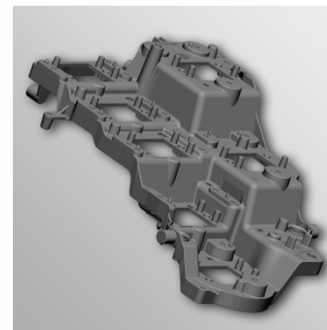
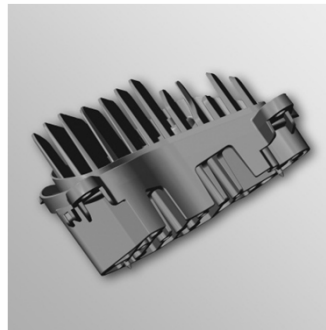
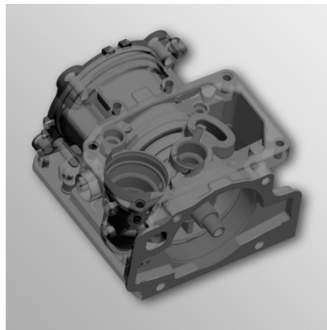


PERFECTION IN DIE-CAST ALUMINIUM



COMPANY PROFILE

location: Menden

foundation: 1963

no. of employees: 280

turnover 2014: 30,5 Mio. €

management: Michael Beste
Willo Blome

ownership: 100 % subsidiary of
Karl **S**cheffer **K**lute GmbH & Co KG, **S**undern



SKS GROUP OF COMPANIES



www.sks-germany.com
www.sks-metaplast.com



www.blomus.com



www.schoett-druckguss.de



ALUMINIUM-ALLOYS



- 226 D = EN AC 46000 / EN AC-Al Si9Cu3(Fe)
- 230 D = EN AC 44300 / EN AC-Al Si12(Fe)
- 231 D = EN AC 47100 / EN AC-Al Si12 Cu1(Fe)
- 233 D = EN AC 43200 / EN AC-Al Si10 Mg(Cu)
- 239 D = EN AC 43400 / EN AC-Al Si10 Mg(Fe)
- Silafont 36

cast quantity per year (finished parts) about 3.000 t

FOUNDRY



- 14 die cast machines
- clamping forces from 220 to 900 t
- fully-automated casting cells, equipped with spray and extraction robots
- vacuum units
- range of parts from 20 to 5.000 gram

MACHINING & ASSEMBLY



- 15 machining centers
- CNC lathes
- automation / Robot technology
- special machine engineering and fixture construction
- 3 washing systems with different processes
- shot blasting
 - satellite abrasive shot-blasting machine
 - continuous feed shot blasting machine
 - tumblast system
- complete component assembly
- surface treatment
 - powder coating
 - cathodic dip painting (CDP)
 - impregnating
 - galvanization
 - chromating
 - hard coating
 - ball polishing
 - phosphating



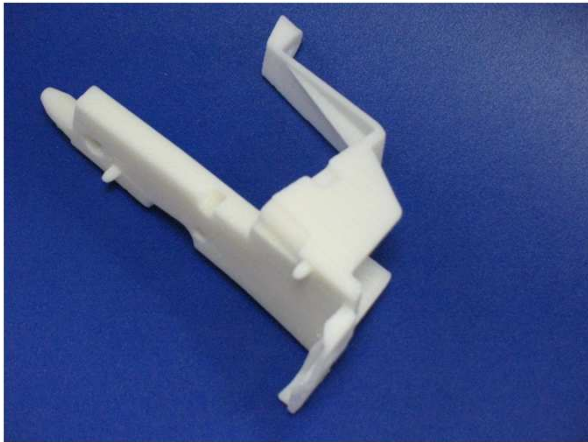
Aluminium-Druckguss in Perfektion.

SLIDE GRINDING



- 3 slide grinding systems
 - 2 tub vibrators
 - 1 through speed vibrator
- 4 continuous drying furnaces
- 5 roundtub vibrator
- environmentally conscious using of a closed water circuit with water treatment system

3D-PROTOTYPING



- providing your 3D data or order a complete package including 3D-CAD development.
- casting and casting construction design based on your functional requirements and specifications.
- promptly producing of prototypes from:
 - thermoplast ABS (physical size 200 x 200 x 300 mm).
 - aluminium ingots in sand casting process, including NC finishing.
 - aluminium block material in milling process.
 - aluminium in investment casting, including NC finishing.

QUALITY ASSURANCE



- 4 Zeiss measuring machines
- Spectrum analyzer RS1000
- X-ray test equipment
- Leak test equipment
- Camera surveillance systems
- Thermal imaging camera

CERTIFICATES

quality management system ISO/TS 16949

Certificate

Standard **ISO / TS 16949:2009**
(2nd edition, 2009-08-15)

Certificate Registr. No. 01 111 020018
IATF Certificate No. 0211395

Certificate Holder: **Schött Druckguss GmbH**
Siemensstr. 2-8
D - 56706 Menden

Scope: Production and machining of aluminium-die-cast-parts

Proof has been furnished by means of an audit that the requirements of ISO / TS 16949:2009 are met.

Issue date/Expiry date: The certificate is valid from 2015-06-08 until 2018-06-07.

Release date: 2015-06-09


TÜV Rheinland Cert GmbH
Am Grauen Stein 51105 Köln
Germany


2-IAO-QMC 01003

www.tuv.com

 **TÜVRheinland®**
Precisely Right.

environmental management system DIN EN ISO 14001 : 2004

Certificate

Standard **ISO 14001:2004**

Certificate Registr. No. 01 104 031489

Certificate Holder: 
Schött Druckguss GmbH
Siemensstraße 2-8
D - 56706 Menden

Scope: Production and machining of aluminium-die-cast-parts

An audit was performed, Report No. 031489. Proof has been furnished that the requirements according to ISO 14001:2004 are fulfilled.
The due date for all future audits is 16-04 (dd.mm).

Validity: The certificate is valid from 2013-05-03 until 2016-05-02.
First certification 2004

2013-04-29


TÜV Rheinland Cert GmbH
Am Grauen Stein 51105 Köln
Germany


DGA-ZM-58-95-60

www.tuv.com

 **TÜVRheinland®**
Precisely Right.

energy management system DIN EN ISO 50001 : 2011

Certificate

Standard **ISO 50001:2011**

Certificate Registr. No. 01 407 031489

Certificate Holder: 
Schött Druckguss GmbH
Siemensstraße 2-8
D - 56706 Menden

Scope: Production and machining of aluminium-die-cast-parts

An audit was performed, Report No. 031489. Proof has been furnished that the requirements according to ISO 50001:2011 are fulfilled.
The due date for all future audits is 26-04 (dd.mm).

Validity: The certificate is valid from 2013-04-28 until 2016-04-27.

2013-04-29

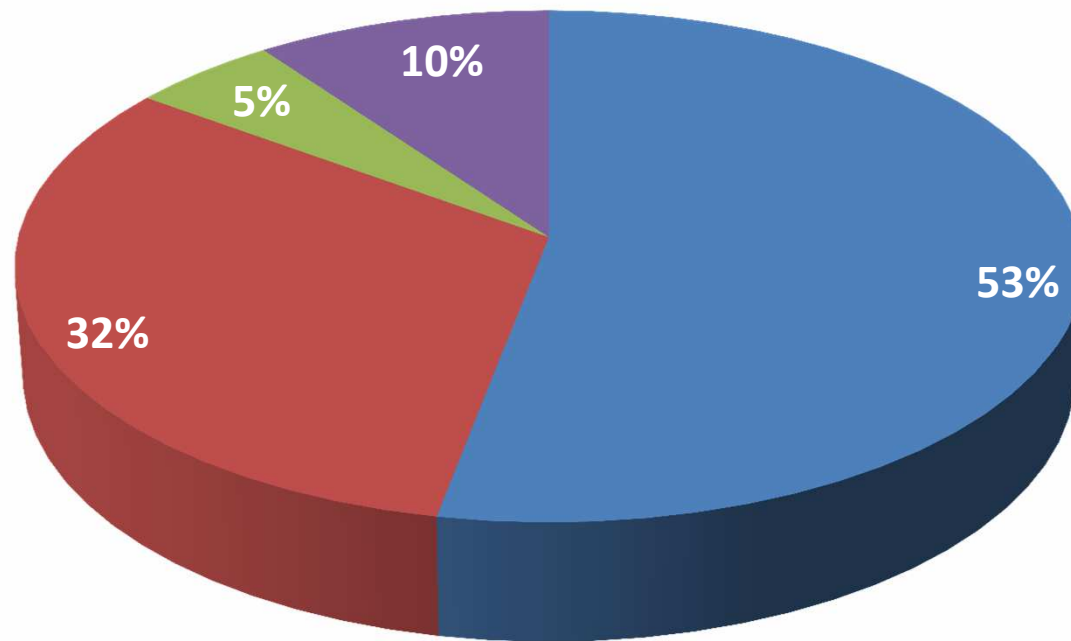

TÜV Rheinland Cert GmbH
Am Grauen Stein 51105 Köln
Germany


D-DA-30001-R1-01

www.tuv.com

 **TÜVRheinland®**
Precisely Right.

INDUSTRIES



■ Automotive

■ Heating Technology

■ Vehicle Technology

■ Engineering, Electronics,
Construction- and
Furniture-Industry, Filter-
and Light-Technology



Aluminium-Druckguss in Perfektion.

APPLICATION EXAMPLES



oil tube and bearings as a central part in the high performance pump system



two-part oil pump housing for high performance motors



actuator housing for turbo engines



cover for oil-level indicator



multi-component housing for compressor technology



front- and rear housing for control unit



cover for electronic control system for Xenon light



modular housing for control electronics



heat exchangers for the automotive industry



two-part burner housing for gas condensing systems



combustion chamber for automotive heater



fan housing for a gas-air system in condensing boilers



heat reduction bracket for LED headlamps



heat reduction bracket for LED daytime headlights



heat reduction bracket for LED rear lights



SCHÖTT

Aluminium-Druckguss in Perfektion.

CONTACT



address Schött-Druckguß GmbH • Siemensstraße 2 – 8 • 58706 Menden
• P.O. Box 27 56 • 58687 Menden

internet www.schoett-druckguss.de

sales e-mail: vertrieb@schoett-druckguss.de
phone: +49 / (0) 23 73 / 16 08-1 11
fax: +49 / (0) 23 73 / 16 08-1 10

reception e-mail: info@schoett-druckguss.de
phone: +49 / (0) 23 73 / 16 08-0
fax: +49 / (0) 23 73 / 16 08-2 10

purchasing e-mail: einkauf@schoett-druckguss.de
phone: +49 / (0) 23 73 / 16 08-1 15
fax: +49 / (0) 23 73 / 16 08-2 15



Aluminium-Druckguss in Perfektion.