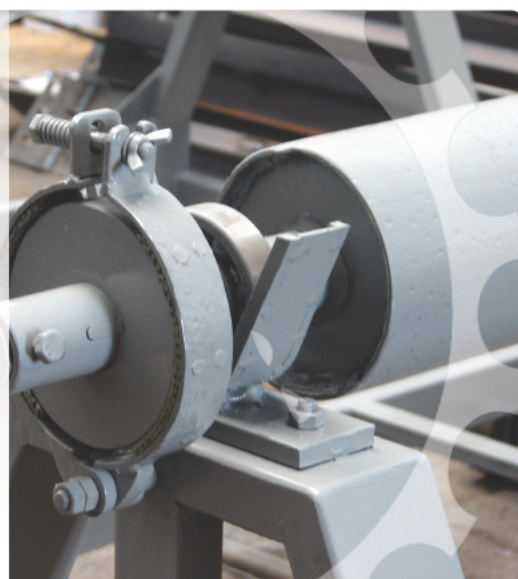


2670 Industrial zone  
BOBOV DOL  
tel.: + 359 702 652 22  
fax: + 359 702 670 02  
mobile + 359 88 544 61 47  
mag@magbg.net



Production of standardized  
and custom metal products,  
equipment and machines.  
Repairing of electric motors  
up to 250 KW-PB



**MAG LTD**  
www.magbg.net



**MAG LTD**  
www.magbg.net

The company has a Certificate No3 dated 26.04.2004 given by "Minproekt Joint-stock company", with stands bail that the electromechanical workshop department is supplied with the necessary machines, instruments, tools and testing devices needed for working with explosion-proof electrical equipment.

MAG Ltd is company registered by the Regional Court in the town of Kjustendil in 2003. The company is the legal successor of the industrial equipment, the manpower, the technology, the engineering design and documentation of the "Central Repairing Base – BD Ltd" in the town of Bobov dol. The Base has 50 year tradition in manufacturing of a great range of spare parts and a great variety of ironware used in the mining equipment, the installations and the electrical machines used in the collieries.

The period since 2003 up to now has been characterized by the expansion of the products range, the variety of spare parts and services, offering competitive price and a high quality of maintenance.

Guarantee for high quality services is the available manpower, the long-term experience they have and the equipment in use:

- The industrial and engineering buildings are situated on an area of 6290 square meters and the build-up air-space of the buildings is 88060 cubic meters. There is a suitable infrastructure: electric supply of 1000 KVA and voltage of 20 KV, a railway connection, which services the production premises, water supply and a parking lot.
- Machines and equipment having the capacity to employ 500 people.

The production base of "MAG Ltd" is situated in 9 workshops, each of them being 18 meters wide and 70 meters long. There are seven bridge cranes which can lift up to 8 tons, one crane lifting up to 12,5 tons and five smaller telpher cranes.

The Company has also many machines and installations. Here are listed some of them:

- |   |   |
|---|---|
| - Lathes /23 items/- L3000 distance between the centers at the most, workable diameter of D1100 at the most | - Radial drilling machine /2 items/- $\phi$ 75 and h 2000   |
| - Cutting machines / cutters-8 items/ with melling table up to L1600 at the most                            | - Beading machine with useful length of bending L 4100      |
| - Boring machines - /2 items/   | - Air-hammer with stroke up to 160 kg                       |
| - Gear-cutting machine with maximum cutting module up to $\phi$ 10  | - Guillotine /2 items/ thickness up to 160 mm               |
| - Gear-shaping machine /2 items/ with maximum drive of L 500  | - Cam press from 20 up to 160 tones                         |
| - Guillotine shears /2 items/- width of the sliced sheet L 3150 and thickness h 16                          | - Gas-cutter-maximum thickness up to 160 mm                 |
| - Gear- saving machine /2 items/ having work-table 560x1000   | - Plasma arc cutting 120 A, thickness of the material 45 mm |
| - Plain grinder with working table 915x135  | - Wire-feeding machine /4 items/ 500 A                      |
| - Iron sheet sagging shaft – maximum width and  | - Thread-rolling machine $d=3 \times 70$                    |
|   | - Hydraulic hack-saws /4 items/                             |
|   | - Band-cutting machines /4 items/                           |
|   | - Bench-drilling machines /10 items/                        |



The company specializes in production of:

- Metal halls and Constructions



- Steel structures allow the construction of buildings that take large areas to compile.

- Antennas for the mobile operators and stainless steel grid columns



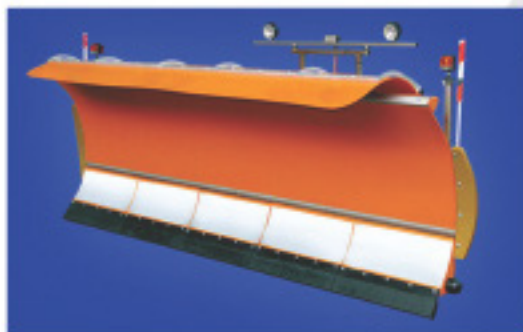
- They are manufactured according to client's documentation and are designed for the telecommunications and energy sectors. All kinds of roof antennas are also manufactured. The company also manufactures and installs all types of lattice pillars.

- Billboards, decorative bars and fences





### • Snowplows and Sand dispensers



- Snowplows and Sand dispensers can be produced according to the requirements of the customer and the model parameters of the product.

The company possesses proven specialists which provides exceptional quality in production.

### • Containers and Metallic pallets



- Designed for collection and storage of paper, construction and metal waste. Can be served by a special machine for waste collection.

### • Gondolas, platforms and basins



### • Outriggers and buckets for excavators



- The arrows and buckets for excavators are made of wear-resistant steel, which ensures longer operations.

### • Crushers and parts for crushers



- MAG offers crushers with high reliability, excellent crushing ability, quick and easy service and maintenance, saving in crushing, also suitable for applications underground and high flexibility, prepared to work in fixed and mobile operation.

### • Container Buildings



- Application: Office configurations and sales offices, bank branches, workshops, warehouses, gas stations, restaurants, pharmacies, academic rooms and nurseries, dining rooms, VIP rooms, organizational offices, press conference offices, concierge rooms, wardrobes, mobile clinics and first aid stations, military camps and many more.



## • Hoppers and Compact



## • Mobile and stationary belt conveyors and rolls them



- Mobile and stationary belt conveyors, designed for horizontal and sloping transportation of different kinds of loads in mining, metallurgy, cement, chemical and other industries.

We manufacture spare parts for all kinds of belt conveyors, as follows:

- rollers - operate at high concentration of dust, moisture and other extreme environments
- roller ways;
- tensioning stations;
- self alignment stations;
- drive stations;
- cleaners and scraped ploughs.

- Mining railway wagons and wagons



- Riddled surfaces-  $\varnothing 5$  up to  $\varnothing 40$  openings

- Metallic mining support



- The mine-metal roof support is used to reinforce tunnels for subways, highways and in the mining industry .The Company is doing metal bending with extremely high accuracy in the bending process.

- Air-pipes and gas-pipes lift for building sites





- Pressing ends of hydraulic hoses (high pressure)



- Casting and manufacturing of aluminum products

- Manufacture of gears up to module 10 and a diameter of 585



- Copper jaws for furnace ferroalloys



- Electric furnace ferroalloys holder





- Details used in Thermal power plants are made from stainless steel



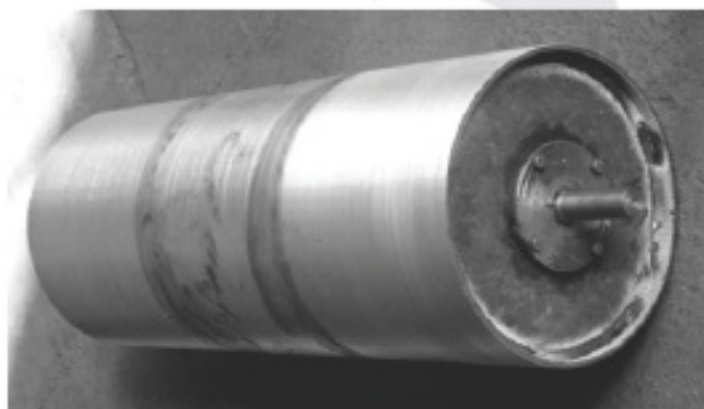
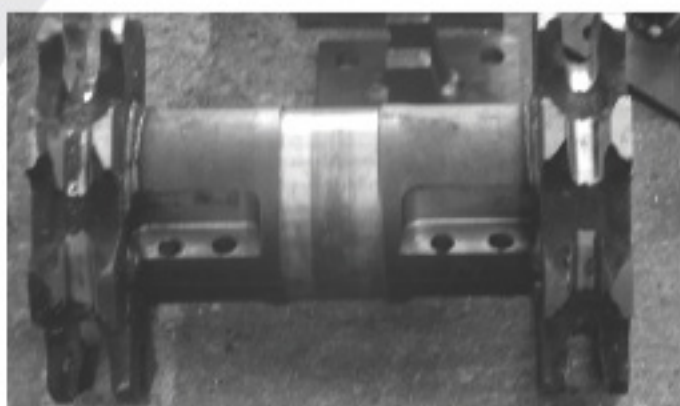
#### The company produces more :

- Construction billets
- Mono-rails /for the mining production/
- Steel poles
- Green house constructions
- Spare, arts for road-building machines
- Rack and tool-stand systems
- Turners services – up to  $\varnothing 1000\text{mm}$  and L 3000
- Cutting with gas-cutting machine up to 160 mm
- Sagging of metals up to 20mm
- Machining of average position details
- Spare parts for screening

The company is capable to produces many other optional products.



• Spare parts for the mining industry



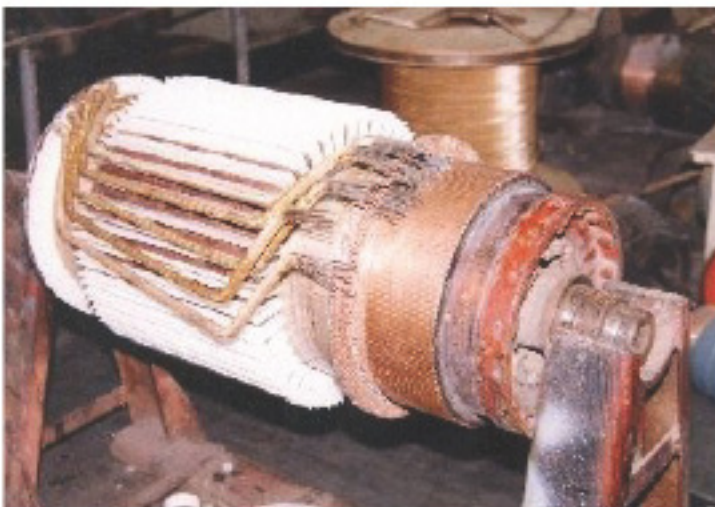
MAG Company manufactures spare parts for chain transporters: SKAT, SR 70, SP 63; SP 46 and also does the manufacturing and repairing of the entire range of spare parts for the mining industry. For these services we have the necessary documentation and competent professionals to ensure quality in production



**The company specializes in the repair of :**

- Repairs of low-voltage and high voltage motors in normal and explosion-proof implementation
- Explosion-proof electrical machinery
- Machines for the mining industry
- Pumps
- Ventilators
- Roar-building machines
- Sifter installations
- Reduction gear
- Buckets and outriggers for excavators and digging machines

**The company is capable to repair many other optional products .**





• Vibrating sieves

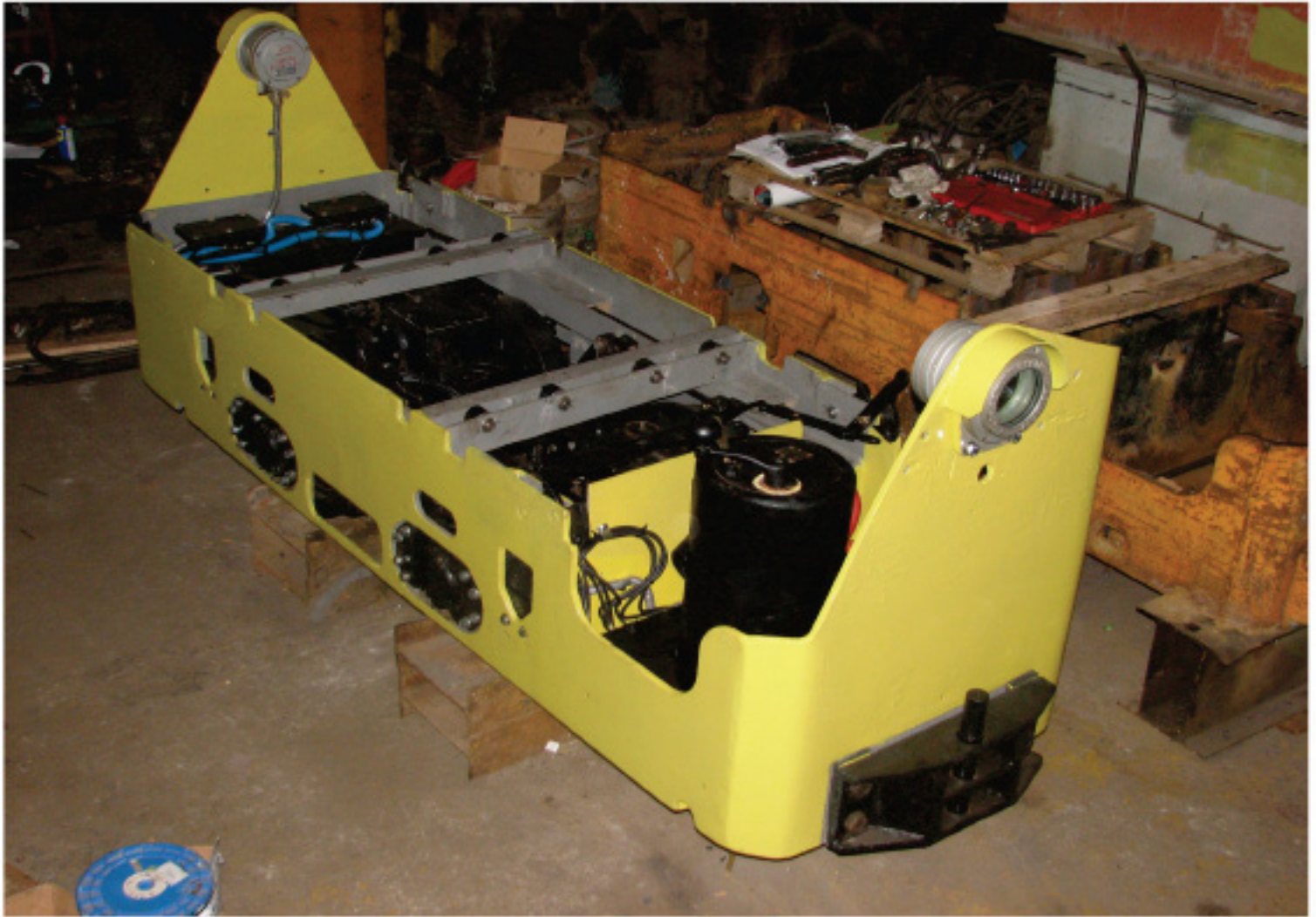


• Conveyors and elevators





• Mining streetcar



• Augers

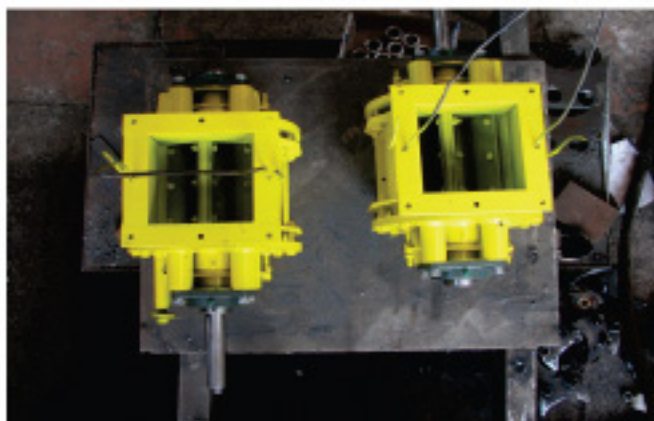




• Separator



• Rotary valves



• Filler bags of coal, sand, corn, grain and other bulk products





- Shredder for crushing plastic



- Sieve for sifting

