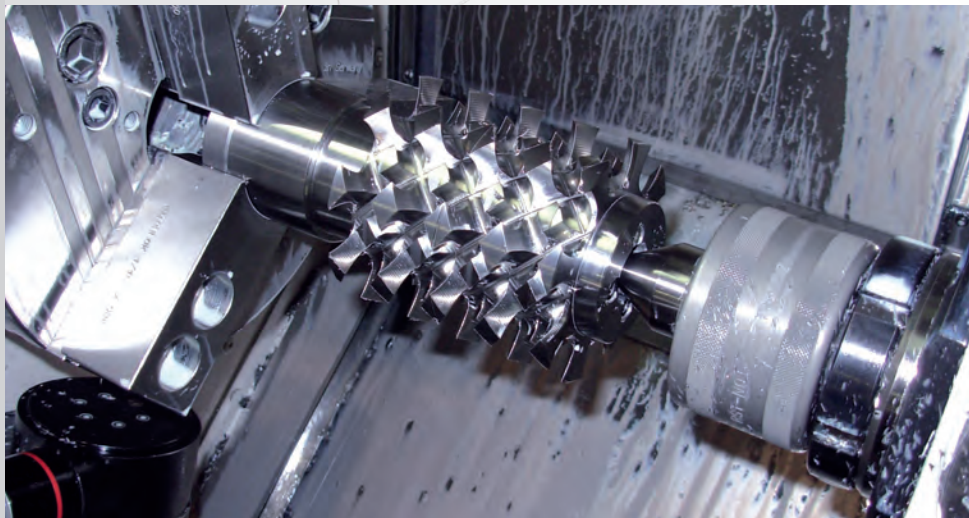
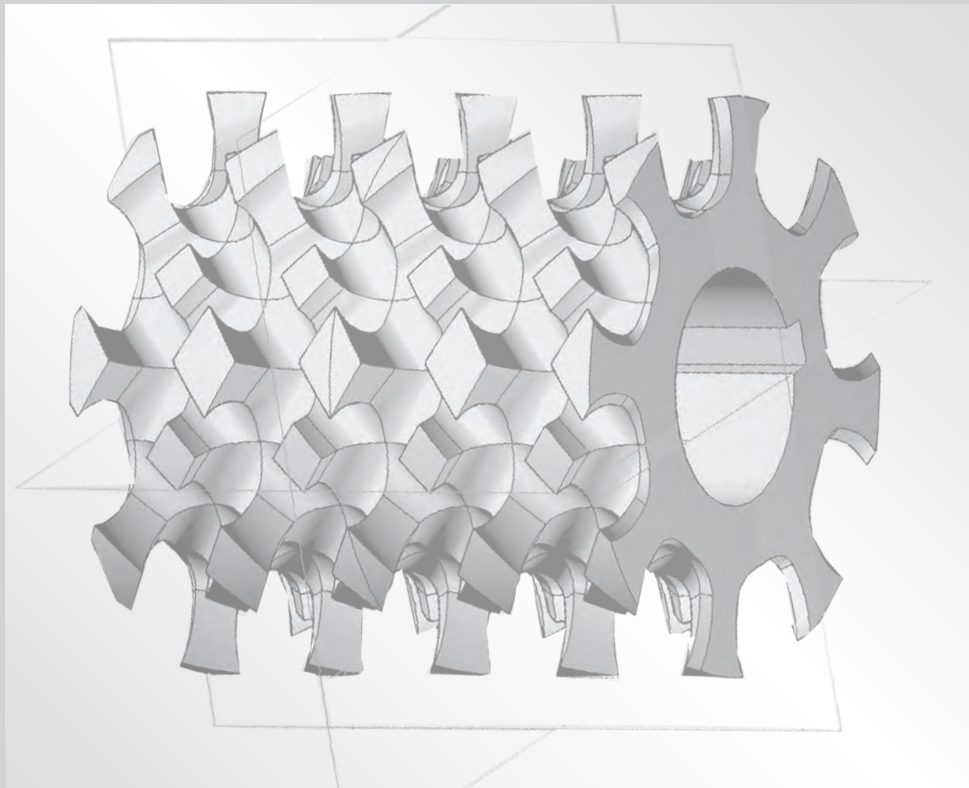


comec

EXPERIENCE GENERATES PRECISION



- **CONSTRUCTION** OF SMALL AND MEDIUM LOTS OF MECHANICAL COMPONENTS
- **DESIGN** AND CONSTRUCTION OF EQUIPMENT
- **REVISION** AND **MAINTENANCE** OF INDUSTRIAL EQUIPMENT OR MACHINERY
- **SHARPENING** OF INDUSTRIAL BLADES

► THE COMPANY

The company was founded in 1987 and since its inception, it has emerged due to its ability to find state-of-the-art technological solutions that emphasize its distinguishing characteristics: dynamism and flexibility. Comec is a company that is effective in high-precision mechanics and attentive to the needs of the market, while internally promoting the professional and technological growth of its staff.



Clients who are seeking a partnership will find authentic collaboration with our company and the exchange will become a driver for mutual growth. Together with the client we develop solutions to reduce production costs and improve the product's reliability.

Comec is specialized in production in those sectors that require an accurate control of not only the finished product, but at every stage of the construction cycle.

Our first objective is the satisfaction of the customer, who we try to follow with competence and professionalism.

Our strength is the ability to combine a design phase in which the customer is a protagonist with state-of-the-art machinery. Comec is equipped with important and varied equipment that allows competitiveness and precision in both small- and medium-sized lots.

Quality Management System

In 2007 the company obtained the qualification of its Quality Management System in compliance with UNI EN ISO 9001. The quality policy is aimed at ensuring the effectiveness and continuous improvement of the organizational system, considering the customer as the center of corporate processes. Our company focuses on absolute quality while respecting all requirements. To achieve this goal, checks and validations are carried out at all cycle phases, whether they are internal or outsourced processes.



► SECTORS

The design and construction of high precision mechanics for leading companies worldwide.
Our customers include:

- manufacturers of machine tools (woodworking, rubber recycling)
- manufacturers of laser cutting machines
- automotive
- food companies
- construction companies (earth moving machinery)
- printers, bookbinders, paper mills
- companies specialized in sheet metal processing
- structural work
- gear manufacturers
- medical sector
- design and interiors (prototypes)
- universities

► THE MARKET ASKS US FOR

- the construction of mechanical components
- the design and manufacture of equipment
- the revision and maintenance of industry equipment and machinery
- the grinding of industrial blades for cutting paper, shears, plastic product grinders, ice-shavers

► ADDED VALUES

- technical consulting for the use of suitable materials and specific treatments for the manufacture of components according to your needs
- technical support during the design and development phase
- certified quality system
- components with heat and/or surface treatments
- component repair and reconstruction service accompanied by technical documentation
- creation of industrial automation made to your specifications and with our technical support

► METHOD – ORGANIZATION – PRODUCTION CYCLE

Our customers can count on an agile, coordinated, and well-organized structure, on qualified and professional people to speak with, and on maximum cooperation and availability during all stages of the contract's life, as well as on timely and efficient after-sales assistance.

We make sure to always stay current on the new technologies offered by the market, with the aim of offering technologically advanced products and services to the customer.

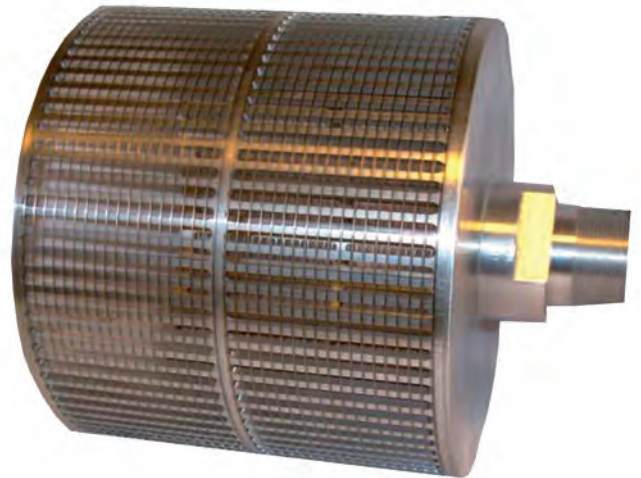
Comec is always ready to deal with a market and technology that are constantly evolving, which requires the ability to offer services at 360 degrees.

This commitment is expressed through a continuous process of updating, training and qualifying all personnel, but also through the use of modern and appropriate tools and equipment, as well as state-of-the-art informatics solutions.

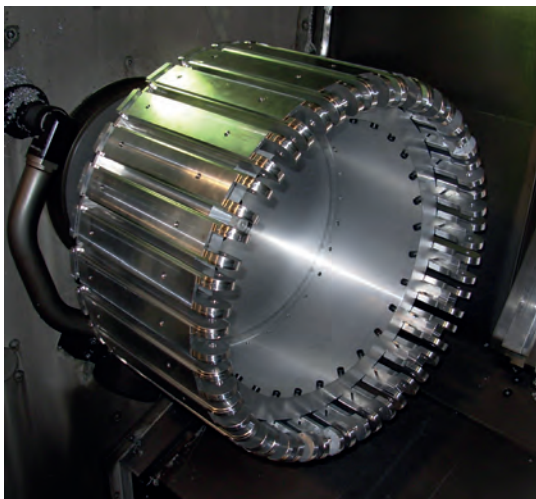
► PRECISION MACHINING

Comec offers its services to the international market for the production of small- and medium-sized batches of high precision parts.

Our machines are equipped with control probes that allow the dimensions to be checked while the piece is still in the machine, thus avoiding repositioning that would decrease the required precision. Furthermore, thermal probes on the principal axes prevent linear expansion from reflecting upon the precision of the piece being manufactured.



The use of certified materials from qualified suppliers is a guarantee for the origin of the raw material, the traceability of which can always be verified. We can provide finished parts with heat and surface treatments, working with contractors who treat the parts with the attention that Comec requires.



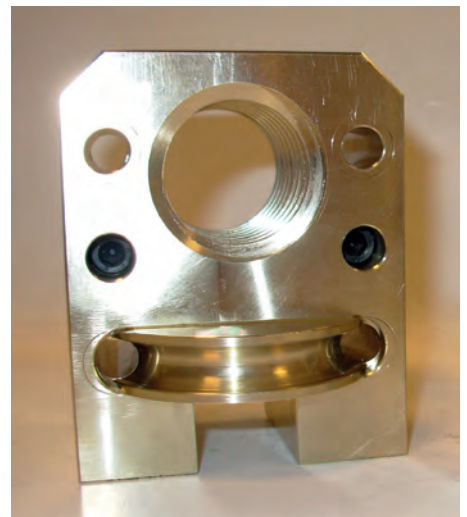
Our main activities regard:

- manufacturing of materials that we provide;
- manufacturing of materials and semi-finished pieces provided **by the client**;
- repairs and restorations of mechanical parts or machine parts, creating the design of the part if it is not available.

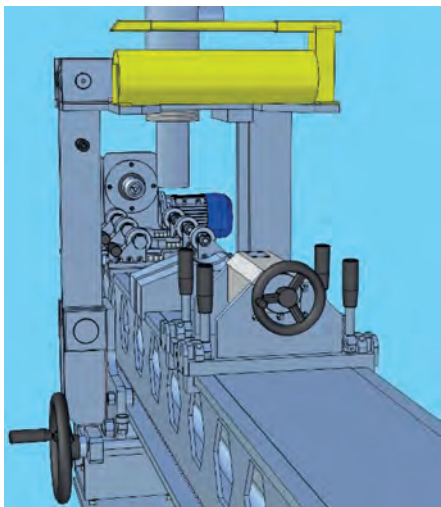
We can work with parts made of **iron, cast iron**, common, special, and stainless **steels**, and **non-ferrous** materials, including aluminum, bronze, brass, copper, and plastic products.

We can provide the mechanical pieces complete with **heat and surface treatments**:

- Hardening, induction hardening, nitriding, Tenifer processing, black nitriding;
- Chemical browning, manganese phosphating, electroless nickel plating, galvanizing, yellow tropicalization, and chrome and chromium nitride plating.



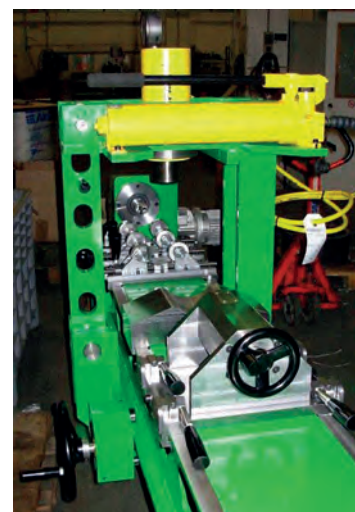
► EQUIPMENT



DESIGN AND CONSTRUCTION OF EQUIPMENT

COMEC has an internal design studio with qualified staff who can understand the customer's needs, resolve critical points, and provide suitable technical solutions.

The design is focused on the creation of new devices and the reconstruction of components or equipment parts.



One strong point is careful planning to ensure that the final result fully meets expectations. Verification and validation steps in the customer's presence are planned during the creation process.

The mechanical part or equipment can be accompanied by technical documentation and by parts lists to facilitate reordering and traceability.



REVIEW AND REPAIR OF EQUIPMENT

Starting with our customers' needs and specific problems, COMEC performs **industrial machine recovery** activities. **Revision and repair** interventions in the food, construction, typographic and machine tools sectors are given the same care that we give to products under construction. We agree upon the size of the intervention with the customer and formulate estimates. The mechanical parts that require **replacement** are created with our systems.

INDUSTRIAL BLADES SHARPENING

Our machine park includes an adjustment with a 3,100 mm long swivel plane for sharpening steel, HSS and carbide industrial blades for paper cutting and shearing, ice-shaving blades and blades for plastic product grinding mills.



► MACHINERY

MILLING



• DMU DMG 65 MONOBLOCK

Controlled 5-axis milling machine

- Ø840/735x650x560 work field with tilting rotary table
- 18,000 rpm HSK63 spindle
- Renishaw probe
- 90-seat tool magazine
- Quick set system for kinematic resetting of the machine axes



• DMG DMU 50

Controlled 5-axis milling machine

- 500x450x400 work field with tilting rotary table
- 18,000 rpm spindle
- Renishaw probe
- Quick set system for kinematic resetting of the machine axes



• MAZAK VTC300II

Controlled 4-axis high speed CNC milling machine

- 1740 x 760 x 660 work field
- Renishaw probe
- pallet change partition

CNC TURNING



• OKUMA B300 MULTUS

CNC milling lathe with milling head

- work field: dmax 620 Lmax 900
- bar passage 70



• OKUMA LB300 SPACE TURN

CNC lathe with motorized milling heads

- work field: dmax 500 Lmax 1000
- bar passage 70



• OKUMA LB15

3-axis lathe

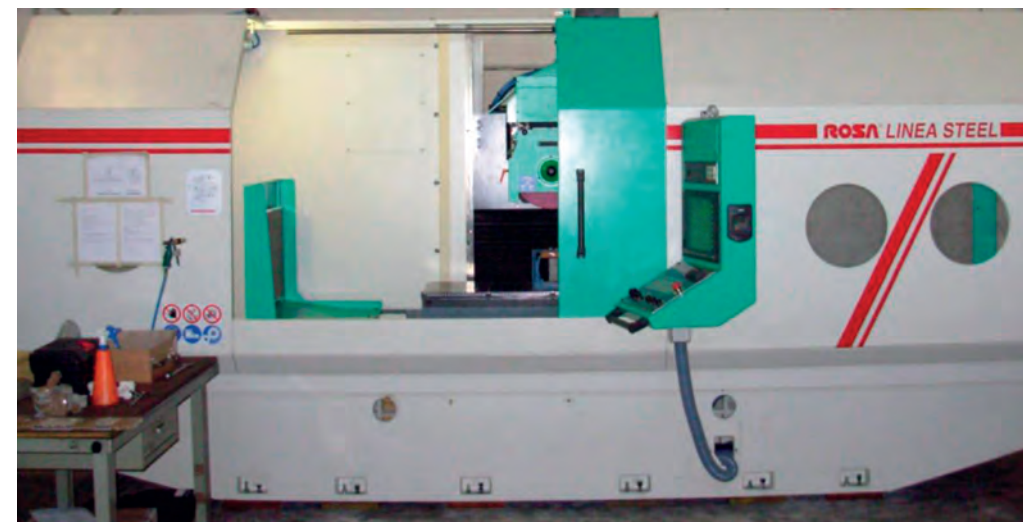
- work field: dmax350 Lmax 500
- bar passage 47

• OKUMA LB15II

3-axis lathe

- work field: dmax 510 Lmax 600
- bar passage 70

GRINDING



• ROSA LINEA STEEL 13.7

- CNC automatic grinding machine with encoder and optical lines, grinding wheel/profile management packet
- work field: 1500 x 750 x 600

• MVM K250

- grinding machine with tilting table
- work field 3100x150

• TACHELLA

- universal grinding machine
- work field: 400x150

• RIBON RUR 1000

- round grinding machine
- work field: Dmax300

ADJUSTMENT/OTHER MACHINES

TORNITURA MANUALE

• GRAZIANO SAG14

• COLCHESTER MASTIFF1400

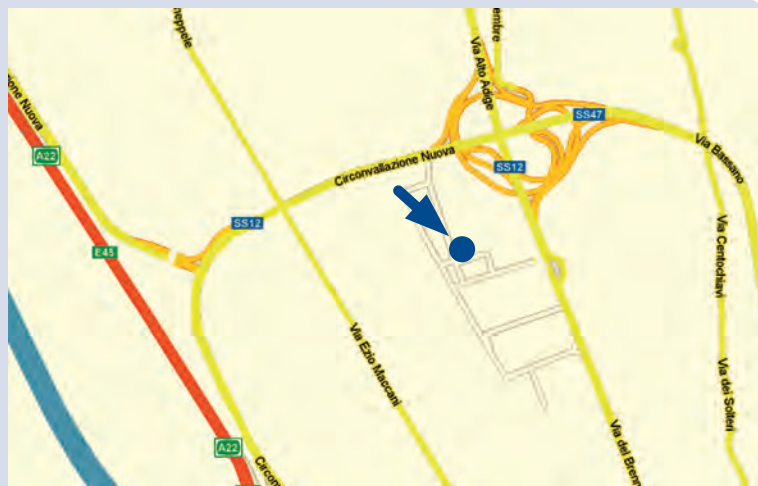
- work field: Dmax 600 – Lmax 2000
- bar passage 92

FRESATURA MANUALE

• TOS FK25 CN

CN manual milling

- Workfield: 720x350
 - CAMS250 slotting machine
 - BIANCO manual saw, T.C.M. automatic saw
 - LAMPUGNANI sandblasting
 - ITALTRAPANI drill, RIGEL8 drill, SERRMAC drill
- Welding, custom cutting of linear guides...



Comec S.r.L. Via E. Sestan, 30 ■ 38121 Trento ■ Italy
Tel. +39 0461 826259 ■ Fax +39 0461 436512
Indirizzo email export: export@comec.it
Indirizzo email Italia: comec@comec.it
www.comec.it
C.F. e P.IVA /VAT/UID: 01166630226