



ING. BERTOLOTTI & C. S.a.s. ...dal 1949 carpenteria meccanica

Let's make it real
together



Mechanic carpentry Ing. Bertolotti & C.



A family history

**Active since 1949,
Ing. Bertolotti & C. is
specialized in
construction steel,
light alloys and
stainless steel
manufacturing,
machining and
welding.**

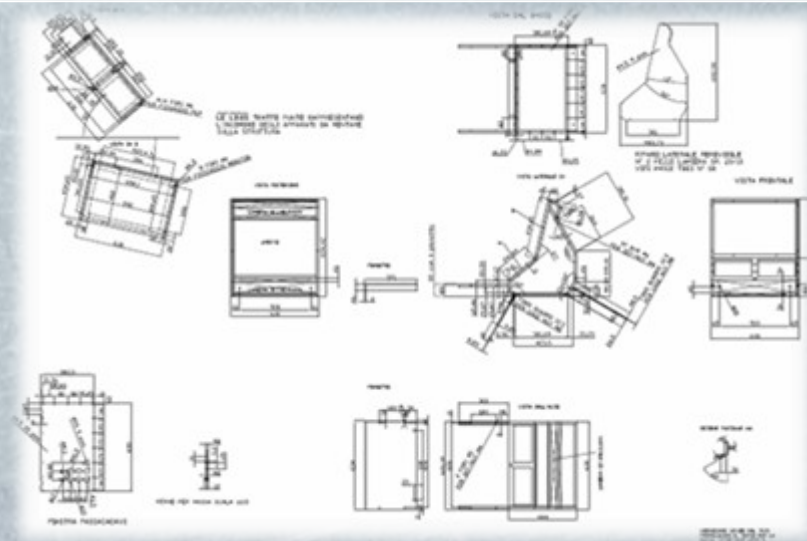




From cradle to grave



**Ing. Bertolotti
provides custom
solutions to its
customers to
produce special
series, small and
medium series.
It covers all
production process
stages, from
development and
design to**

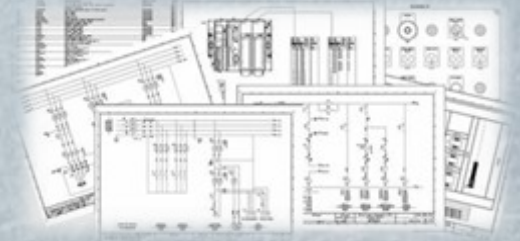




Production process



1)Development and design



2)Machining



3)Welding and assembly



4)Surface treatments



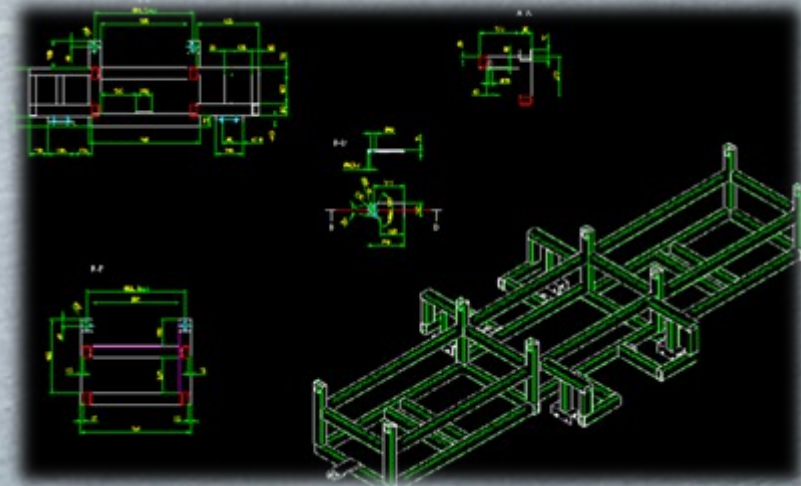
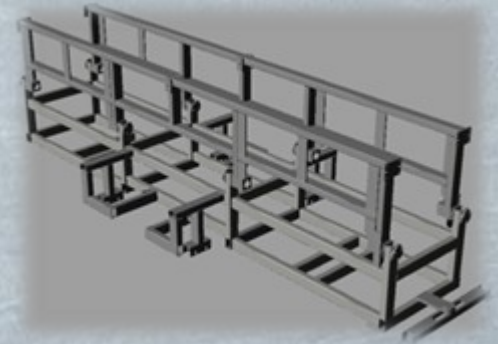
5)Quality and certificati



5 Development and design



- **Technology consulting for process material utilization and construction time optimization**
- **Custom solutions development**
- **Product life time optimization**

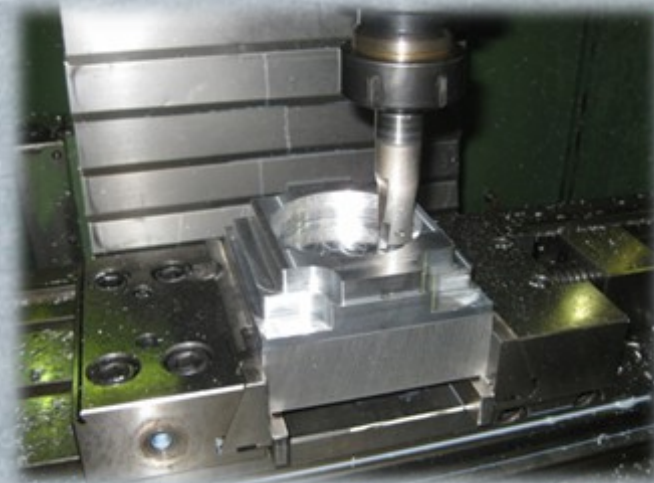




2/5 Machining



- **CNC milling**
- **Cold forming (bending, shearing)**
- **Bending and curving tubular**
- **Forming and hydroforming with soul**





3/5 Welding and assembly



- **Electric arc welding and spot welding TIG-MIG-MAG**
- **Certified welding processes**
- **Mounting equipment calibrated**
- **Assembly of threaded studs and rivets**
- **Licensed welders**
- **Static and dynamic subsystems assembly**

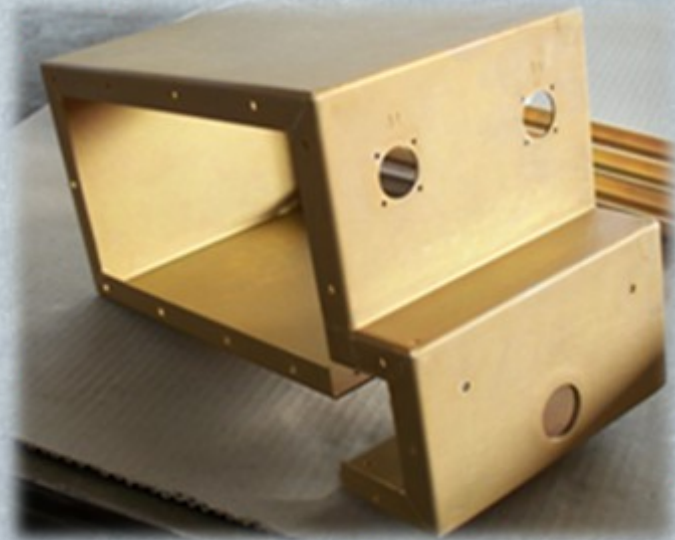




4/5 Surface treatments



- **Painting**
- **Galvanic treatments**
- **Heat treatments**
- **Sandblasting**
- **Insulators**
- **Special processing**
(ex.ALODINE 1200)



/5 Quality and certification



Italia

- **Certified materials**
- **Welding process certificate**
- **Non-destructive penetrant liquid, RX and verification welds certificates**
- **Special processes and surface treatments certificates**
- **Certified company UNI-EN-ISO 9001:2008**





Field of applications



1)Aviation & electric

2)Space

3)Boating

4)Automotive & transportation

5)Automation & special machine

6)Food industry and shop





1/6 Aviation & Electric



**Console board
equipment installed on
aircrafts**

- **Beechcraft**
- **ATR 42/72**
- **P 180 PIAGGIO**

**Ground TPS console for
test systems in the EFA
program**

- **Focus on military standard
painting, ALODINE 1200
and silk-screen printing**





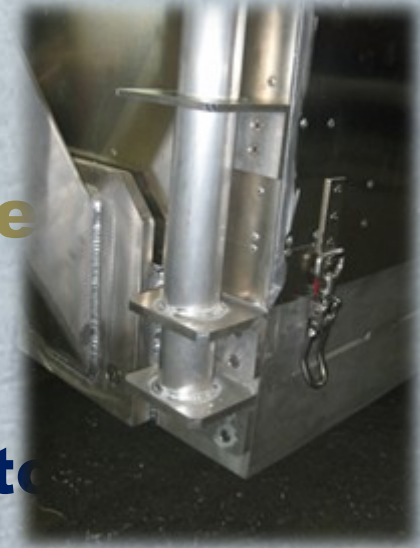
2/6 Space



focus

Container for sun screen satellite

- Pressurized
- Insulated
- Aluminum thickness from 4mm to 20mm
- 75 m of continuous welding
- Dimensions: 4.5 x 2.5 x 3 meters



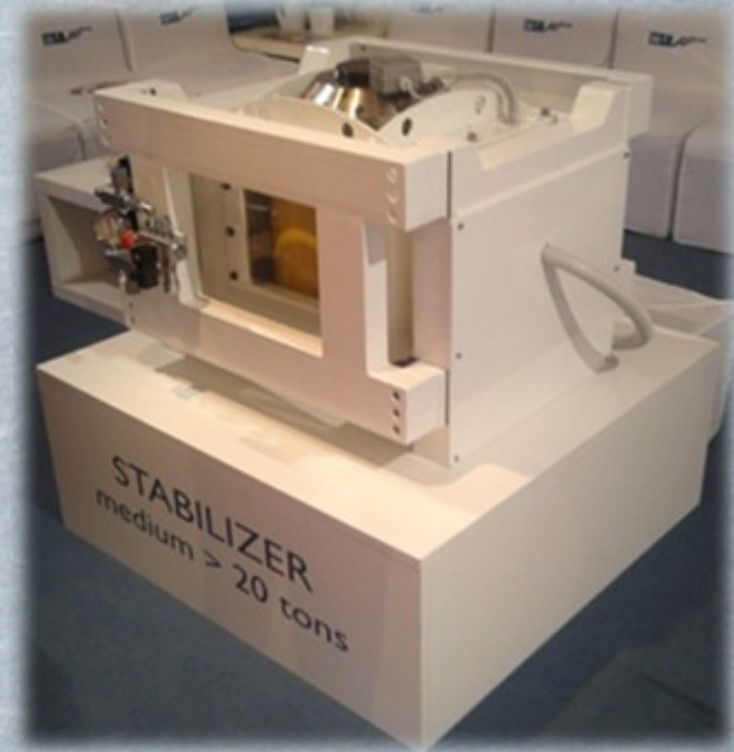


3/6 Boating



Gyro nautical stabilizer

- **High strength steel structure**
- **High strength continuous welding**
- **Full penetration continuous welds**
- **Tailor made aluminum alloys solutions**





4/6 Automotive & transportation



focus

Grab handles and support

- **Bending tube with core**
- **Powder coating surface finishing**
- **Special packaging management for local and intercontinental shipments**





5/6 Automation & special machines



Custom solutions for safety of forklifts special

- Custom support to optimize the technological aspects, focusing on safety and ergonomics

Stand for machine tool

- Structural welds
- Prototyping stage design assistance





6/6 Food Industry and Shop



Unsplit Conveyor group, slaughtering industrial plant

- Steel and plastic sliding parts
 - Mechanical devices installations
 - Aesthetic surface finishing
 - Food industry certified materials
- Benchwork equipped for
ice-cream shop

- Optimization of product and prototyping process
- Aesthetic surface finishing

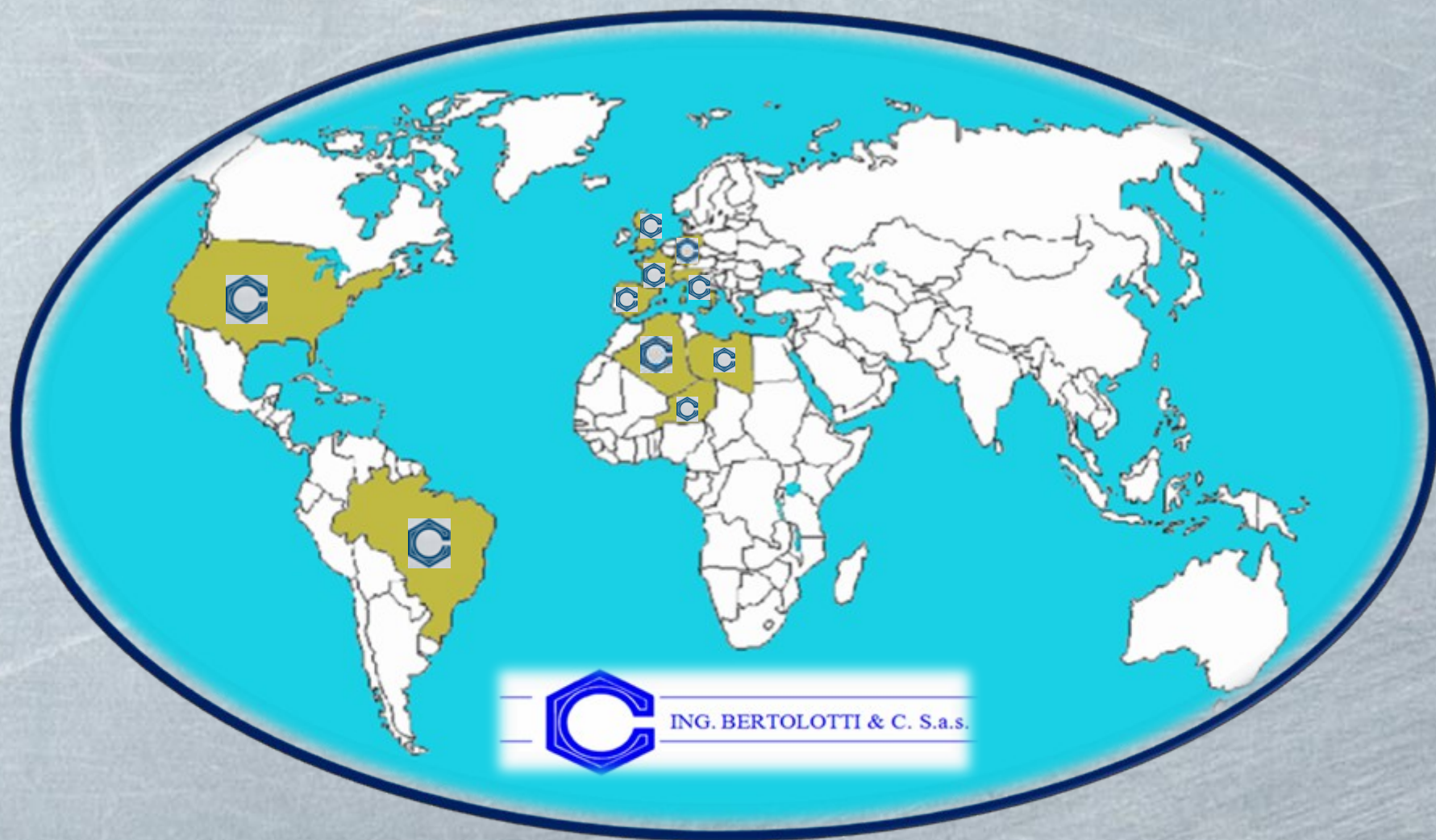




Key customers



 you, wherever you are





Contacts



ING. BERTOLOTTI & C.

Corso Cuneo n°47 - 10078 Venaria (TO)
Telefono e Fax +39 011424 07 88

info@ing-bertolotti.com
www.ing-bertolotti.com