

Industry specialized in:

- Trucks division
- Fork lift division
- Construction division
- Agricultural division
- Harvesting division





Headquarter & Production site
via Emilia Ovest 70
Castelfranco Emilia (MO)
Italy

O.M.G. SpA

☎ +39 059.91.20.811

☎ +39 059.91.20.899

✉ info@omgmeccanica.it

direzione@omgmeccanica.it

commerciale@omgmeccanica.it

qualita@omgmeccanica.it

🌐 www.omgmeccanica.it



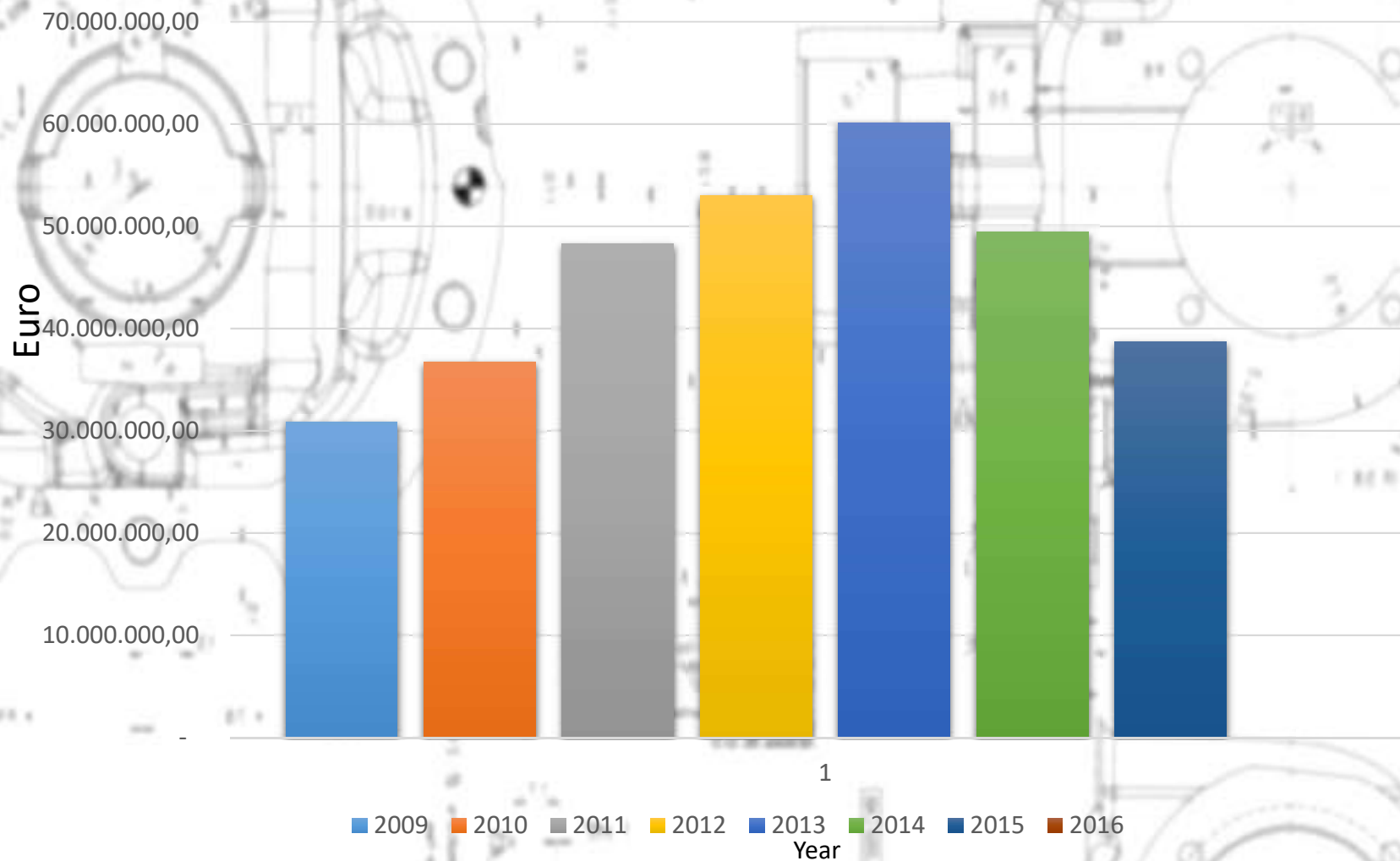
11.000 mq of cover area





Turnover

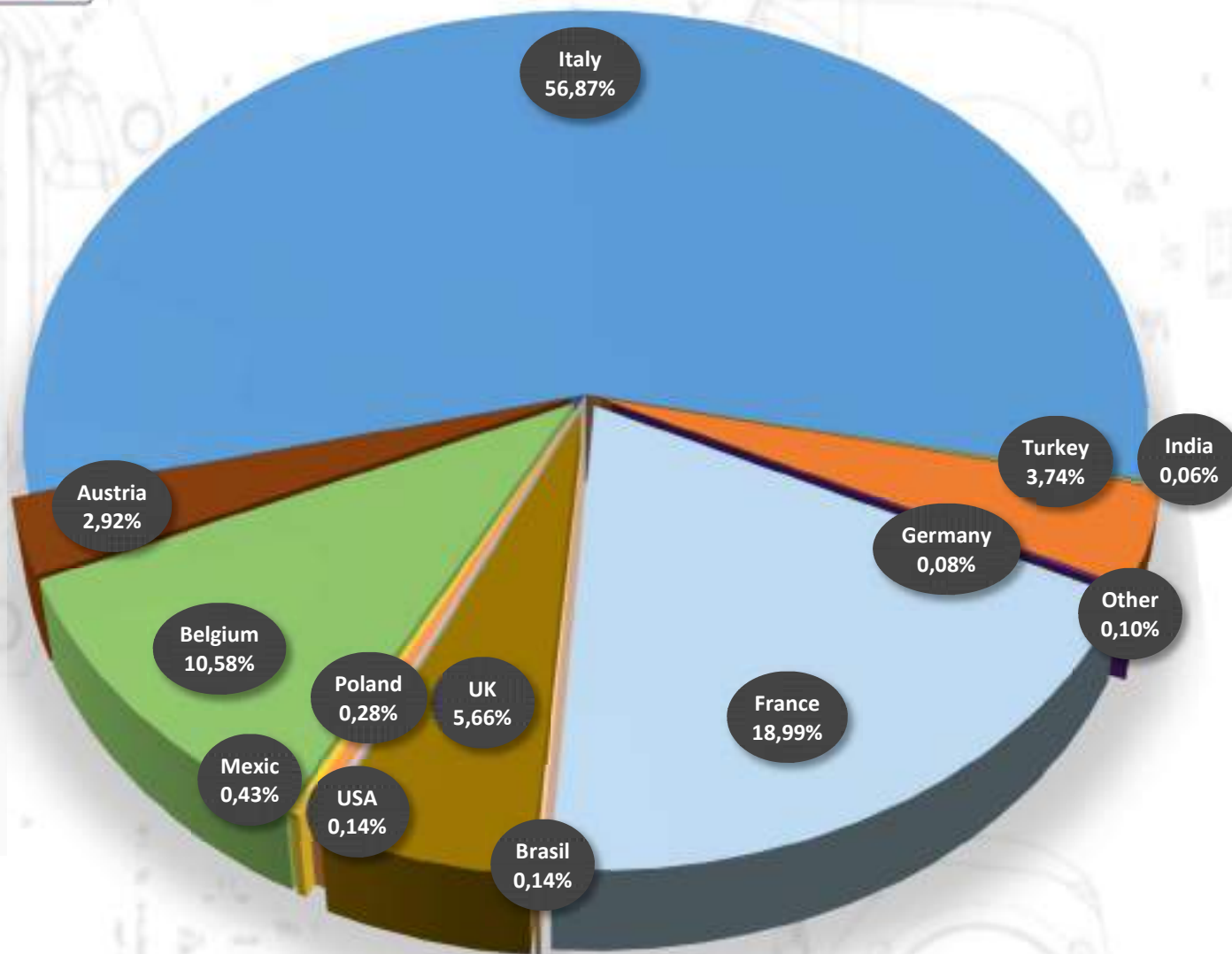
Turnover (year/€)



Number of employees 167

OEM and intercompany

- Turkey
- Germany
- France
- Brasil
- UK
- USA
- Mexic
- Poland
- Belgium
- Austria
- Italy
- Other
- India



<i>DIVISION</i>	<i>PERCENTAGE SERVING</i>
Agricultural division	86%
Truck division	7%
Construction division	2%
Fork lift division	2%
Harvesting division	2%
Other	1%

Clients (*)



(*) All products or trademarks listed in this slide belong to their respective owners.



Born in 1926 as a constructor of agricultural machine tools, **OMG Meccanica S.p.A.** is nowadays a strong and well-established entity which operates in many sectors of the leading industries. Introduced in the textiles and motor component sector in 1946 it improved the working and finishing process, aiming then, at a necessary productive expansion. In 1948 it was decided to produce sharpeners and milling machines. Afterwards in 1950 the production of tractors mechanical products began.

Thirty years later, **OMG** started to export its own items and within a few years it has expanded worldwide, operating in agricultural machines, motors and industrial vehicles range.

OMG is distinguished as a leader for multinational giants, great manufacturers and third parties in the sector of high precision and quality mechanical products realization.

It disposes of a modern, able and qualified staff, possessing the most advanced and flexible technological machines, which offer infinite service solutions.

The Company is determined to continue the production expansion guaranteeing a consolidated service in the world of mechanical logistic, taking care of the particulars for each phase of the production process.

The activity of over 160 specialized persons, in the productive and the projecting and testing division, makes the Company able to supply and satisfy every productive and commercial requirement.

The modern and computerized running of the production allows at the item to pass through all the working phases in accordance with the strict quality standard of **UNI/ISO**.

OMG is ISO TS 16949:2009 certified starting from 2016 cert. num. IATF 0252968

Dimensional works

Tornitura diam. / Turning lathe diameter	mm 180
Tornitura lunghezza max. / Turning lathe max lenght	mm 2200
Dentatura modulo M / Teeth-Hobbing machine M module	≤ 6
Dentatura Lunghezza max / Teeth-Hobbing machining max lenght	mm 2100
Rullatura Grob modulo M / Teeth Grob rolling machine M module	≤ 3
Rullatura Grob Lunghezza max / Teeth Grob Rolling machine max lenght	mm 1600
Brocciatrice verticale / Vertical Broaching machine max diameter	mm 110
Brocciatrice verticale / Vertical Broaching machine max lenght	mm 2200
Pressa / Press machine	Ton 300
Centri lavoro orizzontali-verticali / Horizontal vertical machine centre	mm 1200x800x800
Tempra induzione / Induction hardening Threatment	Freq High, medium, low frequency
Rettifica Tipo 1 Diam. Max / Grinding machines type 1 - max diameter	mm 160
Rettifica Tipo 1 Lungh. Max / Grinding machines type 1 - max lenght	mm 1200
Rettifica Tipo 2 Diam. Max / Grinding machines type 2 - max diameter	mm 60
Rettifica Tipo 2 Lungh. Max / Grinding machines type 2 - max lenght	mm 2000
Lavatrici / Washing machines	

Quality system controls

3D Dea measuring



Quality system controls



Quality system controls



Quality system controls

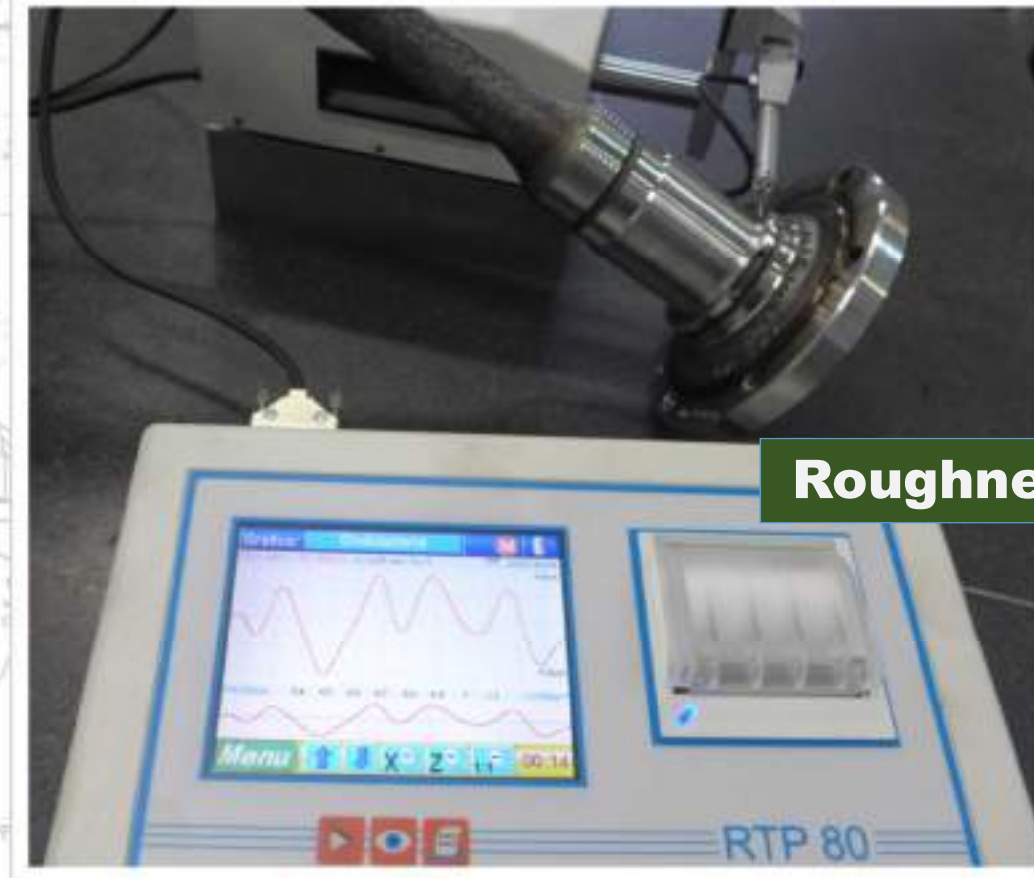
3D Laser scan



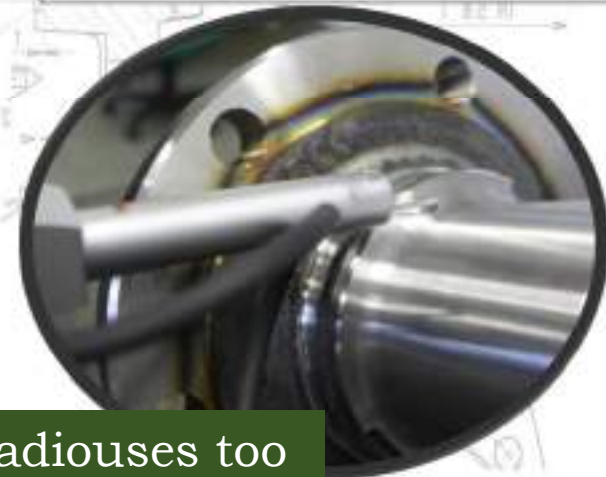
Ultrasonic metal testing



Quality system controls



Roughness tester



With parameter Rz, Rtm, Rsk, ...Able to test radiouses too

Quality system controls

**Measurement of
thread profile**

Profilemeter

**Measurement of
spalling**

Drawing software 3D
SpaceClaim reader PROE and
SolidWorks files

- *Horizontal and vertical turning lathe**
- *Horizontal and vertical machining centre CNC**
- *Hobbing and hammering toothing machines**
- *Induction hardening and straightening machines**
- *Grinding machines**
- *Washing machines**



Machine centre able to work bars in all condition.
The lathe is equipped by 20 linear axis, marposs and execute turning, drilling, milling, threading and gear cutting operation by the gear hobber. With automatic loader this centre is complete, versatile and able to excute several machining operations all together reducing the cycle time of 50%

CARATTERISTICHE TECNICHE - TECHNICAL FEATURES

Passaggio barra max / Max bar diameter	mm	54
Lunghezza max. barra / Max bar lenght	mm	2400
Caricatore barra capacità / Loader bar capacity	kg	2000
Caricatore barra lunghezza / Loader bar lenght max	mm	6400
Diametro foro mandrini / Spindle hole diameter	mm	58
Potenza mot. mandr. Fantina / Power motor spindle headstock	Kw	12/15
Potenza mot. frontale / Power motor frontal	Kw	7,5
Potenza mot. utensili rotanti / Power motor motorized tools	Kw	2,4
Sezione utensili / Tools section	mm	20 x 20

Horizontal and vertical turning lathe



Horizontal and vertical machining centre CNC



Horizontal and vertical machining centre CNC

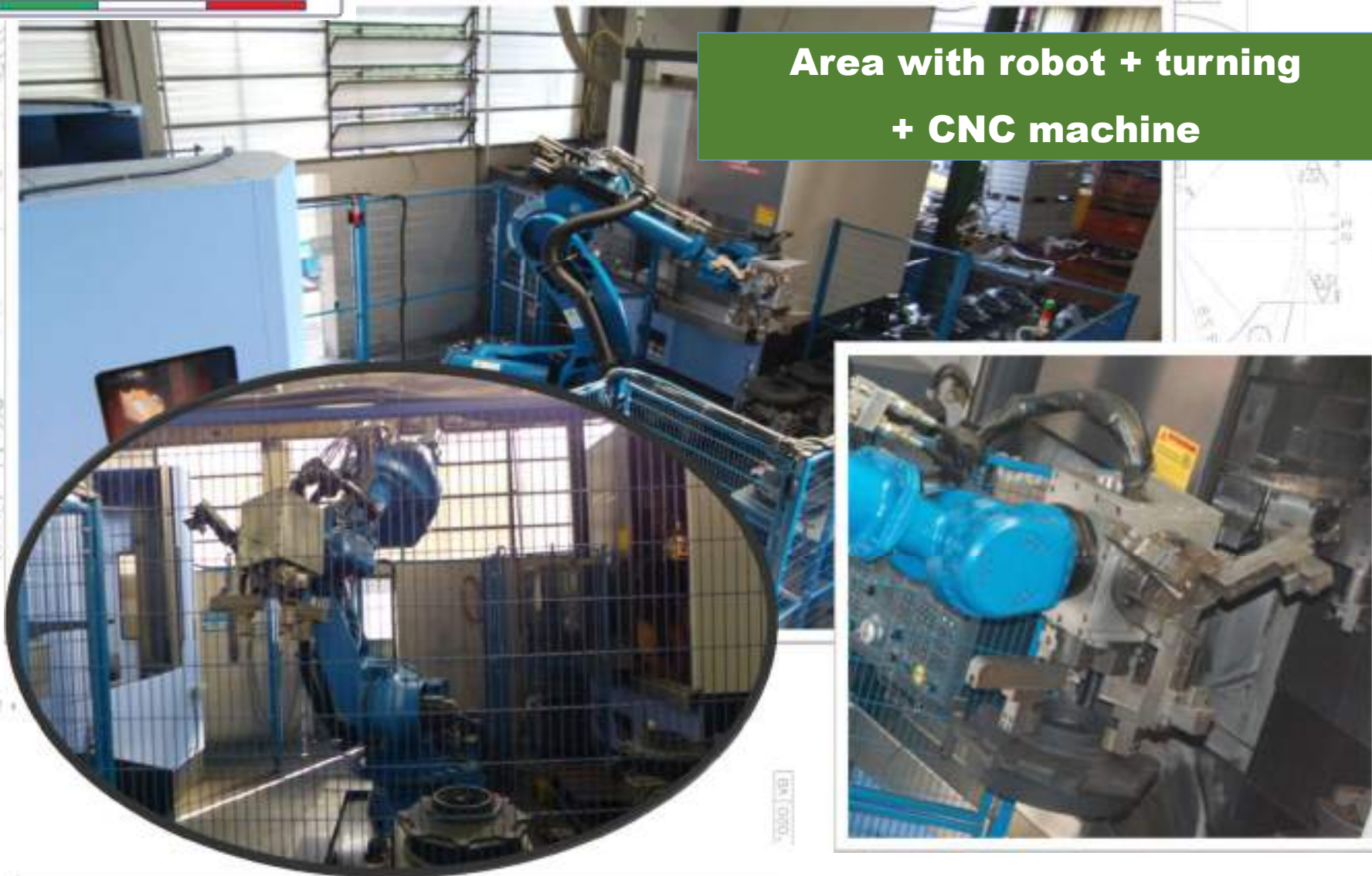


Hobbing and hammering toothing machines



Robotized area

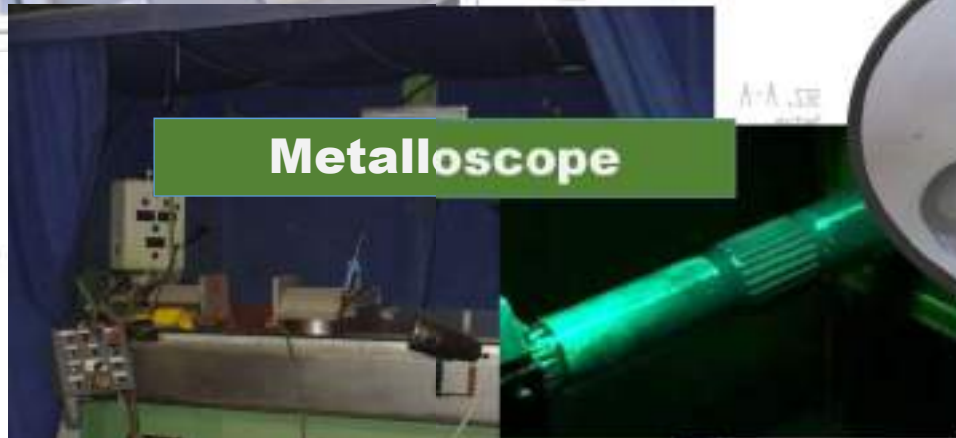
**Area with robot + turning
+ CNC machine**



Induction hardening and straightening



Metallographic Laboratory



Metalloscope



Metallographic Laboratory



Grinding machine



Washing machines



BA 0520

CAST IRON:

Flange forks
Wheel hubs
Cylinders
Wedges for bar axles
Supports
Brake pistons
Spacers
Planetary carriers
Steering knuckles
Differential cases
Hand brake supports
Various machined castings
in GGG90

STEEL FORGING:

Shafts
Forks
Flanged shafts (with bolts)
Spindles
Pto shafts
Levers

BARS:

Clutch shafts
Transmission shafts
Rear axles

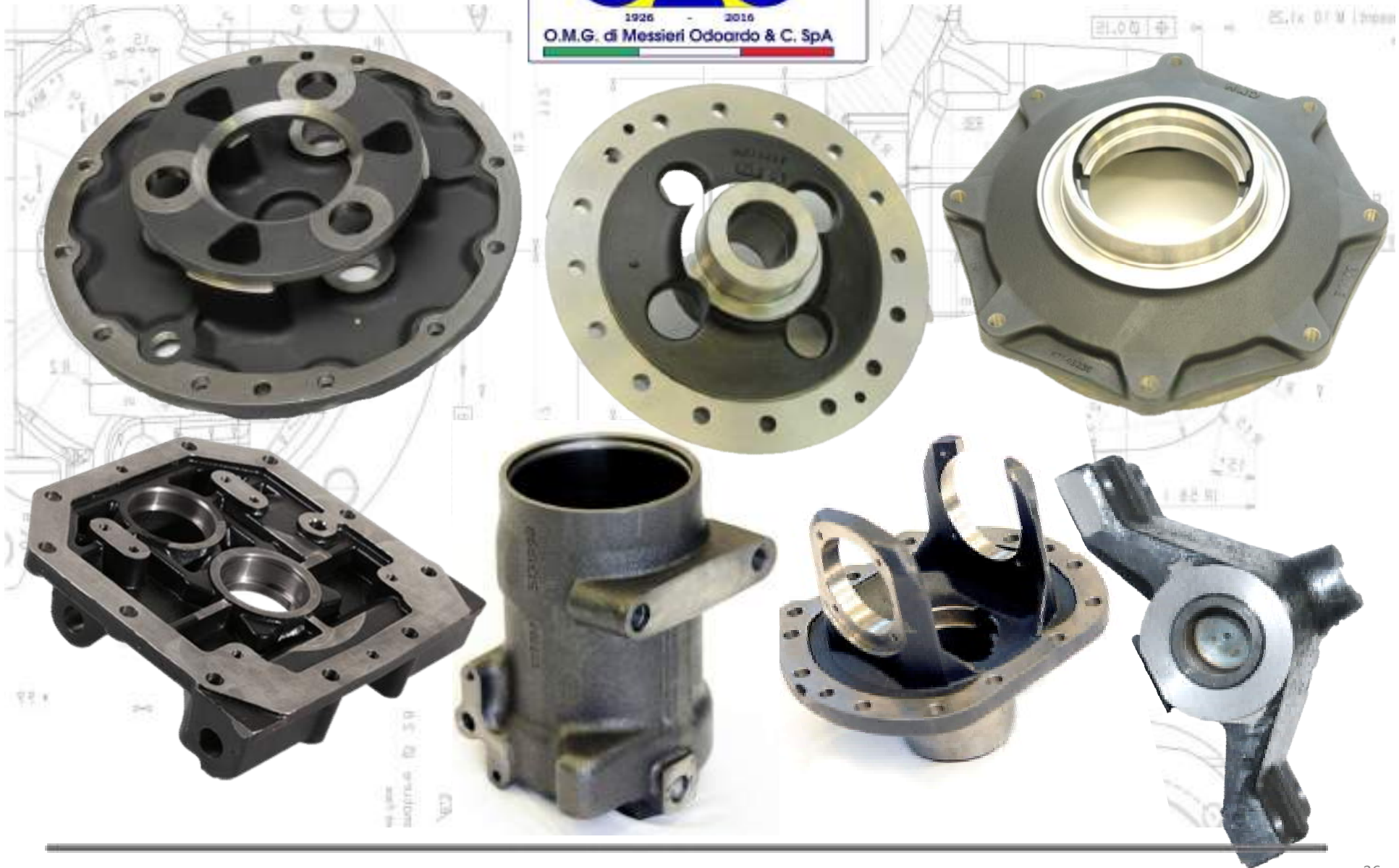


Forging parts





Casting parts



Casting parts





Casting parts



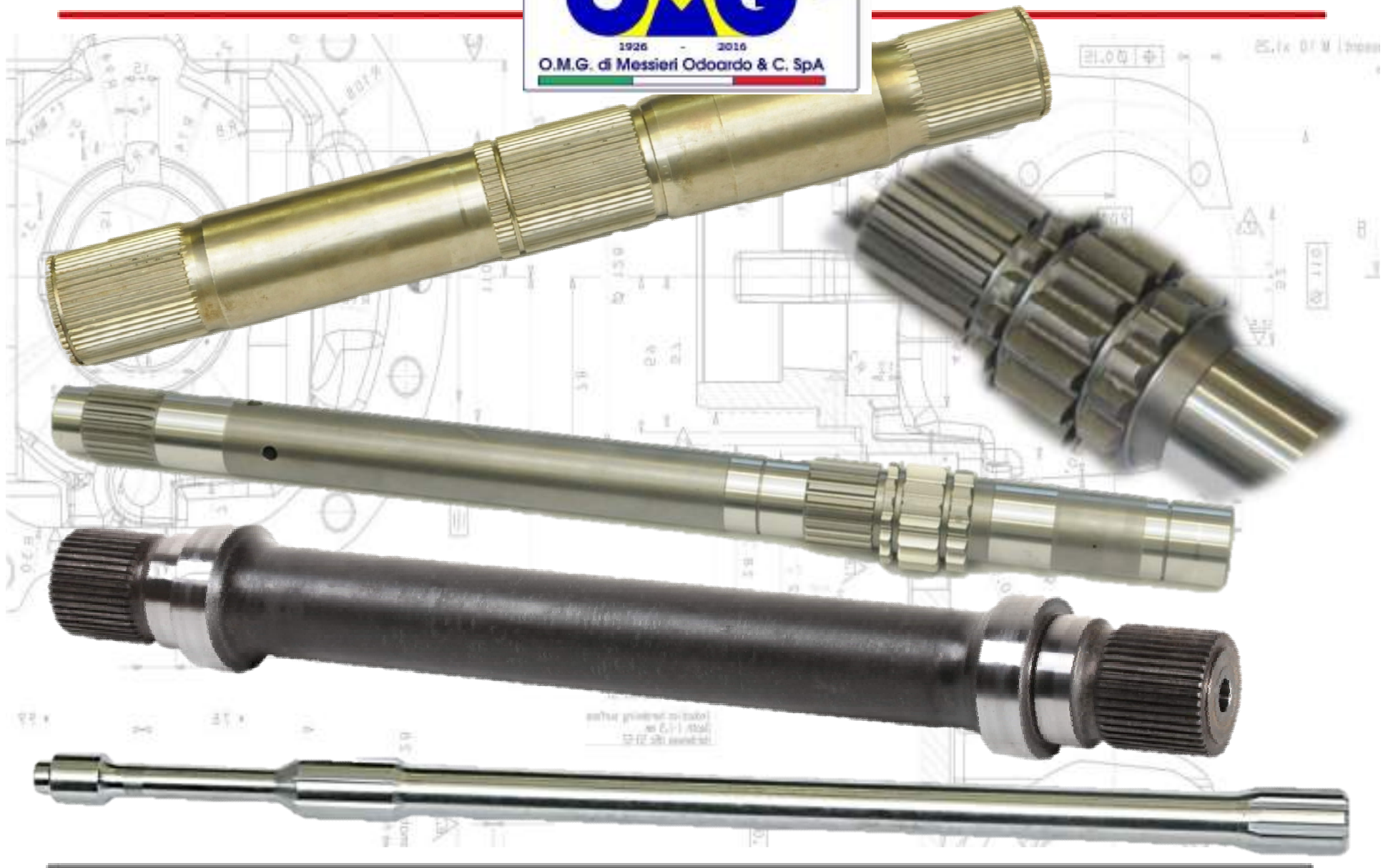


Casting parts





Steel shaft



Steel shaft





Forging parts

**Involute gear
grinded**

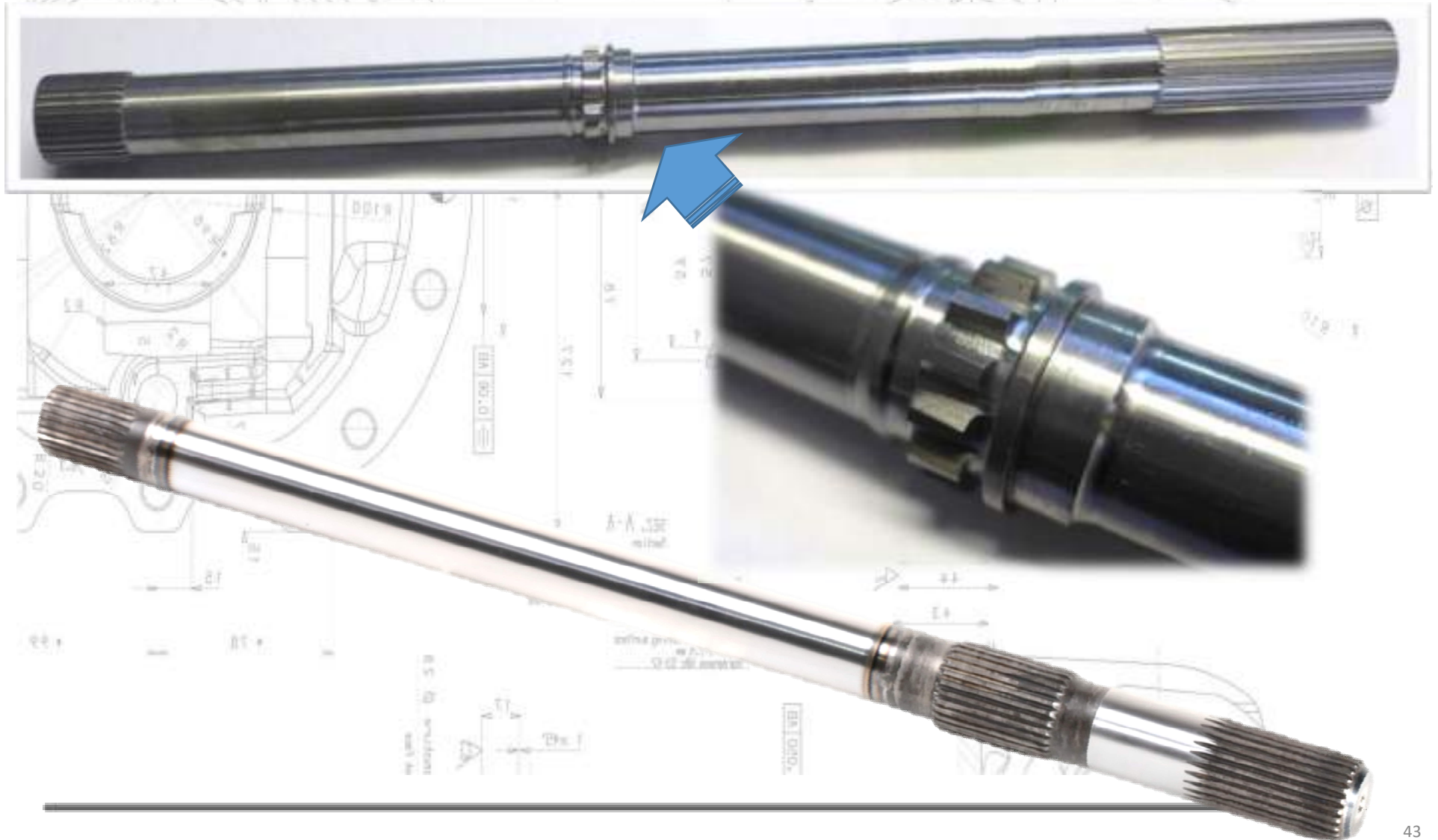


Shaft + sleeve





Forging parts





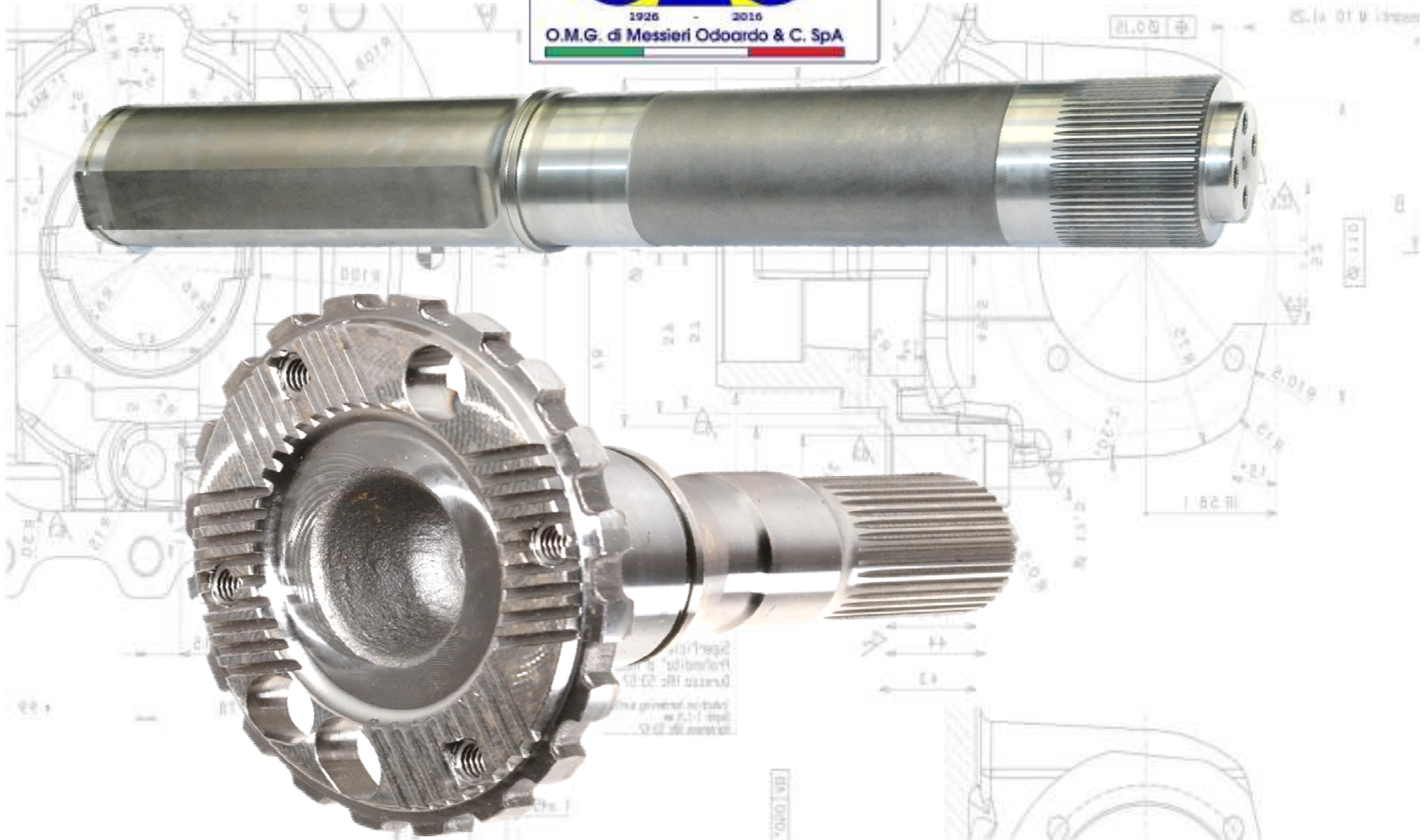
Forging parts



**Flanged shaft +
columnnet**



Forging parts





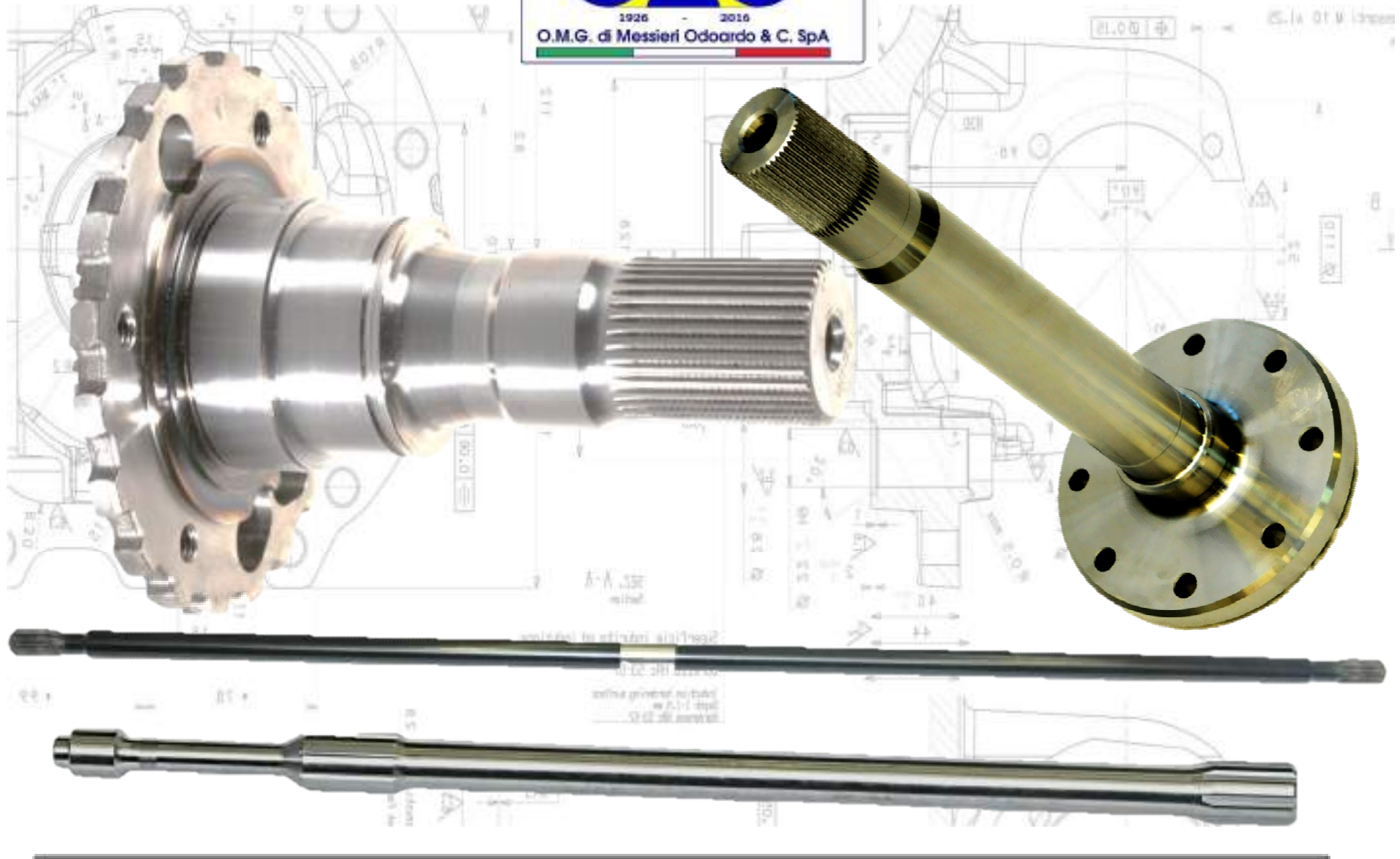


Forging parts





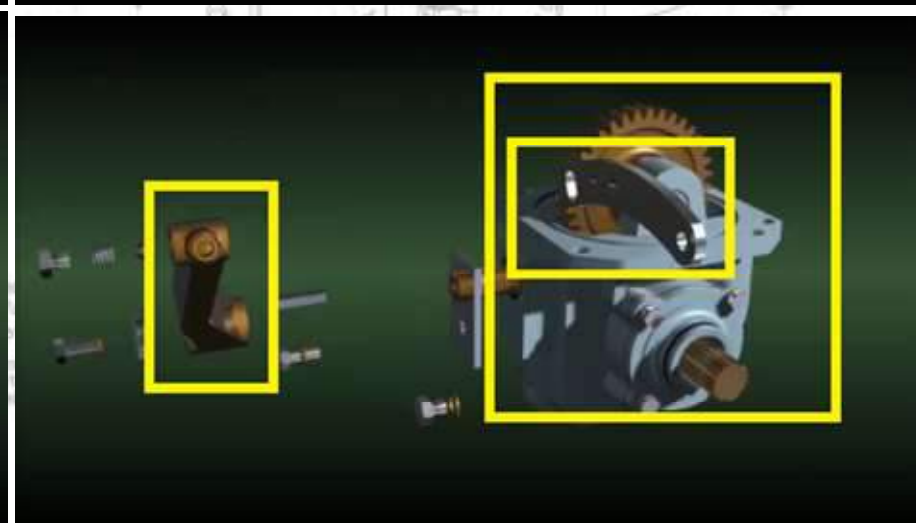
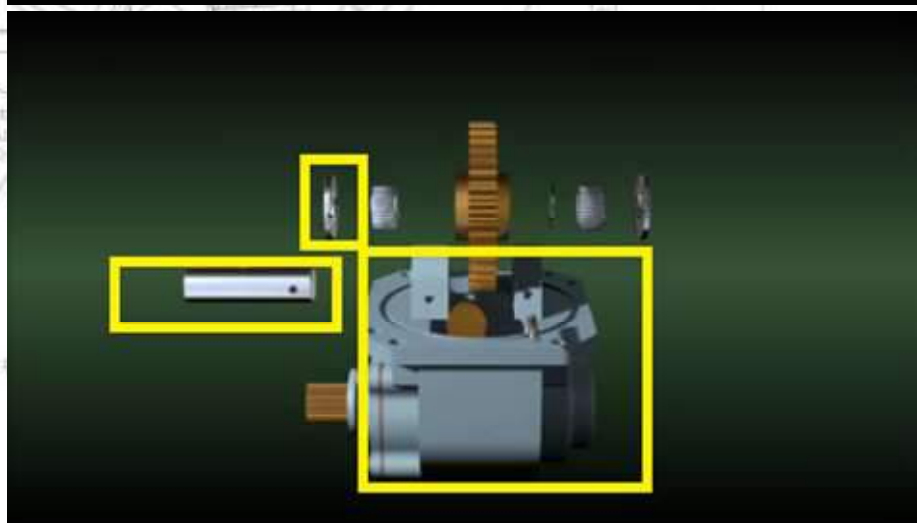
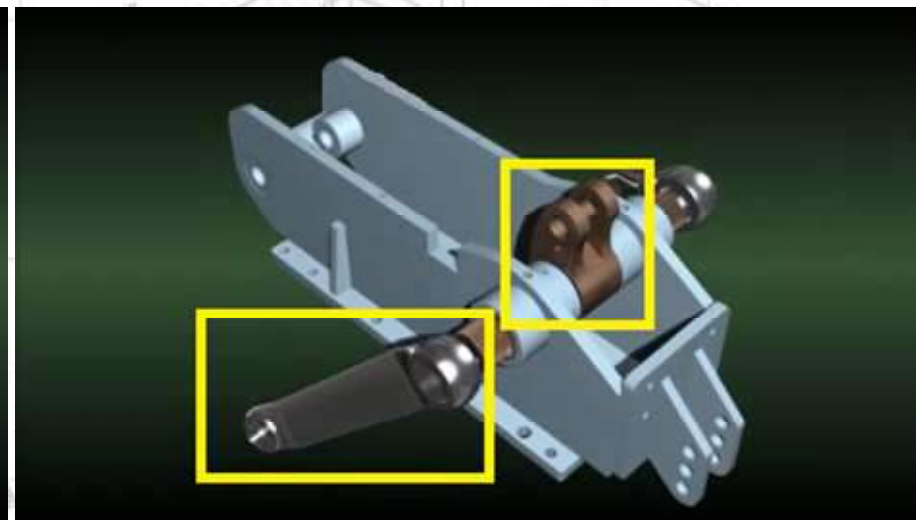
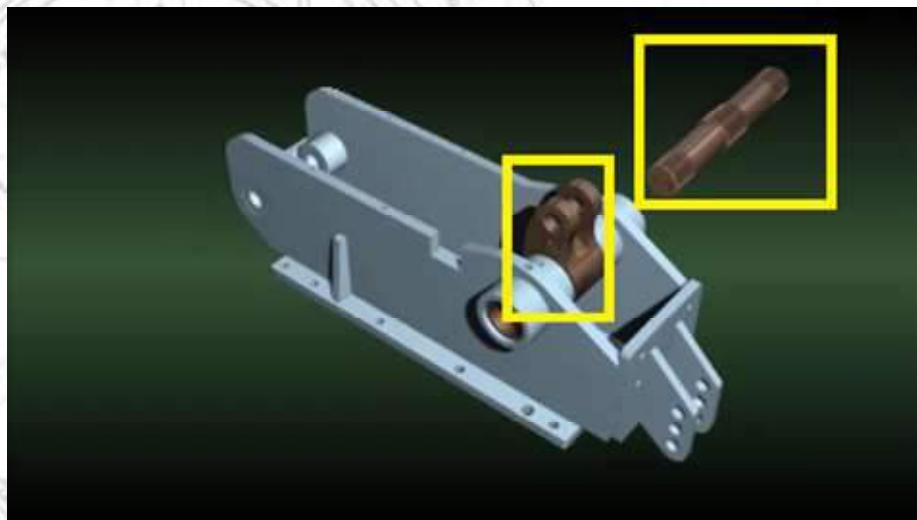
Forging parts

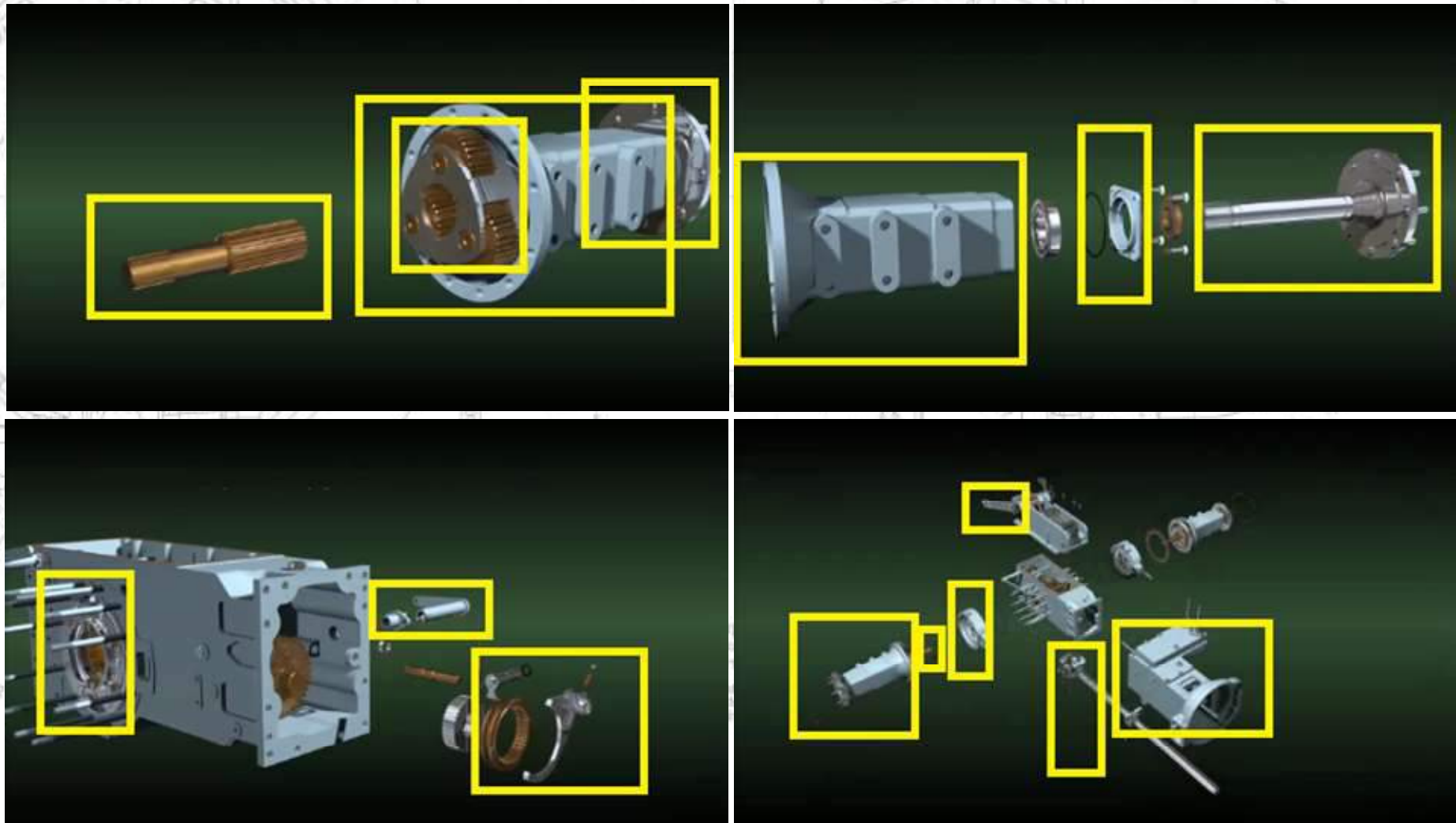


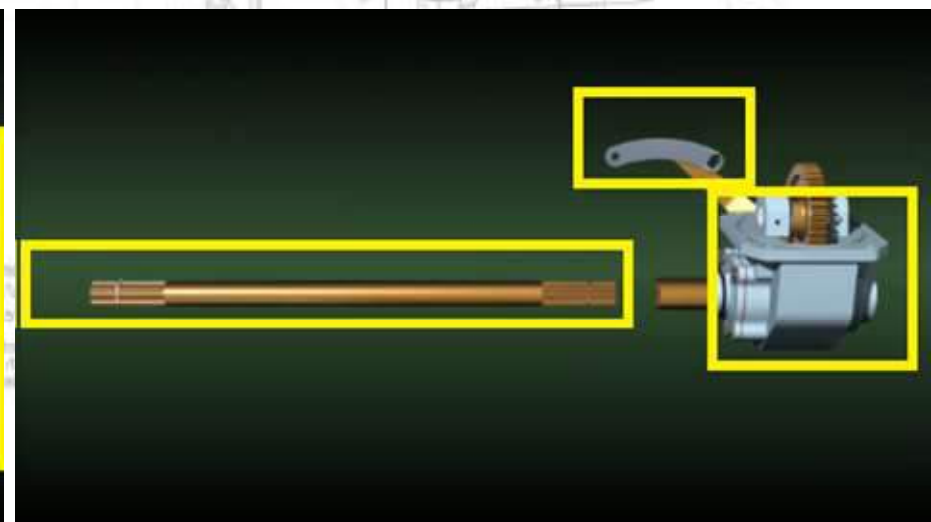
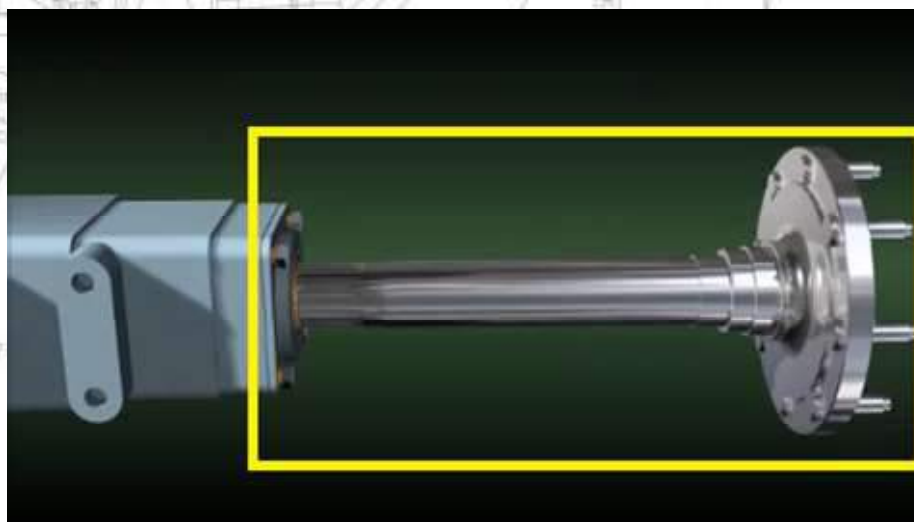
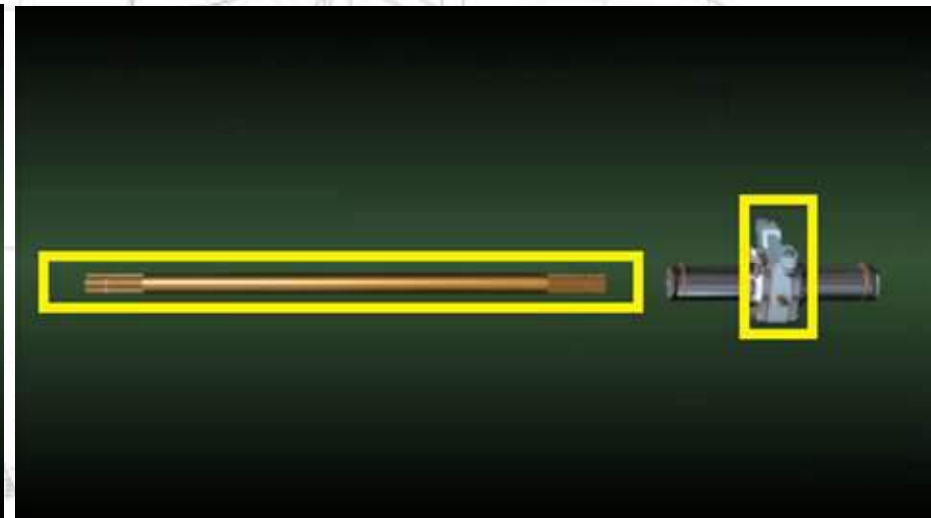
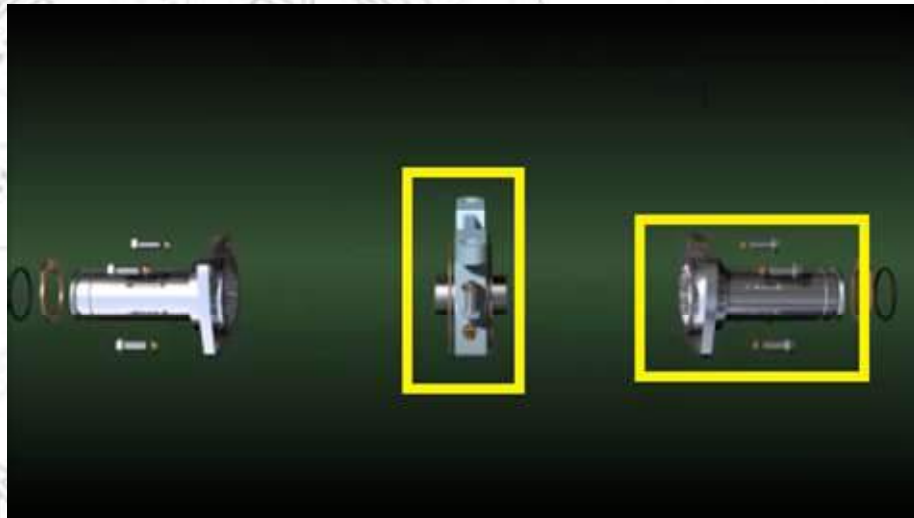


Forging parts











1926 - 2016

O.M.G. di Messieri Odoardo & C. SpA

