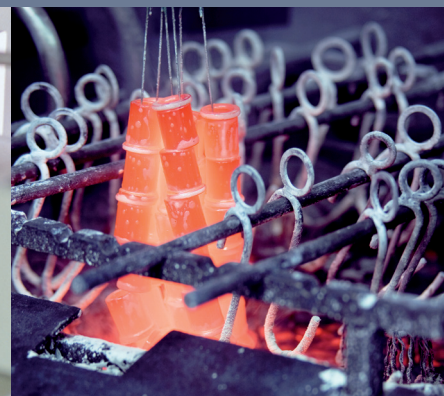
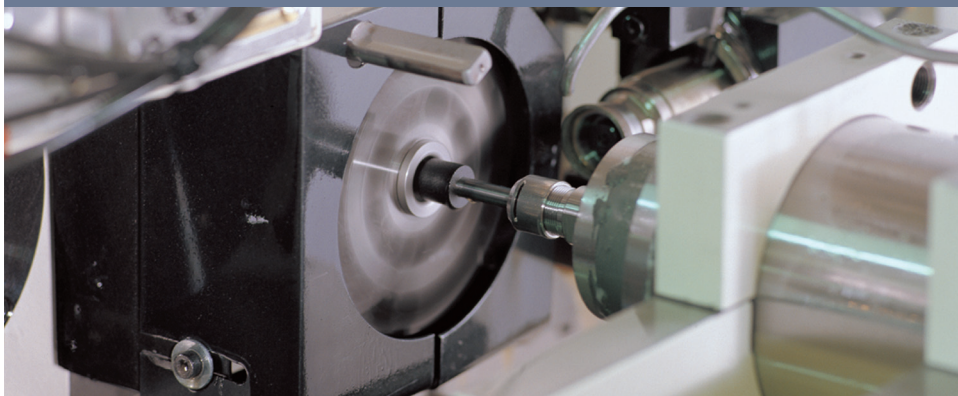


Precision Parts for Specialists



Tradition and Innovation.

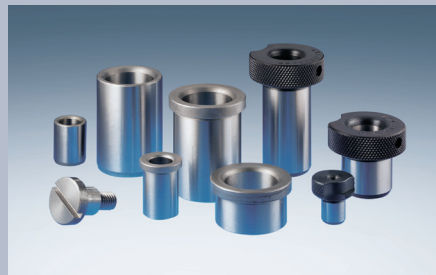
Since 1934, Blohm has established an international reputation for highest precision in manufacturing drill bushings, demanding special parts according to customer specifications as well as standard parts for manufacturing stamps and dies. Customer-focussed product development, highest quality und on-time delivery form the basis of the corporate philosophy, which has internationally acknowledged Robert Blohm GmbH as manufacturer of precision parts. Blohm, as a producing system supplier, enables customers to schedule their material requirements, saving both time and money.



Blohm produces a huge variety of different precision parts, tools und complex special parts just in time and for international markets. The complete process from manufacturing to distributing the product is perfectly scheduled. This gives Blohm customers an immediate flexibility in supply while simultaneously reducing their storage costs.

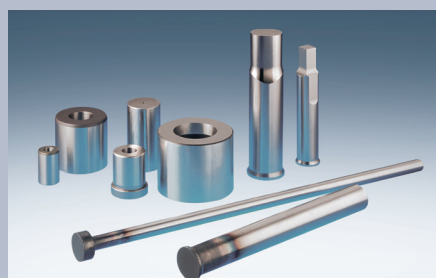
Drill bushings according to DIN

Blohm uses state-of-the-art manufacturing technology and highest quality standards for producing drill bushings. Blohm bushings are tempered and wear-resistant. They are made of best quality steel and are finished within tolerance.



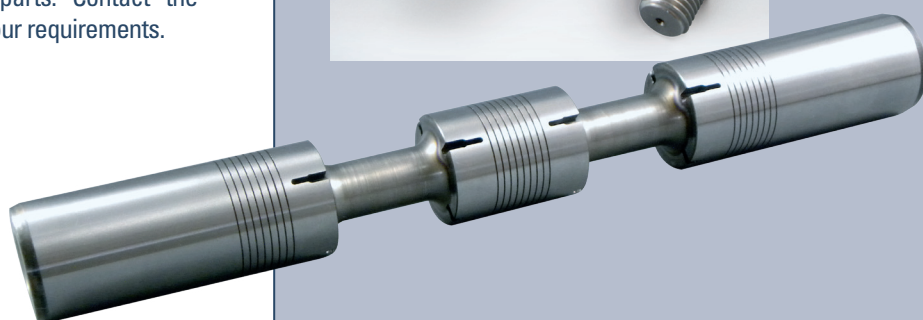
Standard parts for manufacturing stamps and cutters

The manufacturing of stamps and dies nowadays often involves the integration of pre-fabricated, exchangeable and often also very complex cutting elements. Blohm has specialized on producing demanding high-precision cutting elements.



Customized special parts

Customisation is emphasised at Blohm. Thus, Blohm often realizes very special orders according to customer specifications as well as demanding special parts. Contact the expert team to discuss your requirements.



Carbide tools

Blohm carbide tools are made of finished carbide metal for the construction of tools and jigs and are unique in terms of accuracy in geometry, position and size. Blohm carbide tools achieve best performance in service life and stroke speed.



Standard components for jig construction

For years, standard parts for engineering and manufacturing jigs, tools and machines have been part of Blohm's product variety: Spring-loaded thrust pieces, workpiece construction, ball pressure screws, ball lock pins, locking bolts, machine components, elements for tensioning and operating, clamping levers.





NORMTEILWERK ROBERT BLOHM GMBH

Bahnhofstraße 20	D - 21514 Büchen
P.O. Box 12 40	D - 21514 Büchen
Phone	00 49 (0) 41 55 - 80 08 - 0
Fax	00 49 (0) 41 55 - 81 11 - 31
info@blohm-gmbh.de	www.blohm-gmbh.de



Quality, Precision
and Future

