



**RECA srl**

**Company specialized in the processing of  
the metal tube for all its applications.**

[www.reca.it](http://www.reca.it)

# History of the Company

Family Company founded in **1974**, initially focused on metal furnishing sector.

After few years it begins to **diversify** its settling in industrial production and motor vehicles sectors. In particular with **Piaggio S.p.A.**

In **2008** it was necessary to a **further diversification** of markets and sectors.

In **2015** the Company installed the **photovoltaic system** that produces about 60% of the energy that it needs

Currently the Company has developed **partnerships** with international Companies, in order to improve the expected level of the service in the European market with the competitiveness of Asian products and our production and quality culture.

# Our Company

- Production facility **6500m2**
- **30/35 employees** (flexible depending on the workload)
- Specialized in the **tube processing**: cutting, laser tubes, bending, necking, forming, mechanical forming and welding.
- Experience with **different materials**: Iron, Stainless Steel, Aluminum, Brass and Copper
- **Design and implementation of internal manufacturing equipment** (molds, production tooling, control tooling)
- Realization of products on customer specifications [private label]
- Certifications:



**Italian institute  
of Welding**



# Production sites



# Production sites





# Production sites



# Raw materials warehouse





# Production area





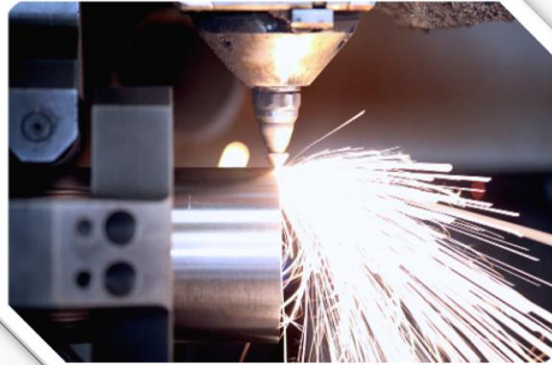
# Warehouse



# Machinery



Contruction of tooling



Cutting tube (laser and traditional)



Bending tube



Forming tube



Molding / Pressing



Beading machine



Welding



# Machinery

## CUTTING

- 1 Cutting machine Adige TS72 CNC
- 1 Laser Cutting machine Adige LT652

Both with four exhaust positions integrated with brushing plant and harvest.

- Capacity 4.000 kg
- Able of a minimum of 8mm to a maximum of 102mm of diameter for maximum cutting lengths of 1500mm, 3000mm, 4500mm.

## BENDING

- 9 Semiautomatic bending machines
- 14 Automatic bending machines

Up to five axes, left and right, with work islands.

The ability to tube bending metal is from a diameter of 8mm up to 110mm

## FORMING

- 1 Automatic machine profiling
- 2 Manual forming machines
- 6 Forming machines with numerical control

Forming capacity from a minimum of 8mm diameter to a maximum of 90mm diameter.

Possibility of processing rolling, deburring and threading.

## MOLDING / PRESSING

- 38 Mechanical presses from 10t to 130 t

## WELDING

- 1 Station welding tubes autogenous
- 1 Robotic station ABB
- 4 Manual stations equipped by turning or fixed benches
- 2 Points welding stations

## SHEET METAL PROCESSING

- 1 Bending sheet metal CMC
- 1 Shearing machine
- 1 Edging machine double spindle

# Products



Bathroom furniture



Exhaust manifold



motorcycle handlebars



Roof rack for cars



Chairs



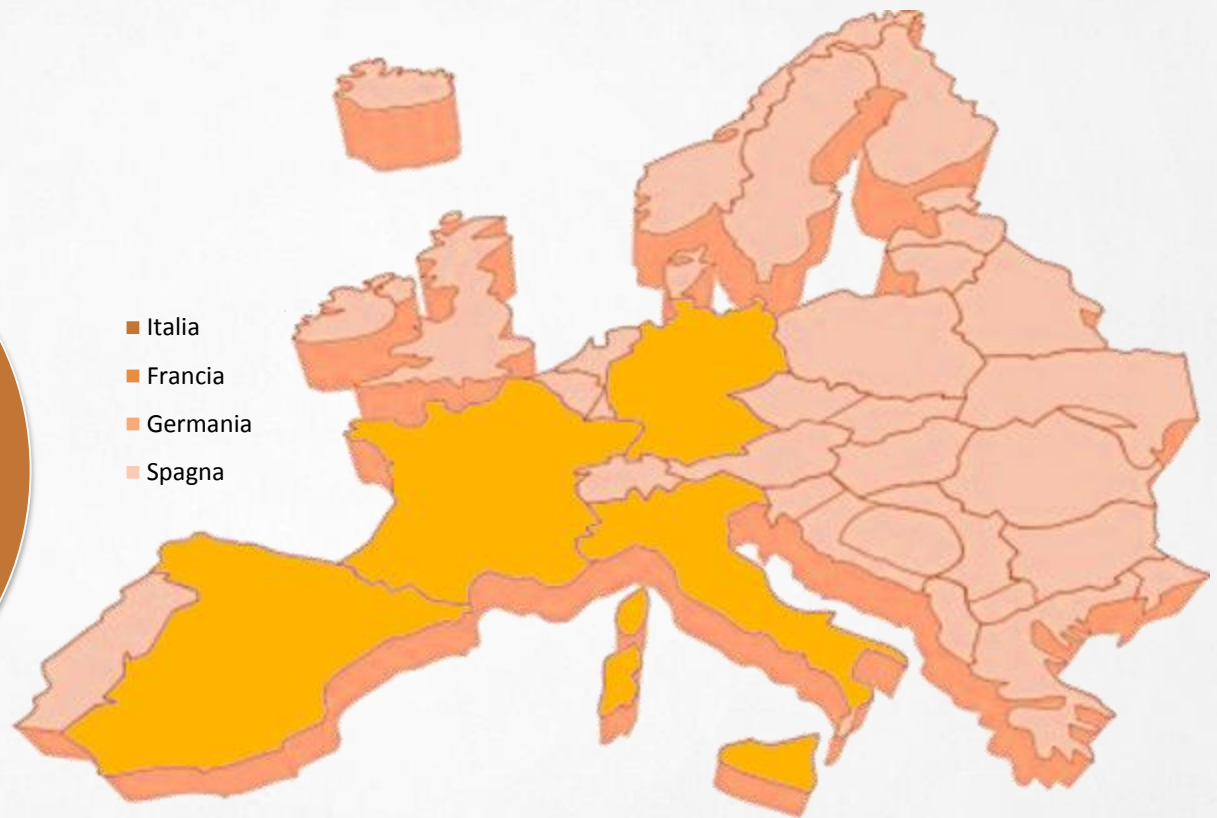
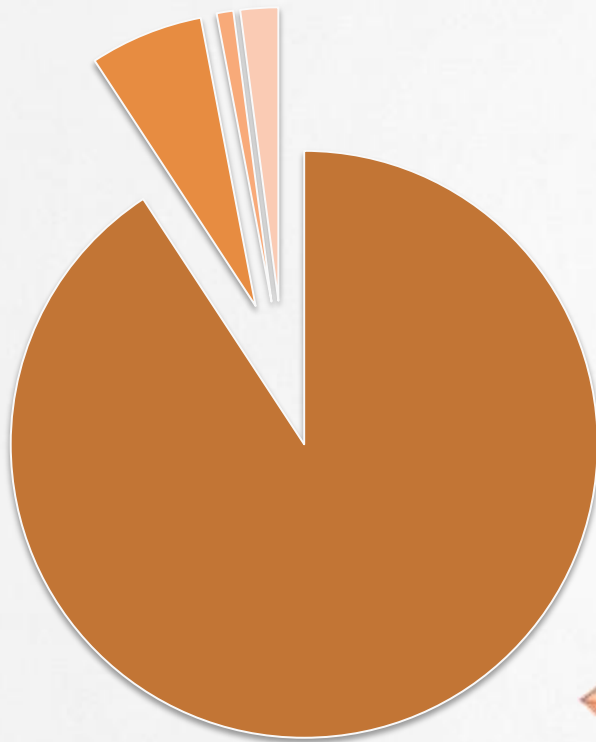
Washers chassis



## Some Customers



# Markets






# Company's strengths

- Technical expertise gained with industrial customers
- Internal tooling
  - Fast prototyping and production launch
  - Construction equipment Ad Hoc
  - Efficiency of production equipment in the time
- Simple organizational structure
- Capitalized company with solid financial structure

# Company's strengths

- Pushed to the customer diversification on Italian and foreign markets
  - Opening partnership and collaborations
  - Sensitivity to environmental protection: energy conservation, environmental management system
  - Sensitivity to health and safety in the workplace
- 



# Production process monitoring



# Production process monitoring

- Check material reception: quantity, quality of the material (through supplier quality certificate)
- Launches of the production with work orders for phase that indicates the process parameters and controls to perform
- Placing of the machine and start the production, control bending tube with 3D machine

# Production process monitoring

## Checks during the production

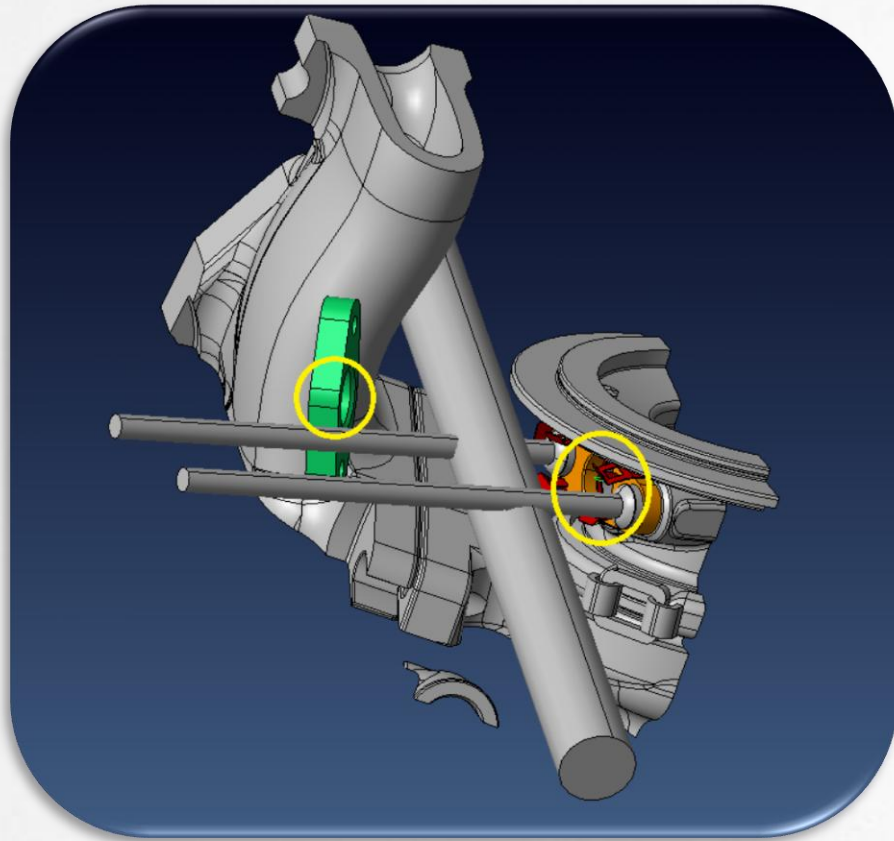
- **Phases of stamping and bending:**
  - Dimensional check by using dimes
  - Visual check of breaking tube
- **Welding**
  - Process qualification: by destructive tests (penetration, size of the weld bead,
  - Start of the production: parameters (A, W, d and thread quality, ....)
- **Monitoring during the production:**
  - diameter, cord completeness, leak testing



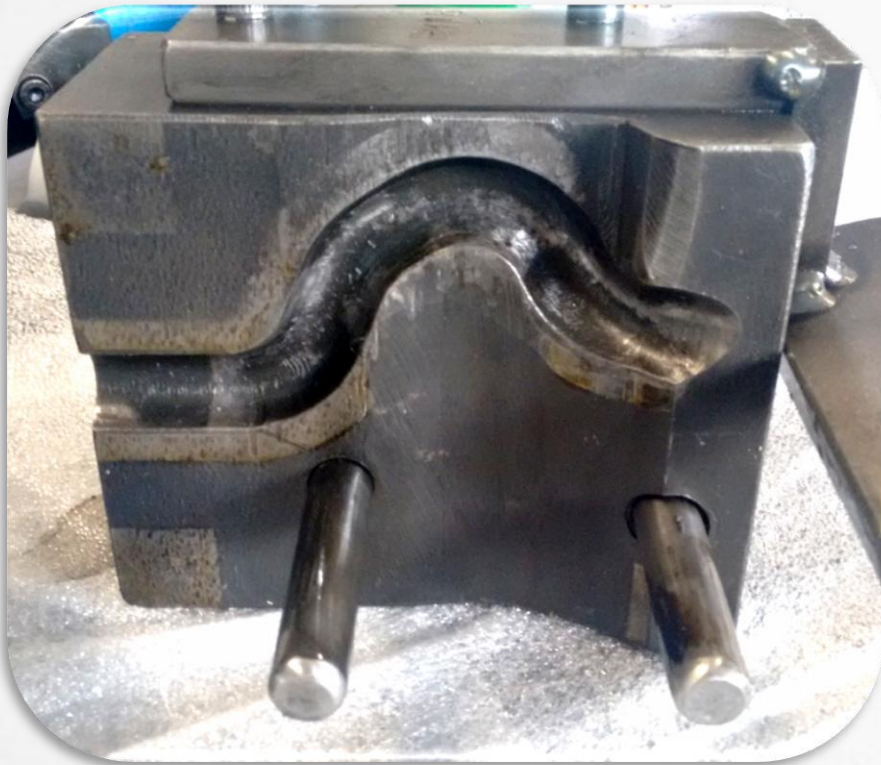
# Prototyping New Product Development



# Example prototyping

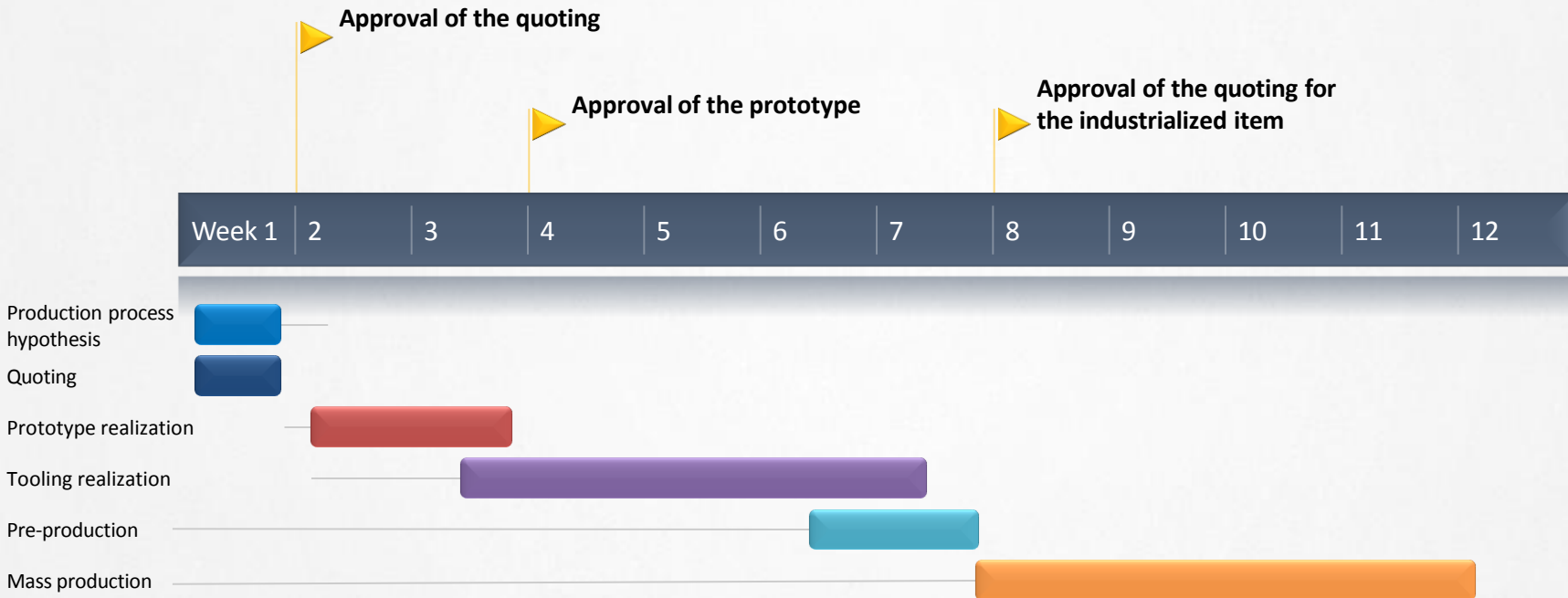


# Example prototyping for PIAGGIO





# Realization of a project



# Example realization of a new project

## Yearly analysis of the general costs

Turnover  
Middle cost  
Working hours  
Impact  
General expenses  
General expenses / hours  
Administration cost  
Administration cost/hours  
Total cost  
Amortization  
Amortization / hour  
Taxes  
Taxes / time  
Cost per minute

## Costs details

Material (tube)  
Material (Steel net)  
Tube cutting  
Net Cutting  
Bending "legs" of the chair  
Benging back and seat  
Welding net  
Welding chair

## Tooling costs

Bending tooling  
Welding net tooling  
Welding chair tooling

OFFER



# RECA

The logo consists of the word "RECA" in a bold, orange, sans-serif font. Below the text are three overlapping, horizontally-oriented ovals in a lighter shade of orange. The ovals are arranged in a way that they appear to be stacked or layered, with the bottom-most oval being the largest and the top-most being the smallest.

THANK YOU