

BHARGAV BRASS INDUSTRIES...



...ONE STOP SOLUTION FOR METAL FINISHING

CONTENTS:

- We are...
- Key Persons...
- Certification...
- WHY-Us.
- Vision, Mission and Goal...
- Strength...
- Quality policy...
- Business Process...
- Manufacturing and Plant facilities...
- Research & Development...
- In-House Facilities...
- We can Provide...
- Market...
- Products...
- Contact Us...



WE ARE...

- The destiny rewards who works hard towards creating their own destiny.
- At Bhargav Brass Industries, we firmly believe in these simple pearls of wisdom. And we have proved it right over and over again.
- It all began in 1996 and have steadily achieved a consistent growth, and won the confidence of all our clients of National/Inter-National repute approx 48 companies.
- The Range of products is manufactured by making use of high-grade required basic material such as Stainless steel Titanium, steel, Carbon steel, Aluminium, Copper, brass, and others. This range is being designed thorough effective technology in accordance with the defined parameters of the industry.



WE ARE...

- All our products ensure durability, smooth finish, resistance against corrosion and sturdy construction. Keeping in mind divergent demands of the clients, we offer this range in different colors and specifications.
- Because of our very stringent and updates system for guaranteeing quality as per the quality plans (ISO, IS, JIS, DIN, etc.), our product & services have been appreciated by all the companies, we deal with, and to the credit of our professional team-work, we have been also appreciated with a Vendor's Rating Certificates by almost all our valued customers.



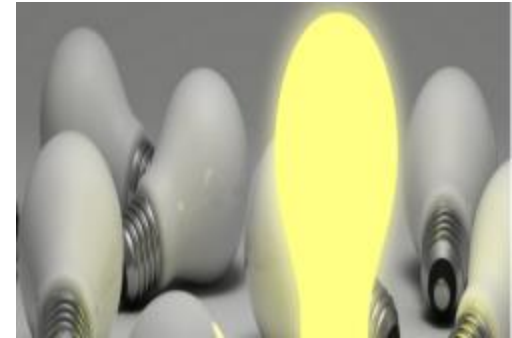
KEY PERSONS

- Amrutlal Vasoya Founder & Owner
- Tarun Vasoya *Director & Sales Manager*
- Jay Patel *Director & General Manager*



WHY US...

- Superior Quality
- Most Competitive Prices
- Timely Delivery
- Customer Focused & Growth Oriented Management
- On-Going Research & Development
- Customer Satisfaction
- All Metal Products Under One Roof
- Continuously Upgraded Machinery & Equipments.



VISION, MISSION

- **Our Vision :** We shall try to create Eternal Place and Happiness for all working with and for us.
- **Our Mission :** To create a Nurturing – Place of order and to provide Opportunities for each person to become Responsibility Independent and Effectively Inter-Dependent in order to achieve worthwhile Purposes.



GOAL...

- **Our Goal:** In order to achieve our Mission and Vision, we must remain Healthy and must Grow Steadily in Real Value (Not Inflation) and at a Pace to remain in Harmony with the Changing Time.



STRENGTH

- Our future depends on the dedication of individuals to lead the way for the quality we wish to achieve.
- Methodology, management & consistency of process provide the environment for achieving perfection.
- We go far beyond 100% measurement of components; its commitment to achieving perfection in all aspects of manufacturing and is reflected in our customer satisfaction with our products.



QUALITY POLICY...

- To deliver services as per customer's needs and expectation in Design & Development.
- To conform National and international standards with continual improvement.
- To achieve time bound implementation of project with cost effectiveness.
- With effective implementation of quality management system(QSM) to a world class organization.
- We provide on time delivery.



CERTIFICATE

- ISO 9001:2015
- ISO 14001:2015
- OHSAS 18001:2007
- CE
- D&B
- FIEO (Federation Of Indian Export Organizations)



BUSINESS PROCESS



● Quality Check Points

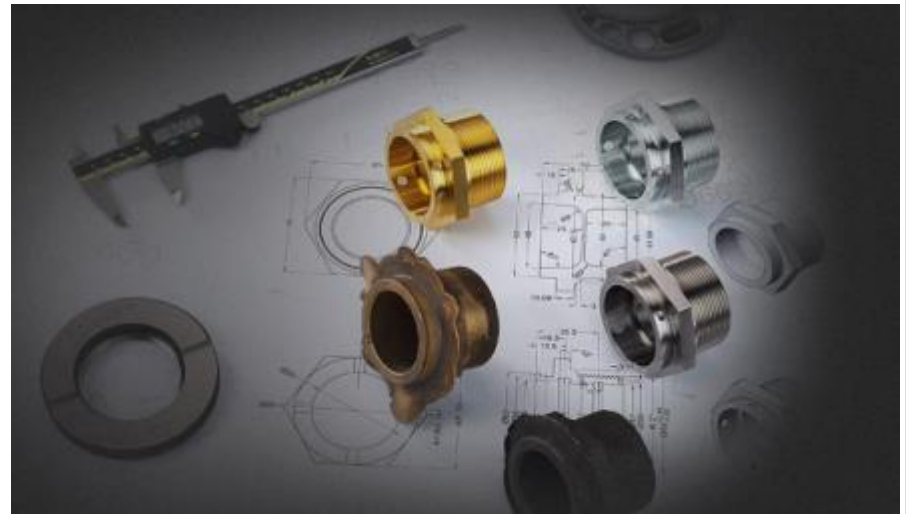
MANUFACTURING AND PLANT FACILITIES

- The Company has its modern Precision metals manufacturing plant at Jamnagar, Gujarat, India.
- It is equipped with the latest Cnc, Vmc, Tmc, swiss turning machine, experienced manpower in tool room, design department, Material inspection Lab, a Technically qualified quality assurance team.
- Manufacturing processes are carried under one roof of the premises, which helps us to meet our quality objectives like delivery deadlines, quality products etc, with much productivity.
- We are dealing with various products of Aluminum, Stainless steel, Mild steel, Carbon Steel Metals, Titanium Required in almost all Segment of the industries.
- As, we have most dedicated and experienced team involves in getting quality products, Our organization have well gained reputation amongst our customers and competitors.



DESIGN, RESEARCH & DEVELOPMENT

- We have CAD facility to ensure that the customers drawings are properly identified, and ensured process control plan is made from the drawings.
- We have full equipped Material testing Lab inhouse to verified material's Chemical-composition, Hardness, tensile, elongation, Surface-Roughness value Etc.
- Each and every parameters are identified and controlled during the production.



FACILITIES INCLUDE...

- Sand, Shell mold, Pressure die casting & Investment casting.
- Extrusion plant for copper based alloy.
- Hot Forging Unit.
- Turning & Milling Facilities through full automation Technology.
 - Vertical Milling machines – 4 Axis(Hass & Ace micromatic Made)
 - Swiss Turning machines - 5 Axis (Tsugami made)
 - Turn mill Center - 4 Axis (Hass Made)
 - CNC Machines - 2 Axis (Ace micromatic & Lmw Made)
 - Drill Tap center - 3 Axis (Ace micromatic made)
- Material testing Lab.
- Special Purpose Machines. (SPM)
- Quality Check/Assurance.
- One Piece Visual Inspection.
- Packing & Dispatch.



CASTING

- We have Sand, Shell mold casting for non-ferrous alloy, Pressure die casting for aluminum & investment facilities for stainless steel.



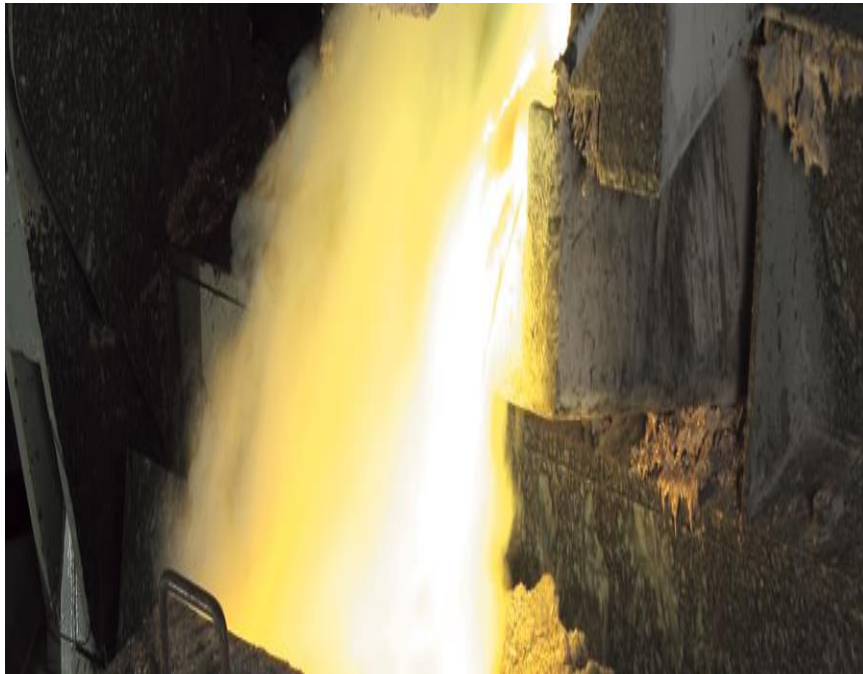
EXTRUSION PLANT

- We have our own in-house extrusion plant, for Brass and Copper materials to fulfill our requirement to produce finished goods.
- We have capacity of around 300 Tons per month for extrusion for our internal use only.



FORGING

- We have Forging unit facility to provide inputs (Raw- material) for finished products.
- We can make any shape through forging die and After machining convert it into final component.

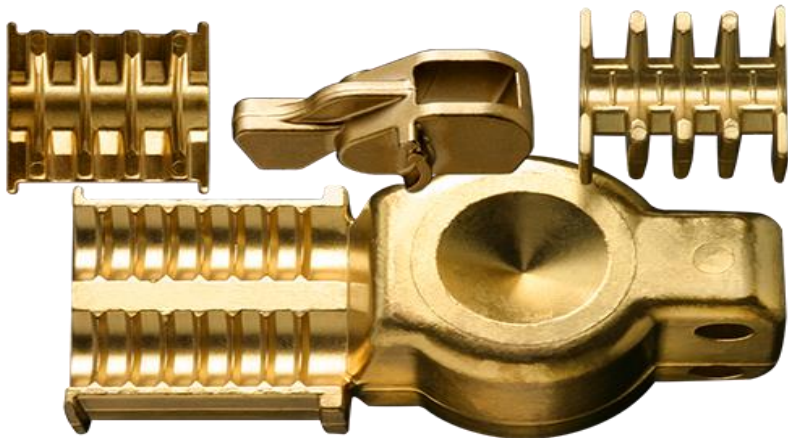
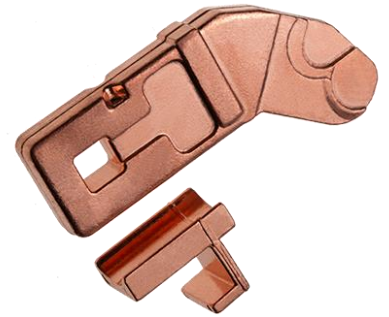
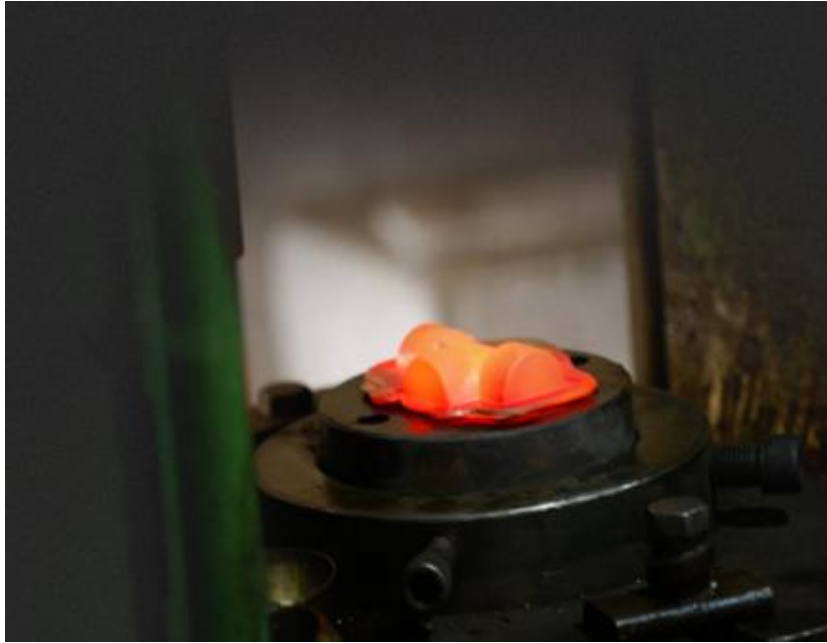


FORGING CAPABILITIES

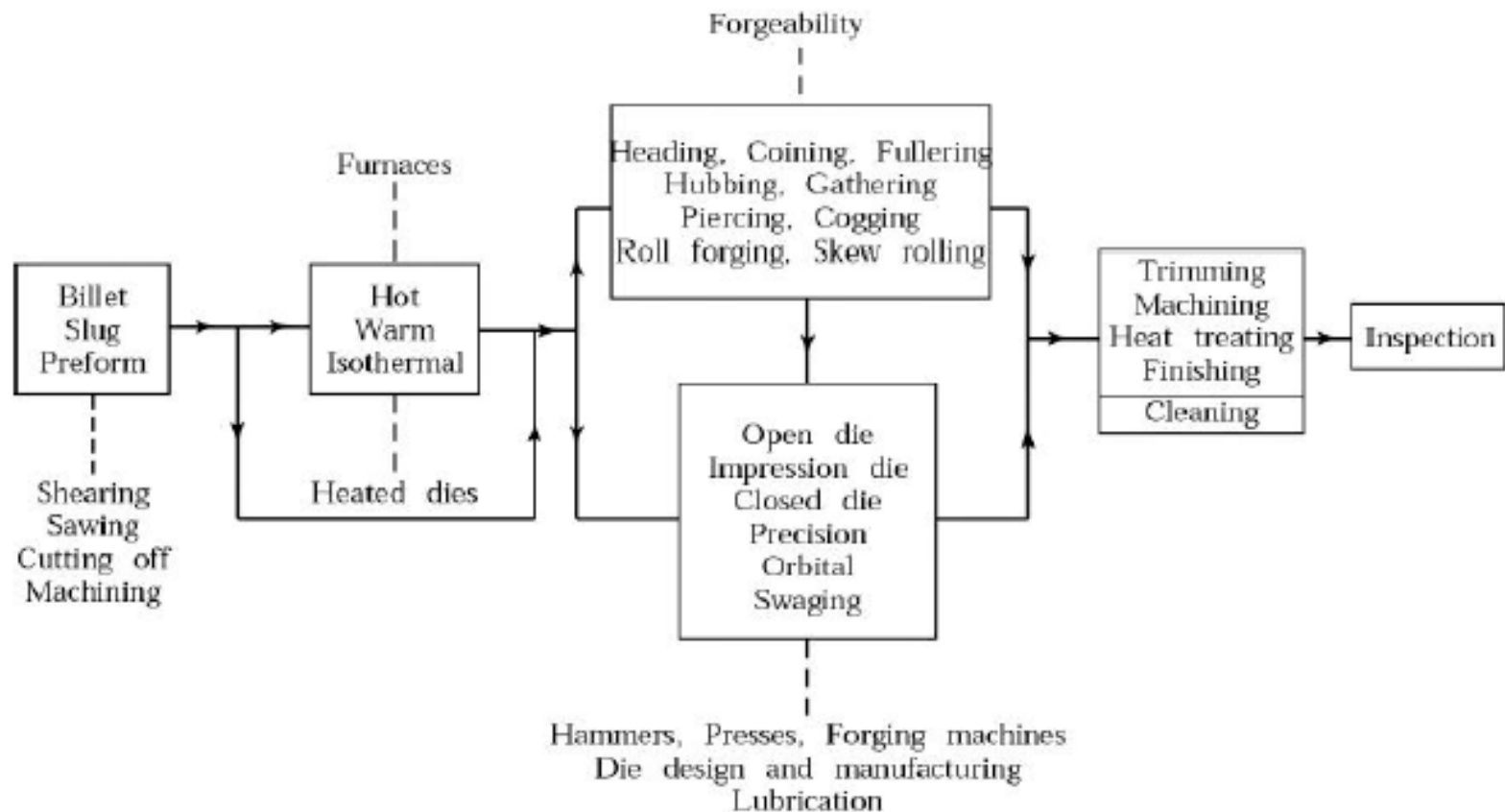
- Forging press with temperature controlled Eco-friendly induction heaters for slug heating.
- Can Forge: Mild steel, Carbon steel, Aluminum, Copper, Brass with High Copper Grade, Bronze etc.
- Press Tonnage: 500 M ton, 200 M Ton, 150 Ton and 150 M ton (Hydraulic, Up stroke & down stroke Forging.)
- Forged components range: 25 grams to 25 kilograms.
- Significant saving of material by using horizontal core technology.
- Shot blasting machine and vibratory finishing machine for De-scaling of forgings.



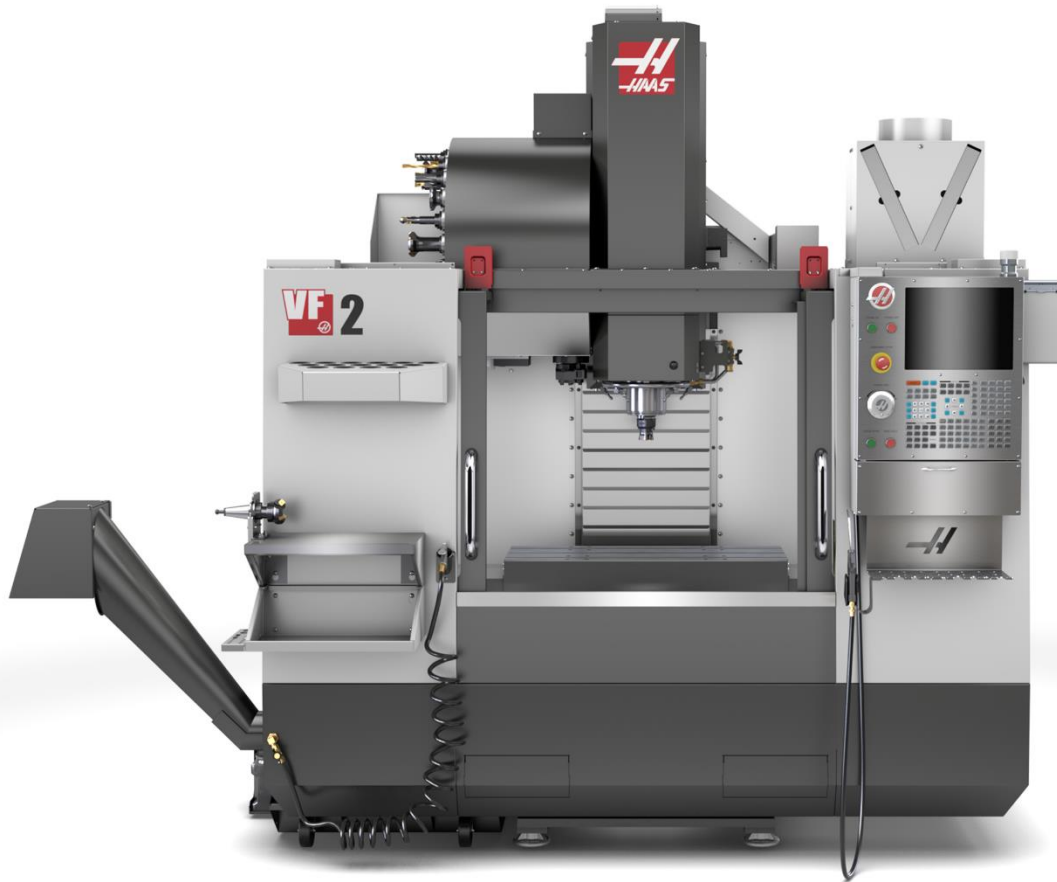
FORGED PARTS



OUTLINE OF FORGING AND RELATED OPERATIONS



VERTICAL MILLING MACHINE(VF-2I)



VERTICAL MILLING MACHINE SPECIFICATIONS(VF2I)

Travels			
X-Axis	762mm	Feed rates	25.4 m/min
Y-Axis	406mm	Axis motor max thrust	11343 N
Z-Axis	508mm	Tool Capacity	30+1
Table size		Spindle	BT 40 Tapper
Length	914mm		
Width	356mm		
Max load on table	1361Kg		
Spindle	22.4kW		
Max Rating	10,000		
Max Speed	122Nm@2000 rpm		
Max Torque	Inline direct-Drive		



DRILL TAP CENTER — SPARK XL(ACE MICROMATIC MADE)



SPECIFICATION OF DRILL TAP CENTER

Table size	mm	650 x 310
T-Slot Dim	N x W x P	3 x 14 x 100
Max. load on table	kgf	200
X - Axis Travel	mm	400
Y - Axis Travel	mm	300
Z - Axis Travel	mm	250
Dist. From Spindle Face To Table Top	mm	150 - 400
Spindle Nose Taper		7 / 24 No.30
Spindle Speed	rpm	80 - 8000
Rapid Traverse X, Y & Z Axes	m / min	36 / 36 / 36
Guideways		LM
Number Of Tools	Nos	8
Chip To Chip Time	Sec	3.5
Tool Change System		DISC ARMLESS
Tool Shank Type		BT-30
Spindle Power (fanuc)	kw	5.5 / 3.7



SWISS TURNING(TSUGAMI B0205)



SWISS TURNING MACHINES(TSUGAMI MADE)

Maximum Bar Stock	20 mm / 0.79"
# Axes	5
Sliding Headstock / Guide Bushing	YES
CONVERTIBLE: Run w/o Guide Bushing (chucker)	YES
Max Headstock Stroke w/ Guide Bushing Max Headstock Stroke w/o Guide Bushing	210 mm / 8.26" 45 mm / 1.77"
# Tool Positions (std / max)	21
# Live Tool Positions (std / max)	4
Control	FANUC 0i-TF
Main Spindle Speed	200 – 10,000 rpm
Sub Spindle Speed	200 – 12,000 rpm
Live Tool Speed	8,000 rpm
Main Spindle Motor	2.2 / 3.7 kW
Weight	2,000 kg / 4,409 lbs.
Footprint: W x D x H	1,655 × 1,125 × 1,700 mm 65.2" x 44.3" x 66.9"





Make: Minimatic
Size: Dia 08.00 to 38.00 mm
No. of machines : 4
Accuracy: 0.02mm



SLIDING HEAD



Make: Minimatic

Size: Dia 01.50 to 20.00 mm

No. of machines : 1

Accuracy: 0.01mm



DRILL UNIT



Make: Swastik

Size: Dia 00.80 to 12.50 mm

No. of machines : 8

Accuracy: 0.05 mm



PLC BASED DRILL



Make: Minimatic
Size: Dia 00.80 to 25.00 mm
No. of machines : 1
Accuracy: 0.02 mm



THADA UNIT(MANUAL)



Make: Kelvin & Techno
Size: Dia 5.00 to 35.00 mm
No. of machines : 10
Accuracy: 0.07 mm



CNC UNIT



CNC MACHINE(LMW MADE)



CNC MACHINE (LMW-SMART TURN)

DESCRIPTION	UNIT	SMARTURN
CAPACITY		
Swing Over bed	mm	480
Chuck dia. Max	mm	165
Max. Turning dia	mm	200
Max. Turning Length	mm	262
SPINDLE		
Spindle nose	type	Flat (Dia: 140)
Hole through spindle	mm	53
Spindle speed	rpm	4500
Spindle motor power (Cont./S6 40%)	kW	Siemens – 7 / 10.5
FEED		
Cross travel X-axis	mm	105
Longitunal travel Z-axis	mm	320
Rapid traverse rate X/Z axes	m/min	20 / 20
TURRET		
No. of stations	nos.	8
Tool shank size	mm	20 x 20
Max. Boring bar dia	mm	32
Turret Indexing	type	Hydraulic
TABLE		
No. of tool holders	nos	8
Total shank size	mm	32 mm
Max. Boring bar dia.	mm	32
TAILSTOCK		
Quill dia	mm	65
Quill stroke	mm	80
Quill taper	-	MT-4
CNC SYSTEM		
Controller	-	Siemens



CNC MACHINE (ACE MICROMATIC- LM-16-300)



ACE MICROMATIC SPECIFICATION – LM 16- 300

Turret Type		BTP-80
No of Stations / Tools		8
Spindle Size / Nose		A2-5
Max.Bar Capacity	mm	42
Bore through Spindle	mm	52.5
Max.Spindle Speed	rpm	4000
Spindle Motor Power-Fanuc (Continuos)	kW	5.5
Spindle Motor Power-Fanuc (30 min)	kW	NA
Spindle Motor Power-Fanuc (15 min)	kW	7.5
Spindle Motor Power-Siemens (Continuos)	kW	7
Spindle Motor Power_Siemens (S6-40%)	kW	8.4
X-Axis Stroke	mm	160
X-Z Axis Rapid	m/min	30
Z-Axis Stroke	mm	310
Tailstock Quill Taper	Travel -135.00mm x diameter 80.00 mm	MT-4



CNC UNIT



Make: Minimatic MGT-100

No. of machines : 02





Make: Minimatic MGT-50
No. of machines : 02



Technical Specification

CAPACITY	UNITS	MGT - 75	MGT - 100	MGT - 150
Swing Over Bed	mm	ø100	ø150	ø200
Max turn length	mm	100	150	150
Max turn diameter	mm	ø80	ø100	ø150
AXIS SLIDES				
X Axis Travel	mm	200	300	350
Z Axis Travel	mm	120	150	200
Rapid feed (X & Z Axis)	M/min	20	20	20
SPINDLE				
Spindle Motor	Kw	3 HP / 2.25 Kw	5 HP / 3.7 Kw*	7.5 HP / 5.5 Kw*
Spindle nose	-	A2-4	A2-4	A2-5
Hole through spindle	mm	32	32	40
Max. Bar Capacity	mm	22	22	30
Spindle Speed range	rpm	3500	3500	3500
TOOLING (GANG TYPE)				
Tool Shank (Cross Section)	mm	20 x 20	20 x 20	25 x 25
Tool Shank Round	mm	32	32	32
ACCURACY				
Position Accuracy	mm	0.010	0.010	0.010
Repeatability	mm	+/- 0.005	+/- 0.005	+/- 0.005
MACHINE DIMENSION				
Dimension (L x B x H)	mm	1800 x 1300 x 1525	2000 x 1300 x 1525	2200 x 1400 x 1800
Weight (Approx)	Kg	1900	2200	2500
CONTROLLER				
Controller	Siemens 808D/828D & Fanuc Oi Mate TF			



Make: Minimatic nano 25
No. of machines : 02

Technical Specification

CAPACITY		
Max Turn Length	mm	50
Max Turn Diameter	mm	ø 25
AXIS SLIDERS		
X Axis Travel	mm	75
Z Axis Travel	mm	75
Rapid Feed (X & Z Axis)	M/min	10
SPINDLE		
Spindle Motor	Kw	1.5
Spindle Nose	-	A- 25 Collet
Hole Through Spindle	mm	ø 26
Max. Bar Capacity	mm	ø 25
Spindle Speed Range	rpm	4500
TOOLING (GANG TYPE)		
Tool Shank (Cross Section)	mm	16 x 16
Tool Shank Round	mm	ø 16
ACCURACY		
Position Accuracy	mm	0.020
Repeatability	mm	0.020
MACHINE DIMENSION		
Dimension	mm	1100 x 800 x 1700
Weight (Approx)	Kg.	750
CONTROLLER		
Hust - H4CP-T		





Make: Minimatic MXL 200
No. of machines : 02



Technical Specification

MODEL	MXL - 160	MXL - 200	MXL - 750	MXL - 1000/1500
CAPACITY				
Max Turning Dia	200mm	250mm	400mm	400/500mm
Max Turning Length	300mm	500mm	750mm	1000/1500mm
Swing Over Bed	300mm	400mm	500mm	600mm
Std. Turning Dia	165mm	200mm	300mm	350mm
MAIN SPINDLE				
Spindle Nose	A2-5	A2-6	A2-6/A2-8	A2-8
Bore Through Spindle	40mm	55mm	55/75mm	75mm
Bar Capacity	30mm	45mm	45/62mm	62mm
Chuck Size	165mm	200mm	200/250mm	305mm
Spindle Drive				
Spindle Motor Power	5.5/7.5kw	7.5/11kw	7.5/11kw	11/15kw
Speed Range (Rpm)	1000-3500	1000-3500	1000-2500	750-2500
AXIS SLIDES				
X Axis stroke	140mm	170mm	250mm	225/275mm
Y Axis stroke	300mm	500mm	750mm	1000/1500mm
Rapid Traverse : X Axis	20 M/min.	20 M/min.	20 M/min.	20 M/min.
Rapid Traverse : Z Axis	20 M/min.	20 M/min.	20 M/min.	20 M/min.
TAIL STOKE				
Quill Diameter	70mm	80mm	80mm	100mm
Quill Stroke	80mm	100mm	100mm	100mm
Taper In Quill	Mt3	Mt4	Mt4	Mt5
TURRENT				
Turret Type	Ele. Mech/hyd			
Turret	Btp-63	Btp-80	Btp-80	Btp-100
No Of Stations	8	8	8	12
Max Boring Bar Dia	32	40	40	40
Tool Cross Section	20mm	25mm	25mm	25mm
ACCURACY				
Position Accuracy	0.010mm	0.010mm	0.010mm	0.010mm
Repeatability	+/-0.003mm	+/-0.003mm	+/-0.003mm	+/-0.003mm
MACHINE DIMENSIONS				
Dimension(Lxwxh)	2250x1400x	2800x1450x	3150x1750x	3500x1950x
	1500	1750	1850	1950/4000x
				1950x1950
Weight(Approx)	2700kg.	3500kg.	4500kg.	6000/7000kg
Control System	Siemens 808d/828d & Fanuc Oi Mate TF			



Make: Mahavir 200-A
No. of machines : 01

CAPACITY	
Swing Over Bed	450 MM
Std. Tur. Dia.	200 MM
Max. Tur. Dia.	300 MM
Max. Tur. Length	300 MM
SLIDES	
Cross X Axis Travel	175 MM
Longitudinal Z Axis travel	325 MM
Rapid Feed X&Z Axis	24 M/MIN.
BALL SCREW	
Z Axis	32X10 P MM
Motor Torque Z Axis	6 NM
X Axis	32X10 P MM
Motor Torque X Axis	6 NM
SPINDLE	
Spindle Motor	7.5 KW/9 KW
Continuous Rating	7.5 KW/9 KW
Spindle Bore	38 MM
Spindle Nose	A2-5
Max. Bar Capacity	30 MM
Chuck Size	200 MM
Speed Range	50-3000
Full Power Speed Range	1000-3500
TURRET	
No. Of Station	8
Tool Size	25X25 MM
Max. Boring bar Capacity	40 MM
OTHER DATA	
Weight(Approx)	3000 KG.
Machine dimension(LXBXH)	3200X1680X1680
ACCURACY	
Positioning Accuracy	0.010 MM
Repeatability	0.003 MM
TAIL STOCK	
Quill Diameter	80
Quill Stroke	100



Make: Mahavir GX 100-S
No. of machines : 01

CAPACITY	
Swing Over Bed	225 MM
Std. Tur. Dia.	100 MM
Max. Tur. Dia.	135 MM
Max. Tur. Length	150 MM
SLIDES	
Cross X Axis Travel	90 MM
Longitudinal Z Axis travel	150 MM
Rapid Feed X&Z Axis	20 M/MIN.
BALL SCREW	
Z Axis	25X10PMM
Motor Torque Z Axis	4 NM
X Axis	25X10PMM
Motor Torque X Axis	4 NM
SPINDLE	
Indus. Motor	3.5 KW
Continuous Rating	3.5 KW
Spindle Bore	28 MM
Spindle Nose	A2-4
Max. Bar Capacity	20 MM
Chuck Size	135 MM
Speed Range	50-3500 RPM
Full Power Speed Range	1000-4000 RPM
TURRET	
No. Of Station	3
Tool Size	20X20 MM
Max. Boring bar Capacity	32 MM
OTHER DATA	
Weight(Approx)	1700 KG.
Machine dimension(LXBXH)	1830X1430X1525
ACCURACY	
Positioning Accuracy	0.010 MM
Repeatability	0.003 MM
TAIL STOCK	
Quill Diameter	N/A
Quill Stroke	N/A

SPECIAL PURPOSE MACHINES (SPM)



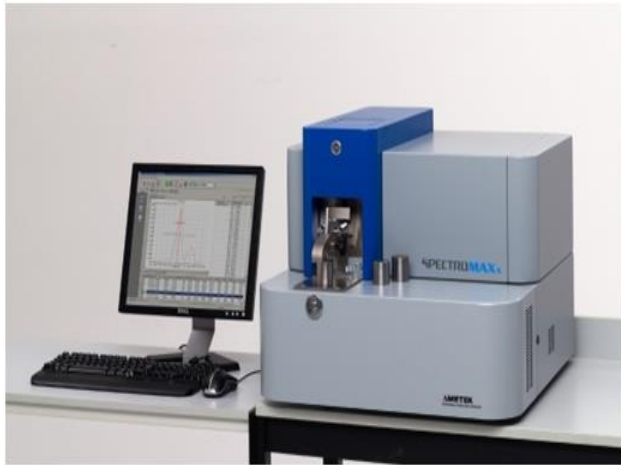


QUALITY CHECK / ASSURANCE

- An ISO 9001:2015 certification gives an assurance to our customer that our process will meet rigid international manufacturing and delivery standards.
- Our experience, well defined process, inspection at all stages allow us to meet our goal of getting it right the first time and every time.







ONE PIECE INSPECTION

- We are giving importance to each and every component. Thus, we are doing One – piece inspection.



PACKING & DISPATCH



WE CAN PROVIDE...

- We provide the below list of Documents as per customers requirement with Samples or Production Lots:

Inspection reports and Material Test certificate with all deliveries

Production Part Approval Process (PPAP) Documentation

Samples with Initial Sample Submission Report

Process Failure Mode Effects Analysis (PFEMA)

Statistical Process Control (SPC)



MARKET

○ AVIATION INDUSTRIES



○ ELECTRICAL INDUSTRIES



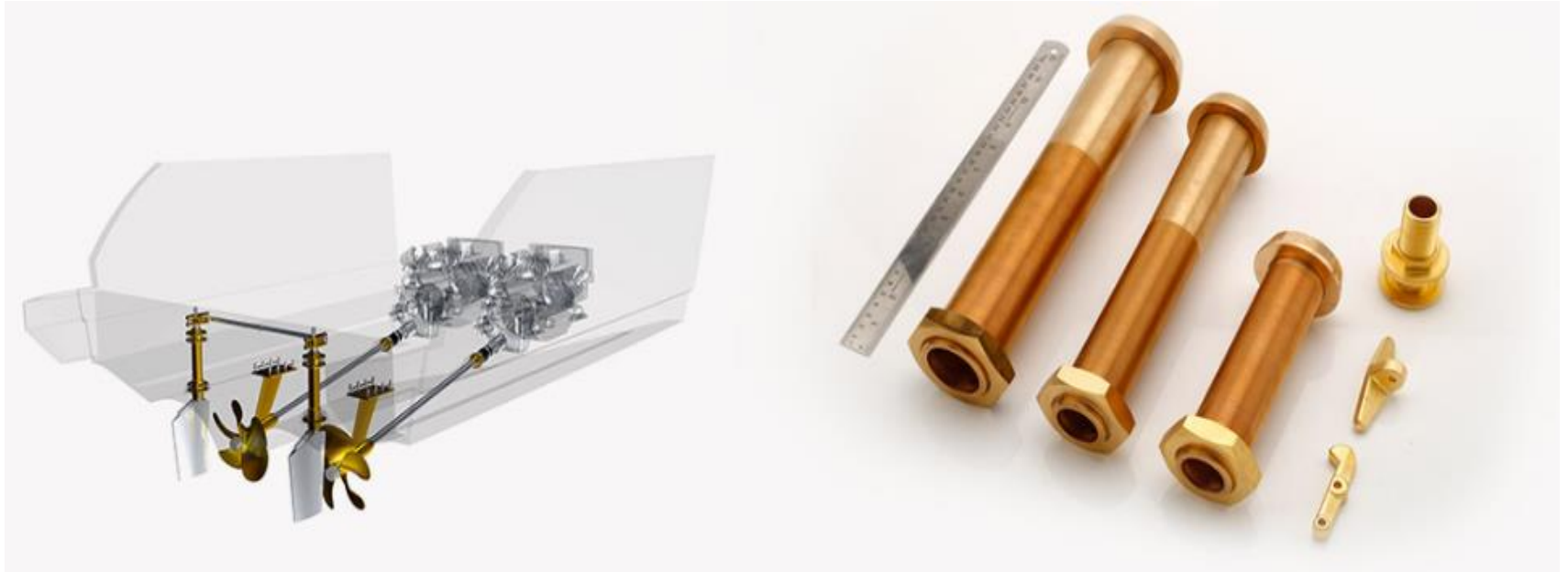
○ FITTINGS (Hydraulic pressure control)



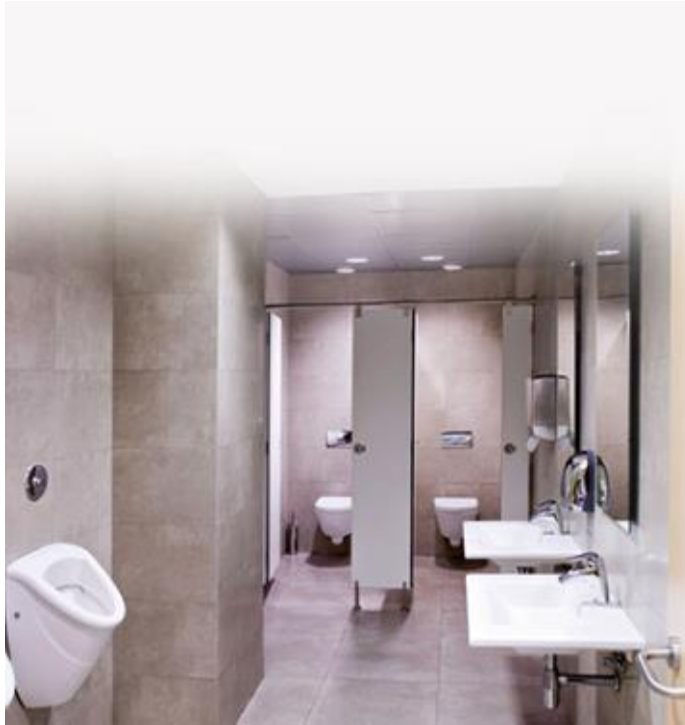
○ HVACR INDUSTRY (HEATING VENTILATION & AIR CONDITIONING)



○ MARINE INDUSTRIES



○ SANITARY



○ PLUMBING



○ AUTOMOBILE AND GAS INDUSTRIES



○ TELECOMMUNICATION & ELECTRONICS



○ MEDICAL INDUSTRY

Manufacturing for:
The Medical Industry



STEEL & STAINLESS STEEL PARTS



○ TITANIUM PARTS (AERO SPACE, MEDICAL & RENEWABLES ENERGY)



ALUMINUM PARTS



BRASS CUSTOMIZED PARTS



COPPER & BRONZE PARTS

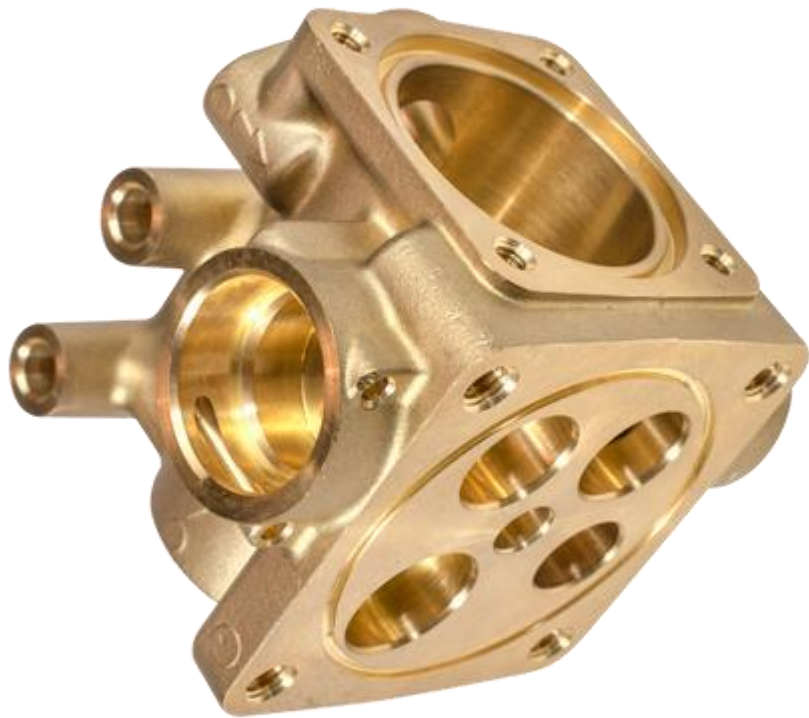


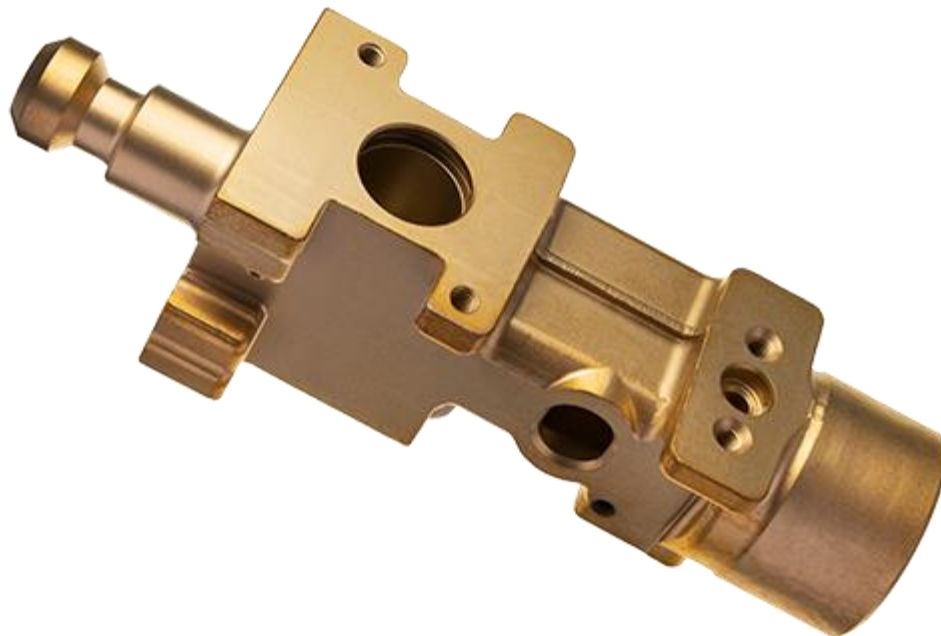


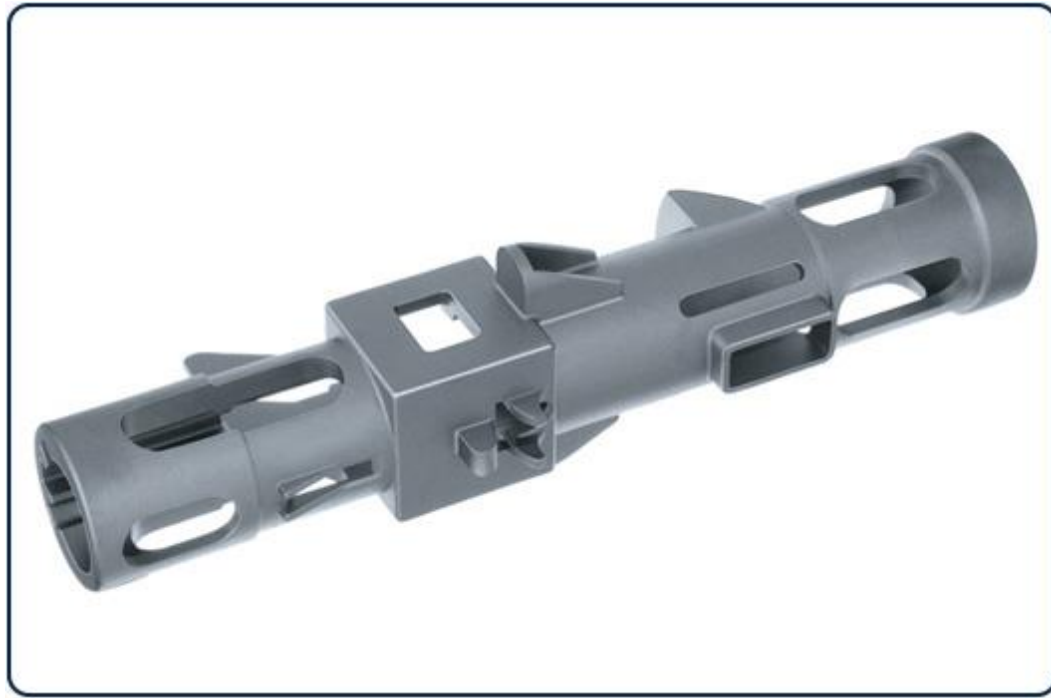














STAINLESS STEEL & STEEL TURNUED & MILLED PARTS





copper turned and milled components





PRODUCTS



CONTACT US

○ **Bhargav Brass Industries**



Plot No. 3905/B,
'W' Road, G.I.D.C. Phase-III,
Dared, Jamnagar – 361005.
Gujarat. INDIA.



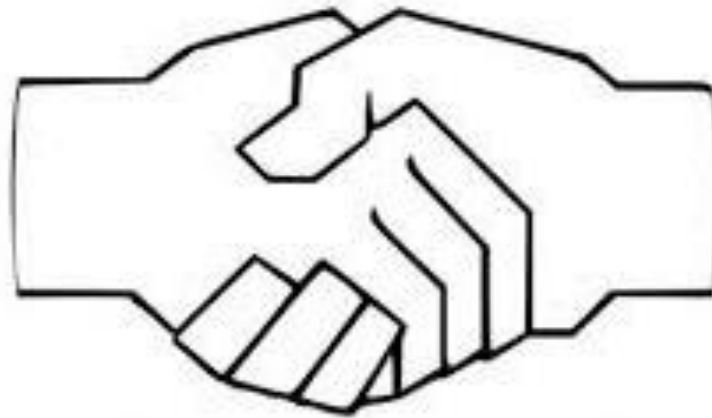
www.bhargavbrass.com

www.bhargavbrass.in



info@bhargavbrass.com





THANK YOU

