



Sky-Tech Manufacturing (Ningbo) Co. Ltd.



General Presentation mixed up-20180110 [兼容模式]



Sky-Tech Manufacturing (Ningbo) Co. Ltd.

General Information:

Employee: 93 employees
Shifts: 2 or 3 shifts
Plant space: 6000 m²
Certificate: ISO9001:2008
Tech-design solutions:
Auto CAD Solidworks Pro-E

Department staff:

- Management: 4
- R&D senior engineer: 2
- Production engineers:3
- Quality engineers:2
- Production staff:77
- Sales team: 2
- Purchasing: 1
- Logistic: 1
- Financial: 1

Manufacturing equipment:

CNC machine center(11sets)
CNC Lathe (13sets)
CNC Gun Driller 3 set
CNC EDM & CNC WEDM
Ultrasonic cleaner

Treatment :

- Heat treatment
- Anodization
- Phosphorization
- Electrophoretic coating
- Powder coating
- Dacromet coating
- Zn. Ni. Cr. Plating

Manufacturing process:

Machining

Turning

Milling

Drilling

Trimming

Quality control:

CMM (3 coordinates measurement)
High-precision image measuring device
Precision Optical Projector
Spectrometer (Subcontractor service)
Vernier calipers
Gauges (Ring, Plug, Thread, Bore)
Hardness test
Roughness test

Material Resources:

Bar & Tube
Profile
Forgings
Extrusion
Cold-drawn
Investment Castings
Pressure Die castings

Material category: Carbon steel & Stainless steel, Aluminum, Zinc, Copper alloy

Facility & office view



Machining area



Quality lab



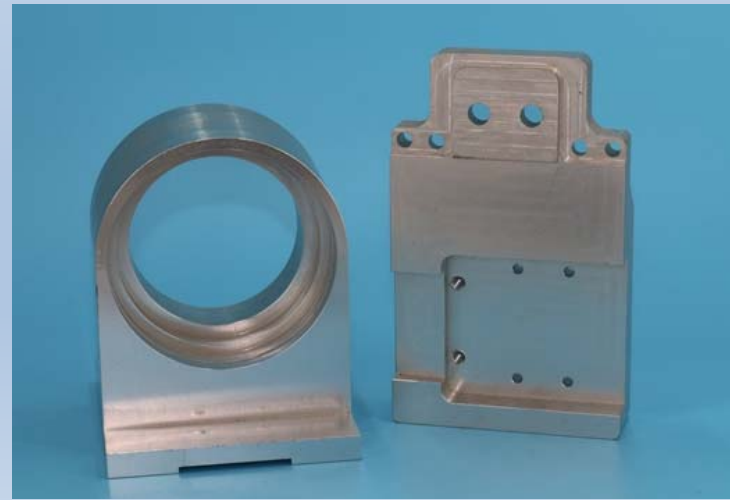
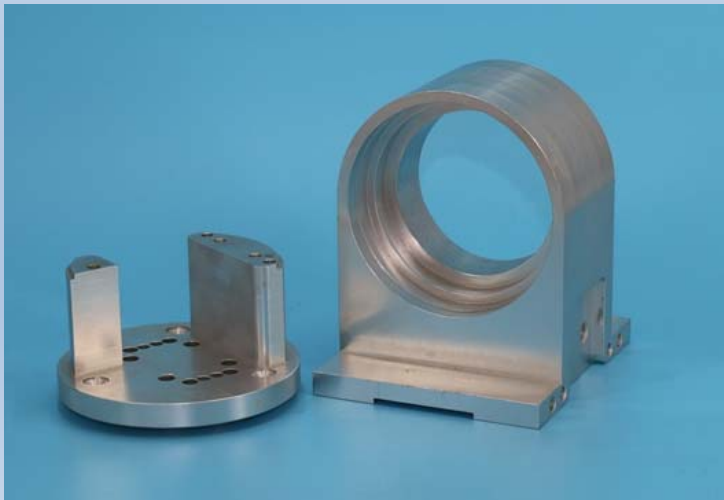
Incoming material inspection
Rough castings /forgings inspection
CNC finished parts inspection
Field inspection
Final packing inspection
Function test if required

Pressure die casting parts machining



Material: AlSi7Mg AlSi10Mg AlSi12 ADC12 etc.

Aluminum parts



Aluminum parts



Steel parts



Investment casting & Forging stainless steel parts



Iron Casting products



Foundry for Aluminum Castings

Main facilities:

1. Mold made In-house for Aluminum castings
2. High Pressure die castings
3. Low pressure die castings



Mold area



Low pressure casting



Machinery for castings

- Melting furnace (5)
- Heating treatment(1)
- Sand blasting(1)
- Core machines(3)



Low pressure die casting parts---pictured in field

