

“Quality is the road to improvement”

Introducing TDF Steel Kft.

Our company

- Budapest Headquarters
- Kunszentmárton Plant
- More than 30 years of experience in manufacturing
- Certificates: MSZ EN ISO 9001:2015, DIN EN ISO 3834-2:2006



TANÚSÍTVÁNY



A MARTON Szakértő Iroda Kft.
2040 Budakesi, Aradi u. 32.
igazolja, hogy a

TDF Steel Kft.

Székhely: H-1143 Budapest, Hungária körút 64.
Telephely: H-5440 Kunszentmárton, Tiszakürti út 6.
a

Gép- és acélszerkezet gyártás

érvényességi területen minőségirányítási rendszert vezetett be és alkalmaz.

A tanúsítvány regisztrációs száma: 2020406

A felhatalmazott audit során bizonyították, hogy a rendszer

MEGFELEL

az
MSZ EN ISO 9001:2015
szabvány követelményeinek.

A tanúsítvány érvényes: 2022. június 27-ig.

az évesen végrehajtott felülvizsgálatok igazolása mellett.

Budapest, 2019. június 28.



• TANÚSÍTVÁNY • CERTIFICATION • ZERTIFIZIERUNG •

TANÚSÍTVÁNY

hegesztéssel kapcsolatos minőségirányítási követelmények
teljesítéséről

ÉMI-TÜV SÜD Kft.
2000 Szentendre, Dózsa György út 26.
tanúsítja, hogy a

TDF STEEL Kft.

H-1143 Budapest, Hungária krt. 64
Telephely: H-5440 Kunszentmárton, Tiszakürti út 6.

a 26C1053019165 sz. jegyzőkönyvben megadott érvényességi körben
teljesíti az:

MSZ EN ISO 3834-2:2006

szertíri fémek ömlesztőhegesztésével kapcsolatos

teljes körű minőségirányítási követelményeket.

A tanúsítvány 2019-11-08 -tól 2022-11-08 -ig érvényes.

Nyilvántartási szám: TA 1926 - 034 - A

Szentendre, 2019-11-08

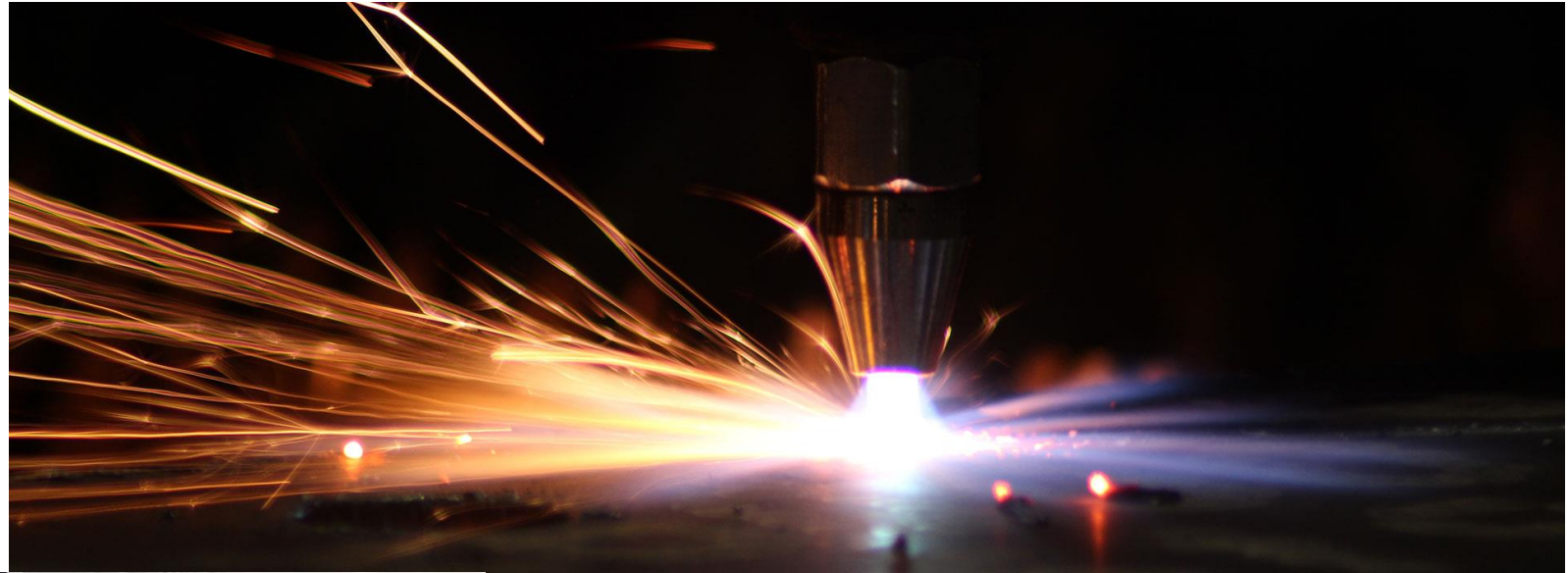


Wiegand Kristina
EM-TÜV SÜD Kft.

• CERTIFICATE • CERTIFICADO • CERTIFIKAT •

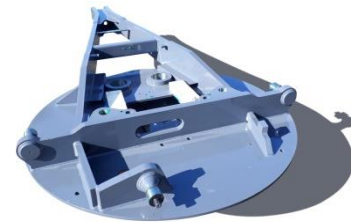
Our mission

To manufacture welded steel structures and parts of the highest quality



Main manufacturing profile

- Parts of earth-moving machines
 - Machine frame structures
 - Drawrods
 - Rotary crowns
 - Bulldozer blades
 - Scarifiers
- Excavator shovels
- Parts of material handling robots used in foundries and forges
- Parts of agricultural machines
 - Cultivators
- Parts of forestry machines
- Total production of heavy steel structures



Comprehensive manufacturing technology



From cutting the raw materials...

... to packaging complete, surface-treated and assembled products.

Our machinery

Realized new investments

ZMM LT 580/2000 CNC lathe

- Main motor performance: 15/11 kW
- Max. rotating \varnothing : 580 mm
- Max. latheable \varnothing : 380 mm
- Spindle nose distance: 2,000 mm
- Revolver head storage capacity: 8 pcs
- Controller: Siemens



Our machinery

Realized new investments

Tailift TPR 1600 H radial drilling machine

- Main motor performance: 5.5 kW
- Max. distance between the column and the centre of the spindle: 1,550 mm
- Max drillable diameter (steel): 65 mm
- Max drillable diameter (cast iron): 70 mm



Our machinery

Realized new investments



High-precision plasma cutter

BPL-H 2006-300-EP-3D CNC

- Hypertherm XPR300 plasma power supply
- 3D plasma head
- Hypertherm EDGE Connect CNC controller
- Cutting width 2,100 mm
- Cutting length 6,200 mm



Our machinery

Realized new investments



High-precision CNC fibre laser machining cell

BLSN 6020 4kW

- Laser performance 4 kW
- Max. cutting width: 2,000 mm
- Max. cutting length: 6,000 mm
- Range of cutting thickness (MS): 0-20 mm
- Range of cutting thickness (SS): 0-12 mm
- Range of cutting thickness (AL): 0-12 mm
- Beckhoff CNC controller



Our machinery

Realized new investments

Fermat CNC horizontal boring machine

- Main motor performance: 41/61.5 kW
- Main spindle Ø: 130 mm
- Spindle RPM: 10-3,000 1/min
- Table size: 2,000x3,000 mm
- X axis movement range: 5,000 mm
- Y axis movement range: 2,500 mm
- Z axis movement range: 2,000 mm
- Controller: Heidenhain iTCN 530



Our machinery

Realized new investments

ROMI C 510 CNC lathe

- Main motor performance: 15/11 kW
- Max. rotating Ø: 520 mm
- Max. latheable Ø: 255 mm
- Spindle nose distance: 1,500 mm
- Controller: Siemens 828



Realized new investments

Modernization of welding technology



2021.04.22.



Realized new investments

Revolution-regulated screw compressor

Variable 37

- Oil-injection
- Air-cooled
- Direct drive
- Possible operating pressures: 5-13 bar
- Motor performance: 50 kW
- Transportation rate: 5.77 m³/min
- Intelligent ALMIG AIR Controll microprocessor control

Variable 65

- Transportation rate: 9.93 m³/min
- Motor performance: 80 kW





Realized new investments
Modernization of measuring
technology

Our machinery

New investments in progress



CNC flame cutting machines with 4 flame cutting heads

BPL-H-O 2006-4L

- Cutting width: 2,100 mm
- Cutting length: 6,200 mm
- 4 flame cutting heads with OHC sensors (GCE)
- Tecnos PC 12 CNC controller

BPL-H-O 2512-4L

- Cutting width: 2,500 mm
- Cutting length: 12,000 mm
- 4 flame cutting heads with OHC sensors (GCE)
- Tecnos PC 12 CNC controller



Our machinery

New investments in progress



CNC-controlled 6-axis hydraulic press break, with CNC-controlled supporting arms

APHS 61600-6-D69T-2LK120

- Capacity: 6,000 kN
- Bending length: 6,100 mm
- Four-axis rear stopping system
- CNC-controlled plate-tracking arms
- D69 Delem CNC controller



New investments in progress

Improvement of machining technology

Sanco SHB 110 30 RS machining centre

- Main motor performance: 22/26 kW
- Main spindle Ø: 110 mm
- Spindle RPM: 2,500 1/min
- Rotary table size: 1,400x1,600 mm

Movement ranges:

- X axis: 3,000 mm
- Y axis: 1,800 mm
- Z axis: 1,500 mm
- W axis: 500 mm
- Controller: Siemens



New investments in progress

Development of cutting technology

Ho Chun U 1000

Conventional bed milling machine

- Main motor performance: 5.5 kW
- Table size: 1,400x1,600 mm

Movement ranges:

- X axis: 1,000 mm
- Y axis: 380 mm
- Z axis: 430 mm



New investments in progress

Development of cutting technology

Elbo Controlli Sethy six

External tool inspection probe

Measuring range:

- D 400 mm
- H 600 mm



New investments in progress

Shot blasting

Lauco 250NS

Shot blasting equipment with blast wheels

- 6 x pneumatic blasting material-regulator valves
- 6 x 11 KW turbines
- Interchangeable shielding of the blasting area
- Pulley blasting material collector system
- Elevator
- Blasting material-cleaning unit with a cascade fine cleaner
- With a blasting material blow-off unit
- With a brush-off cleaning unit
- Blasting material containment silo



New infrastructural investments

Energy infrastructure modernization on the property

Construction of solar panel system



New infrastructural investments

Industry 4.0



New infrastructural investments

Production management system



New infrastructural investments

Material handling system



2021.04.22.



**THANK YOU FOR YOUR
ATTENTION!**