

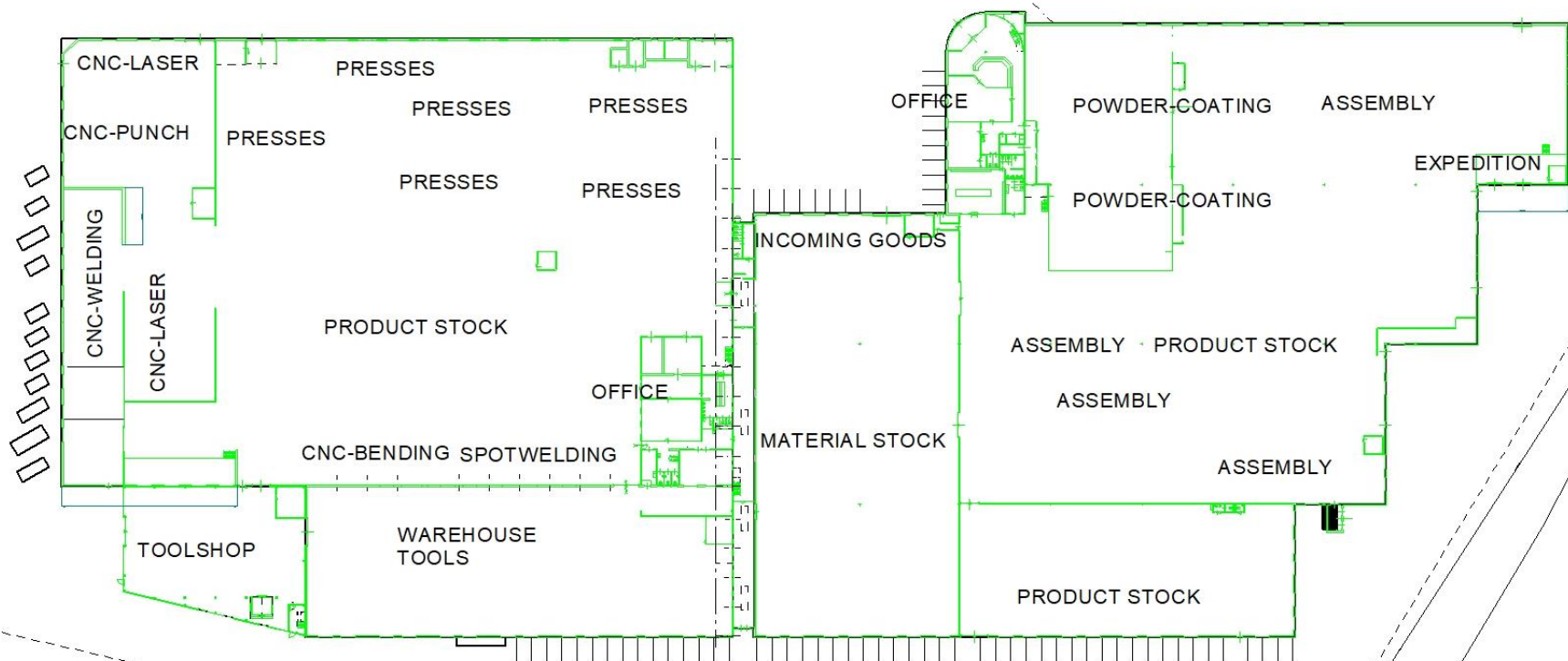


*We challenge  
Sheet metal*





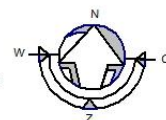
**SITE AREA: 34.000 SQ.MTR.**  
**FACTORY AREA: 21.000 SQ.MTR.**



**SITE AREA: 34.000 SQ.MTR.**  
**FACTORY AREA: 21.000 SQ.MTR.**

kadastraal bekend  
bestemmingsplan  
sectie - nummer  
plaatselijk bekend  
enkeel

gemeente Varsseveld (Oude IJsselstreek)  
B - 0507/0001  
Gesinkampstraat, Varsseveld  
1500





Excellent Preferred European supplier

Produces and delivers metal products to various industries daily

Winner of The Dutch Royal Union award:  
"Smart Manufacturer"

Bears total responsibility according to his own vision:  
"one responsible partner"

Develops technical metal components with associated progressive or transfer production tools

Is committed each day to achieve optimal satisfaction for his customers which we guarantee by our controlled processes and deliveries

**OUR ART OF  
MANAGEMENT****OPERATIONAL:**

STRATEGIC, CULTURE,  
STRUCTURE, PEOPLE,  
MACHINES,  
ENVIRONMENT

**METHODS:**

FMEA  
KPI  
6S

**STANDARDS:**

LEAN, SKILLS,  
RESPECT,  
CSR, ISO

**PROCESSES:**

STANDARDIZED  
PRODUCTION,  
EDI, LOGISTICS

**MISSION**

PROFITABLE PRODUCTION OF HIGH-QUALITY METAL PRODUCTS WITH ADDED VALUE

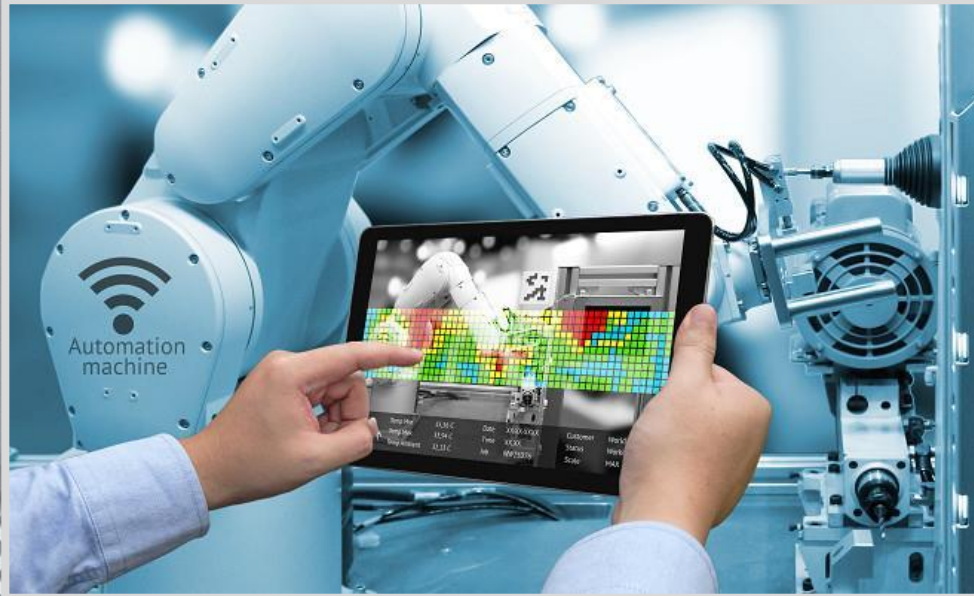
**VISION**

BE THE BEST SUPPLIER IN HIGH-QUALITY SHEET METAL BUSINESS WHO IS;  
EFFICIENT, LOW IN PRICE AND THEREFORE COMPETITIVE  
FOCUS ON CUSTOMERS AND DELIVER AGREED QUALITY  
OFFERING OUR EMPLOYEES CHALLENGING WORK IN A SUSTAINABLE ORGANISATION

**STRATEGY**

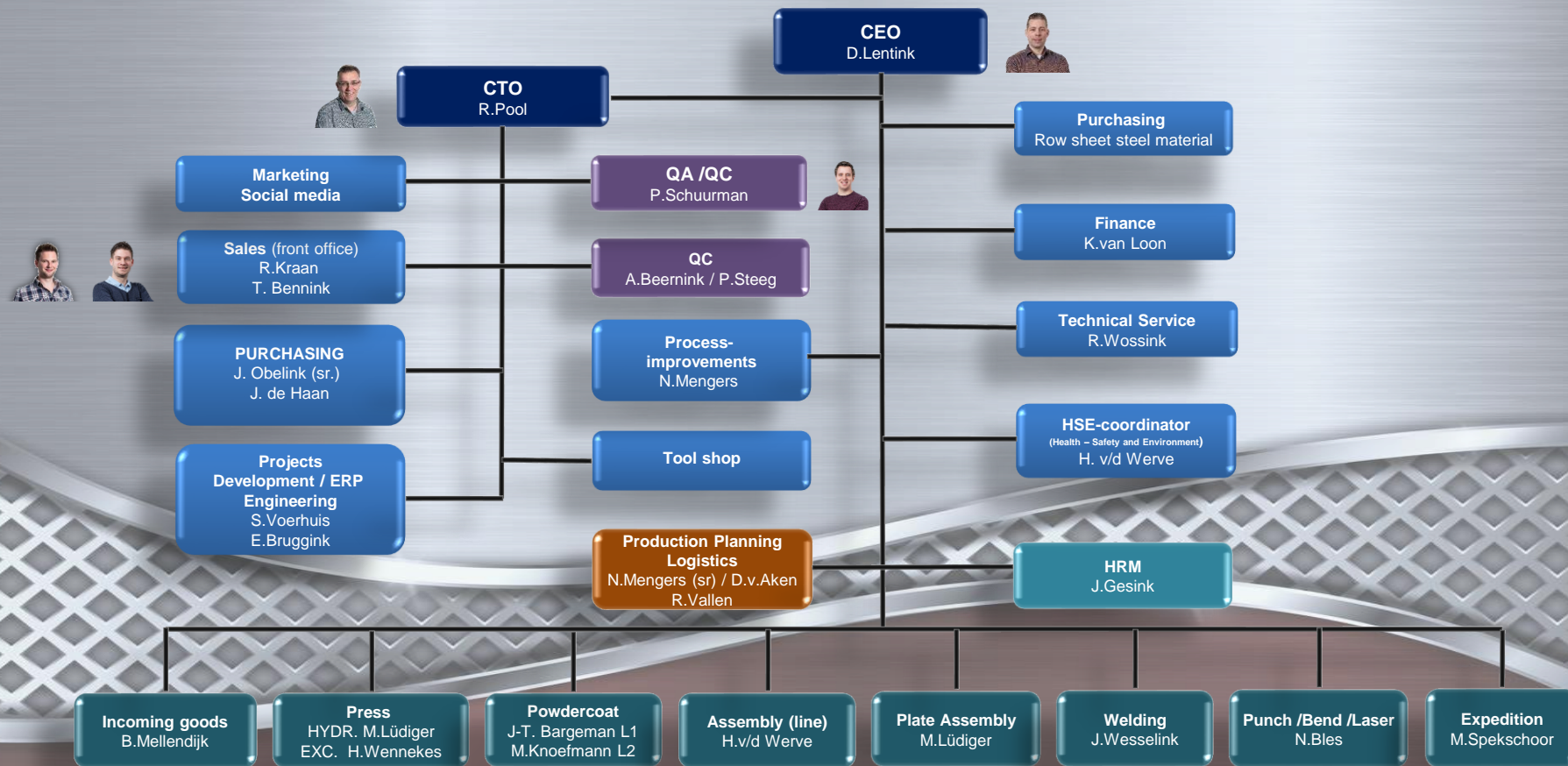
CONTINUE INCREASING TURNOVER WITH EXISTING AND NEW CUSTOMERS IN NEW BRANCHES;

BE THE WELL-KNOWN TRUSTED COMPANY WITH CUSTOMER CARE AND SERVICE  
GO FOR OPPORTUNITIES AND SOLUTIONS TOGETHER WITH OUR CUSTOMERS  
COMPANY WITH A CLEAR IDENTITY AND VISIBILITY  
QUALITY; STAY INNOVATIVE, KEEP CLEAN, SUSTAIN AND IMPROVE (CONTINUOUSLY)



## LOW PRODUCTION COST DEFINES “THE SMART MANUFACTURING” PROCES:

- A HIGH LEVEL OF PROCES AUTOMATION,
- A MANUAL OPERATION.....OR...
- COMBINATIONS OF BOTH.





**ESTABLISHED IN 1958**

**DANIËL LENTINK BECAME CEO / OWNER OF COMPANY LENTINK DECEMBER 2014**

## FINANCIAL

TURNOVER:	2019:	24,4	MILLION	2020:	22	MILLION	2021:	26,6	MILLION	2022:	36	MILLION	2023:	27,4	MILLION
INVESTMENTS:		0,6	MILLION		0,9	MILLION		2	MILLION		1,4	MILLION		2,3	MILLION
FTE:		128			115			122			146			119	

## COMPANY PRODUCTION POSSIBILITIES

- ENGINEERING, MODELING, SERVICE, LOGISTICS,
- SMALL PRESSES (16) AND BIG PRESSES, (12) FROM 65 TONS TILL 700 TONS WITH DRAW CUSHION (PRESS TABLE SIZE MAX. 4200M X 2200M)
- AUTOMATIC PRESS OPERATION CELLS, (4)
- LASER MACHINES, (3)
- PUNCHING /CUTTER-MACHINE,
- CNC-BENDING MACHINES, (9)
- CNC-POWDERCOATING LINES, (2)
- VARIOUS ASSEMBLY POSSIBILITIES; PRODUCTION LINE, ASSEMBLY JIGS, ROBOTISED, (POKA-YOKE)
- PAIRING / CONNECTING OPTIONS: CLINCHING, GLUING, SPOTWELDING, WELDING AND RIVETING.

## PRODUCTION NUMBERS

**ACTUAL ONGOING ARTICLES: > 11.000 PIECES**

**FOR EXAMPLE: HEATING CABINS: > 1.000.000 A YEAR MAKES AN AVERAGE OF >2575 CABINS EACH DAY**

**WATER /DRAINS: > 210.000 A YEAR MAKES AN AVERAGE OF >950 DRAINS EACH DAY**



PRESSING, CUTTING, DRAWING, BENDING, COINING,  
LASERCUTTING, PUNCHING, WELDING, FOLDING, POWDERCOATING,  
TRIMMING, BORDERING, FLANGING, FORMING, CURLING,  
SURFACE TREATMENTS, CONTROLLING, CHECKING, IMPROVING,  
EDUCATING, TRYING, DISCUSSING, LISTENING, ASSEMBLING,  
ENGINEERING, E-MAILING, MODELLING, MEASURING, REPORTING,  
COMMUNICATING, LEARNING, ADVISING, INFORMING, VISITING, SERVICING,  
DEVELOPING, ACCOMPLISHING, PROCESSING,.....DELIVER.

.....WORKING FOR YOU.....



PRODUCTS FOLLOW NORMALISED PRODUCTION PROCESSES AND CONTROL INTERVALS, TO ACHIEVE ORDERED CUSTOMER QUALITY

QUALITY NORM:

ISO 9001-2015

ISO 14001-2015

ECOVADIS

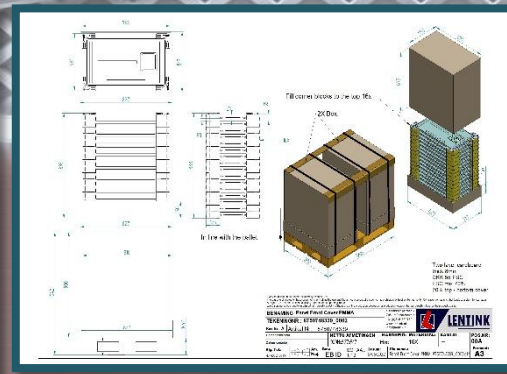
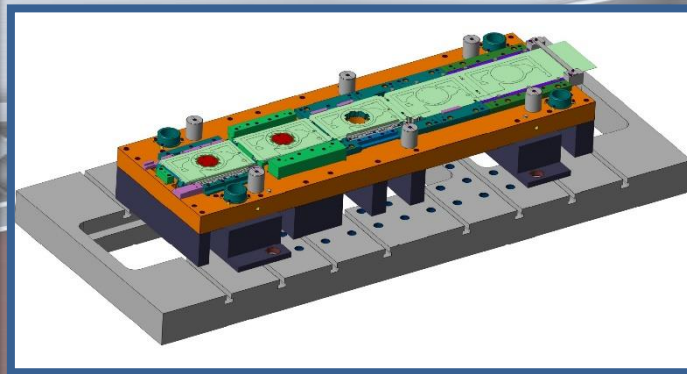
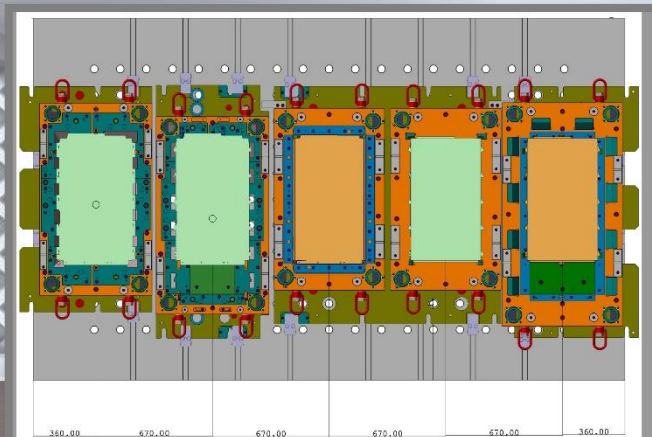
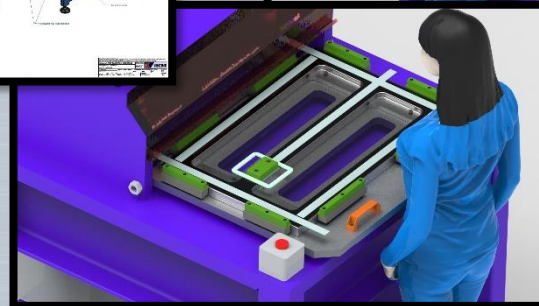
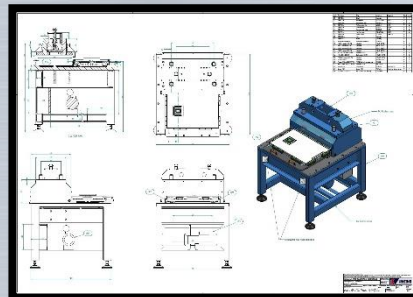
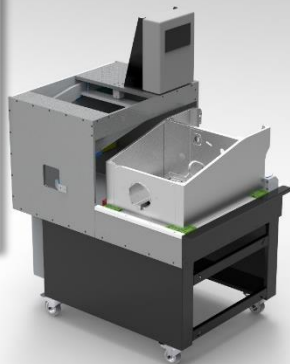
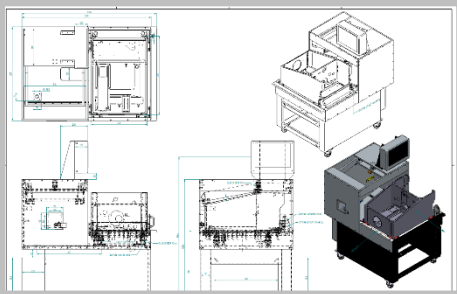
CSR

6S - ROUND

LEAN PRODUCTION







## WE SUPPLY TO:

- SANITARY
- HEATING
- AUTOMOTIVE
- TRANSPORT
- LIGHTING
- INDUSTRY
- FIRE SAFETY
- FOOD INDUSTRY
- HOUSEHOLD
- AGRICULTURE
- RECREATION

## STOCK POSSIBILITIES:

- EDI / SUPPLY-ON
- KAN-BAN
- MILKRUN
- JIT
- WAREHOUSE CONTROL









BDR THERMEA GROUP

MEKU - *ProLine*



Supplier Name: LENTINK METAALWARENFABRIEK BV

Local Site Name:

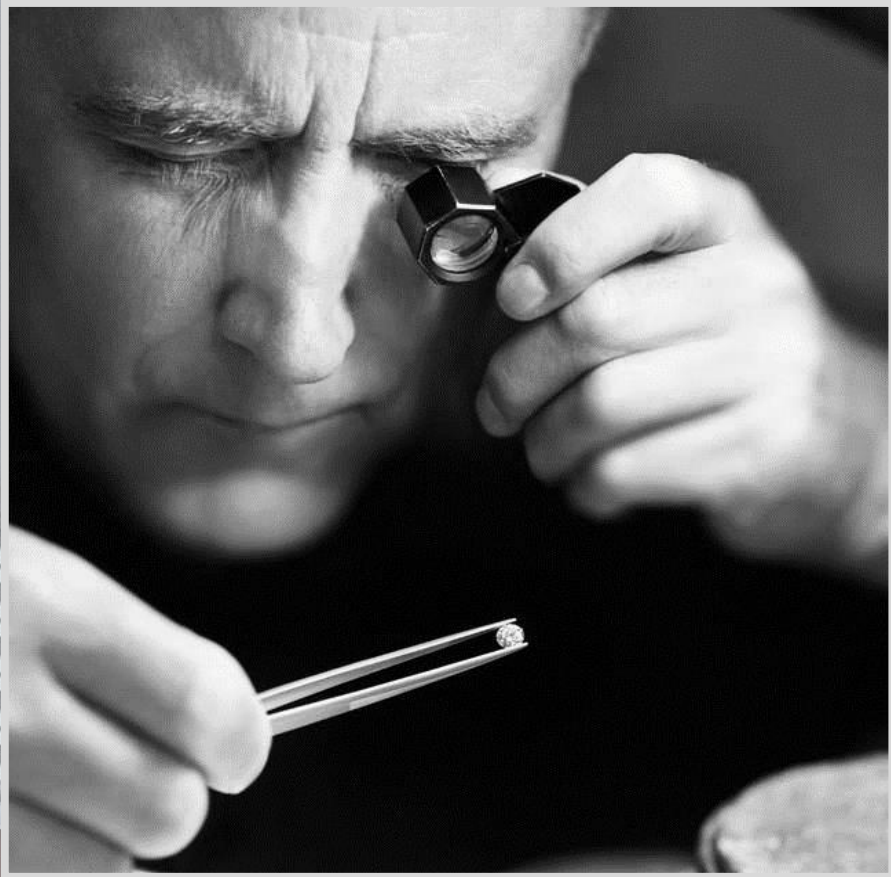
Remeha

## VENDOR RATING DASHBOARD



## PPM OF OUR CUSTOMER TOP 6

	2021	2022	2023
CUSTOMER R	220	108	89
CUSTOMER D	0	0	5
CUSTOMER BD	152	87	94
CUSTOMER BW	38	17	42
CUSTOMER V	0	0	2
CUSTOMER A	100%	100%	99%



**GIVE CUSTOMERS QUALITY, THAT'S THE BEST KIND OF ADVERTISING**

**(Milton Hershey )**

**QUALITY IS THE BEST BUSINESS PLAN**

**( John Lasseter)**

**QUALITY IS NO COINCIDENCE,  
IT'S A CONTROLLED PROCES**

**(Porsche GmbH)**

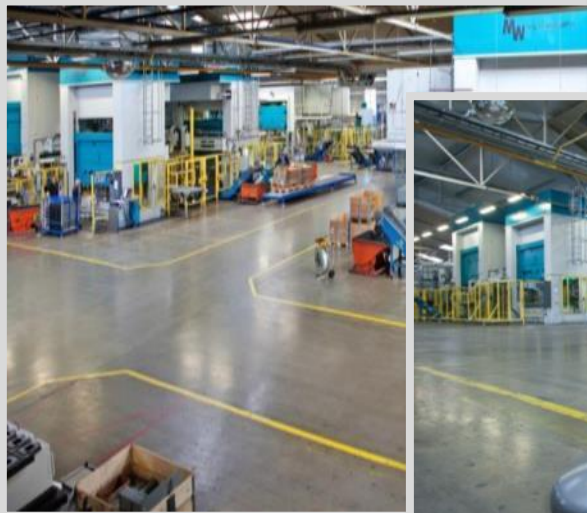
**WE DON'T ACCEPT FAILURES, WE DON'T MAKE  
FAILURES AND WE DON'T GIVE FAILURES TO THE NEXT  
OPERATION.**

**(Opel GmbH)**

**QUALITY MEANS DOING IT RIGHT WHEN NO ONE IS  
LOOKING**

**(Henry Ford)**



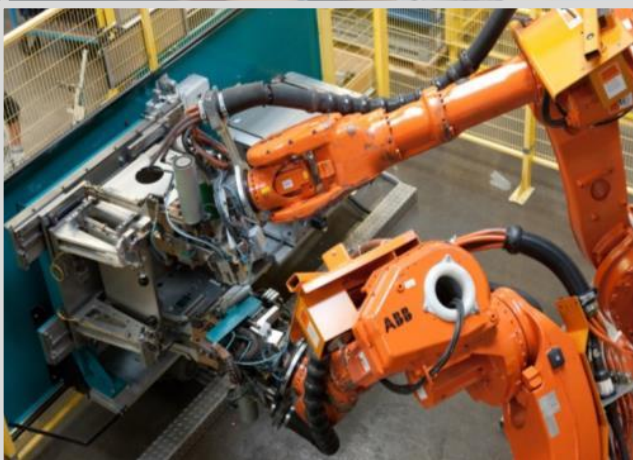














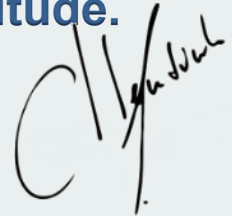


- **Dutch winner Smart manufacturing award in east region (The Royal metal Union)**
- **Excellent preferred supplier European leading companies (i.a. Bosch-group, BDR-group)**
- **Certificated Education schooling Company (VTL, OOM and KENTEQ)**
- **Winner cleanest Company east-Netherland (KvK)**
- **ISO and CSR GOLD certificated (Veritas, Ecovadis)**
- **Steady growing company (ING / ABN-AMRO BANK)**
- **Prix de Femme Metal (OOM)**





**In our Company  
Customer Service  
is not a department  
it's an attitude.**





**LENTINK**

**PROUD TO BE PREFERRED SUPPLIER**



**THANK  
YOU**

<https://www.lentink.nl/nl>